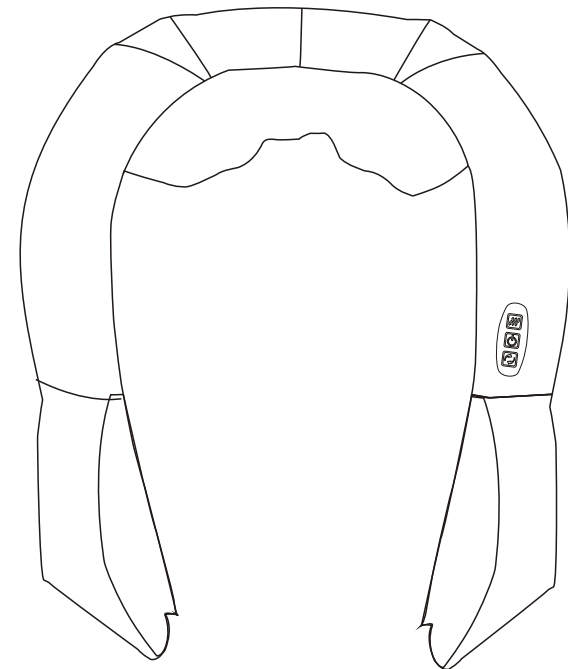


SL-D180 Neck And Shoulder Warm Massager
OPERATION INSTRUCTIONS

SAVE THESE INSTRUCTIONS



Thanks for purchasing this product. Please read this manual instruction carefully in order to know how to use this product correctly before operation. Please pay more attention to some important safety warning and keep this manual book properly for future use.

Note: Our Company reserves the right to revise the design and description of this product without any further notice. Please refer to the actual color of this product.

CONTENTS

Safety and maintenance issues	02
Product features	04
Method and function of buttons	05
Product parts and methods of use	06
Cleaning and maintenance	06
Troubleshooting	07
Method of use	08

Safety and maintenance issues

1. IMPORTANT SAFETY WARNING



- Do not allow any foreign matter to enter the clearance between the massage head and the casing
- Do not allow the product to come into contact with water so as to avoid any possible accidents that may result from a short circuit.
- If the mains cable or plug is damaged, do not disassemble and attempt to repair it by yourself. Please contact your distributor.
- Ensure that the mains power is suitable for this product.
- Please disconnect the product from the mains supply after use or before cleaning to avoid damage to the equipment or personal injury.
- Please use this product according to this Manual.
- Do not use any spare parts and attachments other than those recommended.
- Do not use this product if its casing or mains cable is damaged.
- Do not use this product if you are under the influence of alcohol or feeling unwell.
- Do not use this product with too much force so as to avoid injury.
- Do not keep this product on for more than 15 minutes so as to avoid overheating.
- Do not use this product within one hour of eating.
- Please use this product carefully according to your doctor's advice if you have a neck or back injury or if you have had an operation recently.

2. WORKING ENVIRONMENT

- Do not use this product in a highly humid environment such as a bathroom.
- Do not use this product immediately after there has been a sharp change in the environmental temperature.
- Do not use this product in an environment where there are lots of dust or corrosive gases.
- Do not use this product when it is covered by a blanket or pillow, etc.

3. PEOPLE THAT SHOULD NOT USE THIS PRODUCT

- People with contagious skin conditions
- Patients with osteoporosis
- Patients with heart diseases and with electronic medical instruments like a heart pacemaker
- People in a high fever
- Women that are pregnant or menstruating
- Those who are injured or suffering from any body surface disease
- The appliance has a heated surface. Persons insensitive to heat must be careful when using the appliance.
- Children under 14-year old or people mentally unbalanced without being Supervised are not allowed to use this machine.
- Those who to need rest according to a doctor's advice or those who do not feel well
- Do not use this product when you are wet
- Do not use this product on a pet.

4. SAFETY PRECAUTIONS

- Do not plug or unplug this product when your hands are wet
- Do not pull the cable when unplugging. Do not plug or unplug carelessly.
- This appliance is not intended for use by persons (including children) with reduced physical, sensory or mental capabilities, or lack of experience and knowledge, unless they have been given supervision or instruction concerning use of the appliance by a person responsible for their safety.

Safety and maintenance issues

- Children should be supervised to ensure that they do not play with the appliance.
- Do not damage the cable or change the circuit of the product.
- Please cease using this product in case of a power cut in order to avoid any body injury upon sudden power resumption.
- Please stop using this product and consult your local supplier if you notice anything abnormal with the product during use.
- Please stop using this product and consult your doctor for advice
- If the supply cord is damaged, it must be replaced by the manufacturer, its service agent or similarly qualified persons in order to avoid a hazard.
- The appliance has a heated surface. Persons insensitive to heat must be careful when using the appliance.
- Please do not pull controller connecting line, in cause that power cord fracture or plug with bad contact. When pulling out power plug, Please Hold the plug pulled back, rather than directly draw the power cord.
- When the whole machine does not working, please immediately stop using it to pull out power plug.
- This product is prohibited in the following locations: Bathroom and kitchen high temperature lights, damp, high voltage and the source of fire and water.
- Far away from sharp objects, the machine can't be used when its enclosure was damaged.
- Do not force it with fierce pressure or put body pressure on the massage mat. Don't touch with hard objects; don't weigh or tread it.

Product features



- ◎ the new concept of kneading massage, match the human body engineering design of the neck and the shoulder.
- ◎ the massage head is specially designed according to the neck and shoulder to give you the most comfortable experience.
- ◎ U shaped, arm in arm design, strong or gentle type, strength is decided by ourselves.
- ◎ clockwise and anti-clockwise kneading automatic conversion system.
- ◎ kneading direction manually choose function.
- ◎ warm function control separately, promote the blood circulation effectively.
- ◎ Switch operation is very simple.
- ◎ Polyurethane High-grade material holster
- ◎ Using the safety of the overheating protection device

Method and function of buttons

HT (Heater)



you can choose to stop heating function when it is working, press onetime, stop heating function, press again, heating function work again

ON/OFF

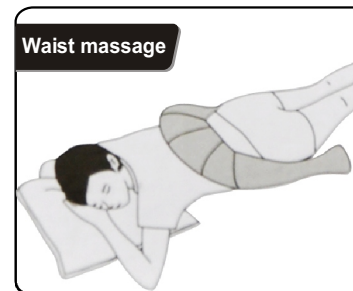


ON or OFF
Set the rated working time for 20 minutes
Start after 20 minutes automatically stop operation

DR (Direction)



can change the rotation direction in the start.
Can use in a particular place
massage in a specific direction.

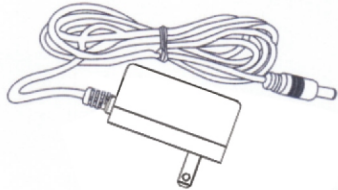


Product parts and methods of use

Power

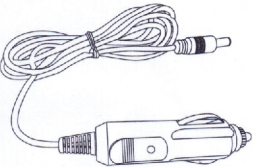
Input:100-240vac 50/60hz 1.6a
Output:dc 12v

Method of use:(1)the power insert into the massage
(2)The power plug insert into the socket



car charger

Method of use: Car charger socket outlet ends respectively connected to the massager and vehicle socket outlet.



Cleaning and maintenance

1. after using products, must pull the plug, then cool to stay safe before you start cleaning
2. After using, please use wet cloth clean up dust and dirt on the product.
3. Please do not use corrosive cleaner, such as benzene or thinner to clean this product.
4. Please do not use wet cloth clean control panel, lest cause failure, can only use dry cloth to wipe the control panel
5. Products when not in use for a long time, please wipe clean, load cases, placed in ventilated and dry place, in order to avoid the product be affected with damp and affect use.

Troubleshooting


- This chapter sums up the most frequently encountered problems in using this product
- If you have problems not mentioned in the list, you should try the following steps.
- Turning off the power of the product, unplug the power plug from the socket
- Keep this product closed 60 minutes.
- Insert the plug into the power socket and open the switch.
- If the problem persists, please contact our customer service center.

the fault	the reason	management
The product can't work.	the socket is unplugged.	plug the socket safely
	Power button is not open	open the power
	This product has just finished massage 20 minutes and automatically switch machine to stay mode	NO/OFF。 If you want to massage again, please click NO/OFF again.
	Products placed on the over-load (for example, someone standing on the products, or have a weight placed on top of the product).	Unplug the product power plug, remove the excess weight. Please insert product power and will be open again.
product heat The power supply cord damaged, the product smoke	You already make the product more groups of massage 20 minutes. Cool	Remove the power plug and let its cooling products, after use unplug the power plug of the product Stop using immediately and contact the seller.
The thermostat heating disconnect protection	Internal explosion	

Method of use

Model:SL-D180

Name:Neck and shoulder warm massager

Ated voltage:12V 

Rated power:24W

Rated working time:15minutes

Product safeguard construction: 