

Parameters

Electric Parameters (from HDL-MPPI.48):	
BUS Power Supply	DC12-30V
BUS Power consumption (from HDL-MPPI.48)	15mA/DC24V
Environmental Conditions:	
Working Temperature	-5°C~45°C
Working relative Humidity	Up to 90%
Storage Temperature	-20°C~+60°C
Storage relative Humidity	Up to 93%
Approved	
CE	
RoHS	
Production Information:	
Dimensions	86×86×10.5 (mm)
Weight	MP4A.48: 184.5(g)
	MP8A.48: 176(g)
Housing material	Glass, ABS
Installation	EU wall box
Protection	IP20

Important Notes

- It must work in conjunction with HDL-MPPI.48 (be installed in wall-box)
- User can replace the plate of different material and color.
- IR Control — Need to customize the plate with IR receiver hole
- Bus cable — HDL Buspro/KNX cable, 0.8mm single-core copper cable.
- Bus Connection — Series connection (hand-in-hand).
- Installation — EU wall box.

Installation Step

- Connect bus cables. Make sure the color of wire complies with the definition.
- Make sure the Bus cable type is correct and has no short circuit.
- Mount the HDL-MPPI.48 in the wall-box.
- Put this device into HDL-MPPI.48.

Safety attention



- The screw down strength should not exceed 0.1Nm.
- Mounting position: indoor.
- Do not make wrong connection on Bus interface, it will damage the Bus interface of this module.
- Never let liquids get into the module, it will damage this device.
- Do not get AC power into Bus wire, it will damage all devices in the system.

Overview



HDL-MP4A.48



HDL-MP8A.48

Multi-function panel, button labels, plate material and color are easy to replace.

Functions

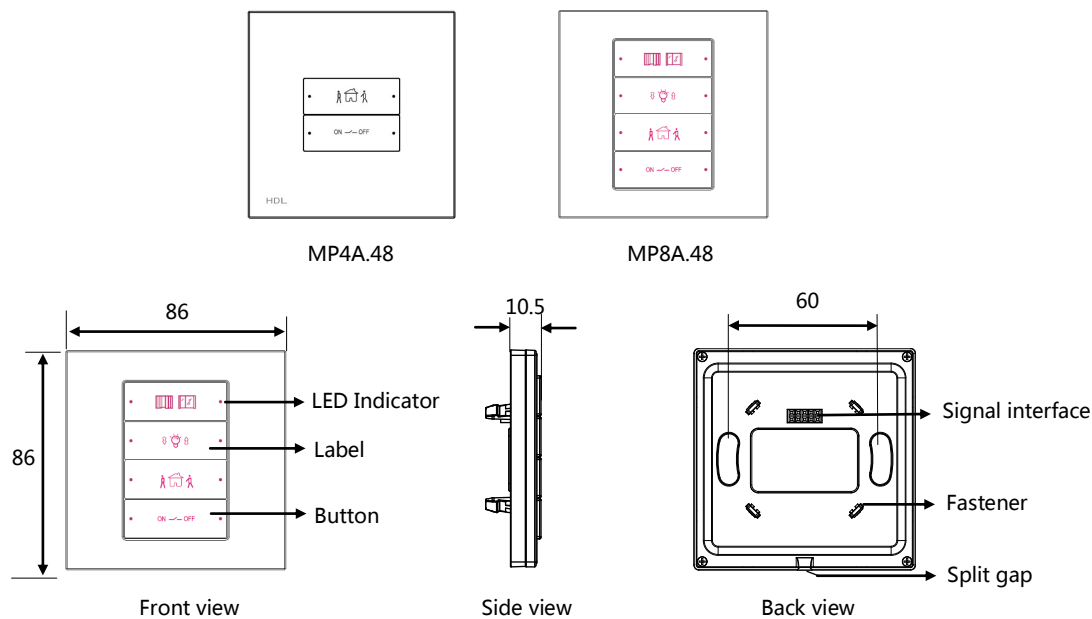
- **MP4A.48:** has 2 big buttons, a total of 4 control buttons.
- **MP8A.48:** has 4 big buttons, a total of 8 control buttons.
- Key Mode: Single on/off, Single on, Single off, Combination on, Combination off, Combination on/off, Double click single on/off, Double click combination on/off, Inching, Short/long press, Short press/long inching.
- Key Control Type: Scene, Sequence, Timer, Universal Switch, Single Channel Control, Broadcast Scene, Broadcast Channel, Curtain Control, GPRS Control, Panel Control, Security Module, Music Play, Universal control, etc.
- Button Lock, mutually exclusive function.
- Built-in IR receiver, need to replace a plate with an IR receiving hole to enable the IR remote control function.
- IR remote control function.
- Customized Button labels, replaceable the plate.
- Key LED status is adjustable.
- Supports HDL Buspro online upgrading.

HDL Buspro Definition for Cable

HDL Buspro	HDL Buspro/KNX
DC24V	Red
COM	Black
DATA-	White
DATA+	Yellow



Dimensions and Wiring



Button Label will be subject to the actual product.

Push Button: On/off, dimming.

Button Indicator: Indicates the status of the controlled target. On–Status on; Off–Status off. User can define the color of status.

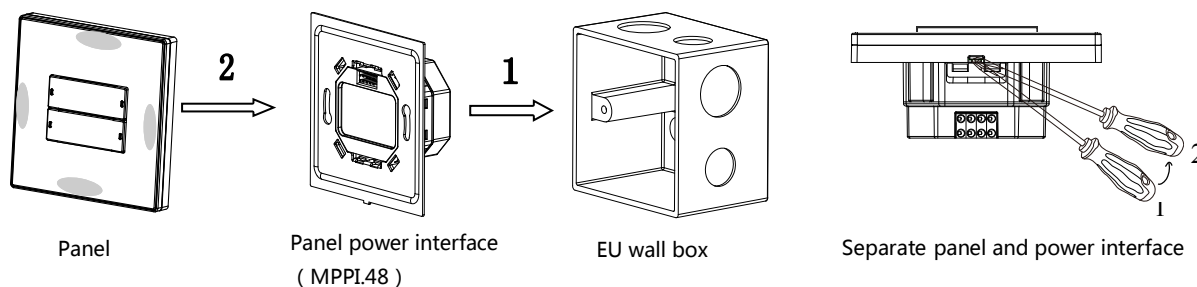
Address Modification: Keep pressing any button for about 15S, and then all LED indicators will flash together, use HDL-Bus pro Set up software to modify the address by step “Address Management > Address Modification”, then press any button will exit program mode.

Panel Unlock: After the button is locked, press the first button and the last button for about 2S.

Signal interface and fastener: Connect to panel power interface (MPPI.48).

Split gap: Insert a slotted screwdriver to the split gap, separate the panel and power module (MPPI.48).

Installation



Installation: Hold the edge of the panel (shown as above), insert the power interface module vertically. Do not push the panel too hard.

Split : Insert a 2.5mm-screwdriver to the split gap, pry up from Position 1 to 2, then the wiring hole will open. Then separate the panel and MPPI.48.