



HELMET
WWW.HELMET-CO.KR

Box Camera

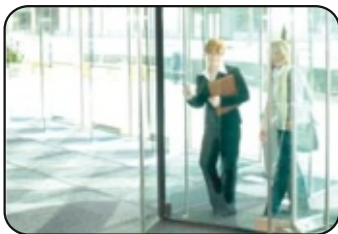
HCC-327BN



**Box Camera 1/3" Sony Color Vertical Double Density CCD,
High Resolution 600 TVL, Super WDR(Wide Dynamic Range),
3D-DNR & Sense-Up(x512), TDN Filter, OSD, Eclipse W/O
Lens, C/CS Mountable, DC 12V**



NORMAL



BLC



WDR

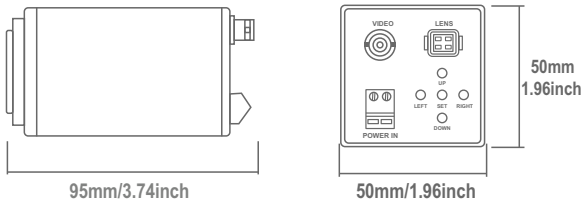
Specifications

TV SYSTEM	NTSC	PAL
Image pick-up Device	Sony 1/3" Color Vertical Double Density CCD	
Number of Pixels	H 768 V 494	758 582
Scanning Frequency	H 15.734KHz V 59.94Hz	15.625KHz 50Hz
Horizontal Resolution	Color : 600TV Lines B/W : 700TV Lines	
S/N Ratio	More Than 52dB	
Min. Sensitivity	0.001 Lux (at Sens-up) X512	
WDR	Dual Scan WDR	
3D-DNR	Built-in	
Scanning System	2:1 Interface	
Gamma Correction	0.45 Approx	
Gain Control	Automatic	
Video Output	Composite Video 1.0Vp-p/75Ω	
Lens	C/CS Mount	
Power Source	DC 12V 300mA	
Power Sonsumption	3.0 Watt	
Operating Temp	-10℃ ~ +50℃	
Dimensions(mm)	50(W) x 50(H) x 95(D)	
Weight(g)	220g	



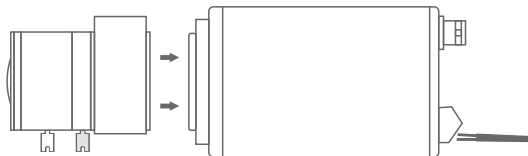
Dimensions

Part name & Dimension



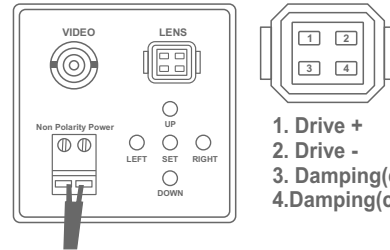
Installation

Step.1



Combine lens into camera body when use

Step.2



1. Drive +
2. Drive -
3. Damping(control)-
4. Damping(control)+

Connect each cable into the pertinent socket And configure a camera by using OSD buttons

Setup Menu Flow

