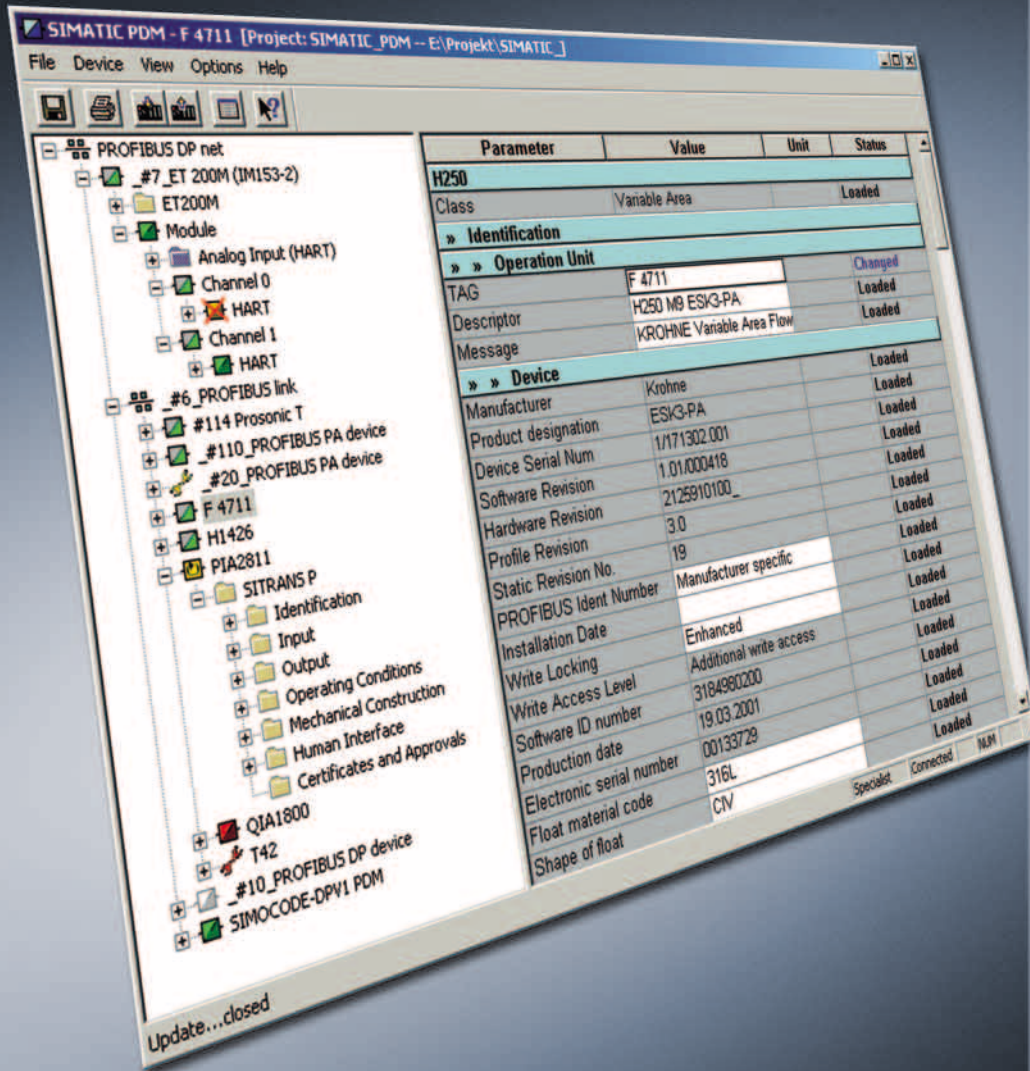


SIMATIC PDM – the Process Device Manager

Device list



The simple yet convenient SIMATIC PDM (Process Device Manager) permits you to utilize the full potential of your devices:

- You can increase the availability and performance of the devices, and optimize your processes
- You can recognize potential problems at an early point in time, and can react immediately
- You can use the device intelligence for plant-level asset management
- You can simplify and accelerate commissioning, diagnostics, asset management and servicing.

With respect to device integration, SIMATIC PDM is already the most powerful tool of this kind on the global market.

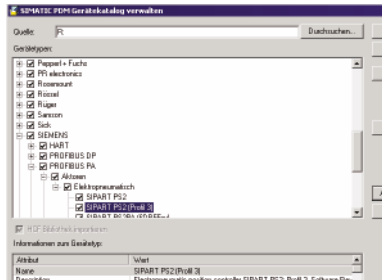
The current device catalog for SIMATIC PDM comprises more than 1,200 devices from over 100 vendors worldwide. This overview provides you with a representative cross-section of this range of devices.

simatic

SOFTWARE

SIEMENS

SIMATIC PDM – the Process Device Manager with the most comprehensive range of devices



SIMATIC PDM is a universal, multi-vendor tool for configuration, parameterization, commissioning, diagnostics and maintenance of intelligent field devices (sensors and actuators) and field components (remote I/Os, multiple-

xers, control room equipment, compact controllers) which are simply referred to below as devices.

The SIMATIC PDM software permits processing of more than 1,200 device types from Siemens and over 100 vendors worldwide using a homogeneous HMI. The display of the device parameters and functions is uniform for all supported devices, and independent of their communication interface.

In the context of device integration, SIMATIC PDM is the most powerful process device manager worldwide. The incorporation of new devices does not require a setup, but is carried out using simple file transfer (import function). This is based on a text description for the device which is generated by the vendor using the EDDL (Electronic Device Description Language) of the PNO (PROFIBUS International) or the DDL (Device Description Language) of the HCF (HART Communication Foundation).

Integration of the field devices is preferably carried out using the EDD (Electronic Device Description). The EDD is a text description of the device, is completely independent of the operating system of the engineering system, and decouples the life cycles of the field devices from the plants, automation systems and operating systems.

SIMATIC PDM offers numerous possibilities for communication with field devices:

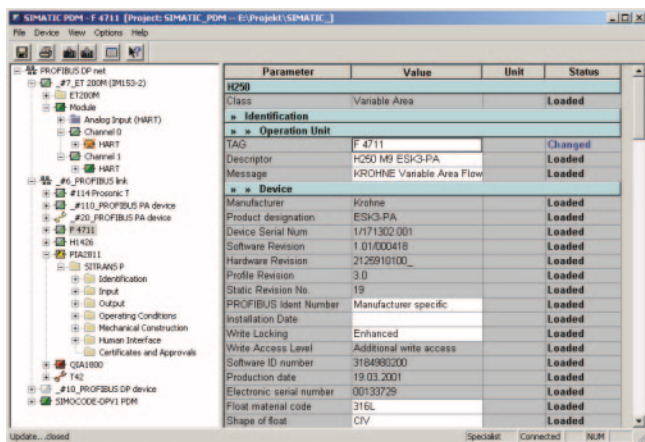
- Routing via Ethernet (only SIMATIC S7 / PCS 7)
- PROFIBUS DP / PA
- HART modem
- HART multiplexer
- Modbus
- SIREC network
- Further communications possibilities on request

The device descriptions delivered with SIMATIC PDM are integrated either by Siemens, by the respective vendor, or by the device catalog of the HCF. In addition, vendors provide further device descriptions (EDDs) with their products, or make them available on the Internet.

The range of SIMATIC PDM devices is periodically updated. In addition, new and updated device descriptions are permanently available from the Download Center on the SIMATIC PDM presentation on the Internet:

www.siemens.com/simaticpdm

If you cannot find devices in the SIMATIC PDM catalog which you would like to use, we would be pleased to help you to integrate them.



SIMATIC PDM parameter view

Contact addresses

Siemens AG, Automation and Drives, Technical Support

Europe

Tel.: +49 180 50 50 222

Fax: +49 180 50 50 223

E-Mail: adsupport@siemens.com

Asia/Pacific

Tel.: +86 1064 719 990

Fax: +86 1064 747 474

E-Mail: adsupport.asia@siemens.com

North and South America

Tel.: +1 423 262 2522

Fax: +1 423 262 2289

E-Mail: simatic.hotline@sea.siemens.com

Device list

Siemens field devices



SIEMENS PROFIBUS PA

CALOMAT 6, OXYMAT 6	Gas analysis
SIPAN32 Doppel-pH	Liquid analysis
SIPAN32 Einfach-pH	Liquid analysis
SIPAN32 Leitfähigkeit	Liquid analysis
SIPAN32_O2	Liquid analysis
SIPART PS2	Positioner
SITRANS F	Flow - ultrasonic
SITRANS F C MASS 6000 (Profil 2)	Flow - Coriolis
SITRANS F M MAG 6000 (Profil 2)	Flow electromagnetic
SITRANS F M InterMag 2	Flow electromagnetic
SITRANS F M TransMag 2	Flow electromagnetic
SITRANS LR	Level - echo
SITRANS P	Pressure
SITRANS P DSIII	Pressure
SITRANS P300	Pressure
SITRANS T3K	Temperature
ULTRAMAT 23 (1 IR)	Gas analysis
ULTRAMAT 23 (1 IR, O2)	Gas analysis
ULTRAMAT 23 (2 IR)	Gas analysis
ULTRAMAT 23 (2 IR, O2)	Gas analysis
ULTRAMAT 23 (3 IR)	Gas analysis
ULTRAMAT 23 (3 IR, O2)	Gas analysis
ULTRAMAT 6 (1 IR)	Gas analysis
ULTRAMAT 6 (2 IR)	Gas analysis
Siemens Milltronics	
Pointek CLS	Level - capacitive
SITRANS LC	Level - capacitive
SITRANS LR 200 / LR 300 / LR 400	Level - echo
SITRANS LS	Level - capacitive

SIEMENS PROFIBUS DP

CALOMAT 6	Gas analysis
ET 200iS, ET 200iSP, ET 200M	Remote I/O
MICROMASTER 4	Frequency converter
OXYMAT 6	Gas analysis
SIMOCODE, SIMOCODE pro	Switching device
SIPART DR19	Controller
SIPART DR1900	Controller
SIPART DR19P	Controller
SIPART DR20	Controller
SIPART DR21	Controller
SIPART DR22	Controller
SIPART DR2210	Controller
SITRANS DA	Acoustics
SITRANS F C MASS 6000 (Profil 2)	Flow - Coriolis
SITRANS F M MAG 6000 (Profil 2)	Flow electromagnetic
ULTRAMAT 23 (1 IR)	Gas analysis
ULTRAMAT 23 (1 IR, O2)	Gas analysis
ULTRAMAT 23 (2 IR)	Gas analysis
ULTRAMAT 23 (2 IR, O2)	Gas analysis
ULTRAMAT 23 (3 IR)	Gas analysis
ULTRAMAT 23 (3 IR, O2)	Gas analysis
ULTRAMAT 6 (1 IR)	Gas analysis
ULTRAMAT 6 (2 IR)	Gas analysis

SIEMENS HART / EDD

SIPAN LF, SIPAN pH	Liquid analysis
SIPART PS2	Positioner
SITRANS F	Flow - ultrasonic
SITRANS F M InterMag 2	Flow electromagnetic
SITRANS F M TransMag 2	Flow electromagnetic
SITRANS F M MAGFLO	Flow electromagnetic
SITRANS LR	Level - echo
SITRANS P300	Pressure
SITRANS P DSIII, SITRANS P DSIII.2	Pressure
SITRANS P ES, SITRANS P HS	Pressure
SITRANS P MS	Pressure
SITRANS P-DS	Pressure
SITRANS TK-H, SITRANS TW	Temperature
Siemens Milltronics	
SITRANS LR 200 / LR 300 / LR 400	Level - echo
SITRANS Probe LR	Level - echo
SITRANS Probe LU 6m	Level - echo
SITRANS Probe LU 12m	Level - echo

SIEMENS MODBUS

Siemens Milltronics	
HydroRanger 200	Level - echo
MultiRanger 100, MultiRanger 200	Level - echo

SIEMENS SIPART DR

SIPART DR19, DR1900, DR19P	Controller
SIPART DR20, DR21, DR22	Controller
SIPART DR2210	Controller

SIEMENS SIREC

SIREC L/LA	Process recorder
SIREC P/PA	Process recorder
SIREC PU	Process recorder
SIREC VARIOGRAPH	Process recorder



Device list

PROFIBUS PA communication



	PROFIBUS PA communication	
ABB	2600T-263/265	Pressure
	600T Pressure	Temperature
	FSM4000, FV4000_FS4000, FXE4000	Flow
	TZID-F	Positioner
	ES	Flow - float
Bopp & Reuther Heinrichs	UMC2	Flow - Coriolis
	8635	Positioner
Bürkert	8642	Discrete output
	MAG6000	Flow electromagnetic
Danfoss	MASS6000	Flow - Coriolis
	Endress+Hauser	Cerabar M, Cerabar S, Deltabar S
Deltapilot S		Level - hydrostatic
	Levelflex M	Level - echo
	Liquiphant M	Discrete input
	Liquisys M CCM 2x3, CLM 2x3-C, CLM 2x3-I, COM 2x3, CPM 2x3, CUM 2x3	Liquid analysis
	Micropilot II, Micropilot M	Level - echo
	Mypro CLM 431-C, Mypro CLM/CLD 431-I, Mypro CPM 431	Liquid analysis
	Promag 33/35, 50, 53	Flow electromagnetic
	Promass 63, 80, 83	Flow - Coriolis
	Prosonic Flow 90, 93	Flow - ultrasonic
	Prosonic M, Prosonic T	Level - echo
	Prowirl 77	Flow - vortex
	Smartec S CLD 132	Liquid analysis
	TMD 834	Temperature
	TMT 184	Temperature
Foxboro Eckardt	144LD	Level - hydrostatic
	SRD960	Positioner
	SRD991	Positioner
Inor	ProfIPAQ	Temperature
Invensys	RTT 15-F	Temperature
Knick	Stratos 2221 X Cond, Stratos 2221 X Oxy, Stratos 2221 X pH, Stratos 2222 X CondI	Liquid analysis
KROHNE	BM100A, BM70 A/P	Level - echo
	H250	Flow - float
	IFC 090	Flow electromagnetic
	MFC 081, MFC 085	Flow - Coriolis
Labom	Pascal_CV	Pressure
Lang	LMIT 08	Liquid analysis
Metso Automation	ND800PA	Positioner

	PROFIBUS PA communication		
Mettler Toledo	Cond 7100 PA	Liquid analysis	
	O2 4100 PA	Liquid analysis	
	pH 2100 PA	Liquid analysis	
Pepperl+Fuchs	FD0-VC-Ex4.PA	Discrete output	
	RSD-GW-EX1.PA	Remote I/O	
PR electronics	Pretop 5350, Pretop 6350	Temperature	
PROFIBUS PA profile 2.0	Pressure	Pressure	
	Flow-Coriolis	Flow - Coriolis	
	Flow electromagnetic	Flow electromagnetic	
	Flow- vortex	Flow - vortex	
	Positioner	Positioner	
	Temperature	Temperature	
	Discrete input	Discrete input	
PROFIBUS P profile 3.0	Discrete output	Discrete output	
	Pressure	Pressure	
	Flow Coriolis	Flow - Coriolis	
	Flow electromagnetic	Flow electromagnetic	
	Flow Vortex	Flow - vortex	
	Liquid analysis	Liquid analysis	
	Level - echo	Level - echo	
	Level - hydrostatic	Level - hydrostatic	
	Level - capacitive	Level - capacitive	
	Gas analysis	Gas analysis	
	Temperature	Temperature	
	Rosemount	3051	Pressure
		3244MVM	Temperature
SAMSON AG	3785	Positioner	
SICK	GM 901	Gas analysis	
SMAR	DT303	Pressure	
	FI303, FP303	Converter	
	FY303	Positioner	
	IF303	Converter	
	LD293, LD303	Pressure	
	TP303	Positioner	
	TT303	Temperature	
	VEGA	D90-Series	Level - hydrostatic
	VEGABAR	Pressure	
	VEGACAP	Level - capacitive	
	VEGAFLEX 50, VEGAPULS Serie 40, VEGAPULS Serie 50, VEGASON 50	Level - echo	
WIKA	WIKA T42	Temperature	
YOKOGAWA	EXA ISC 202, EXA PH 202, EXA SC 202	Liquid analysis	

Device list

PROFIBUS DP communication

HART communication / EDD / multiplexer



	PROFIBUS DP communication	
AUMA	AUMA actuators with Matic/Variomatic	Positioner
CEAG	FB 8203, FB 8205, LB 8103, LB 8105	Remote I/O
Endress+Hauser	Cerabar S	Pressure
	Liquisys M CCM 2x3, CLM 2x3-C, CLM 2x3-I, COM 2x3, CPM 2x3, CUM 2x3	Liquid analysis
	Promag 33/35, Promag 53	Flow electromagnetic
	Promass 63, Promass 83	Flow - Coriolis
	Prosonic Flow 93	Flow - ultrasonic
	Smartec S CLD 132	Liquid analysis
FRAMATOME ANP	AV42_0	Switching device
Lang	LMIT 08	Liquid analysis
PROFIBUS profile	Profile for hydraulic positioners	Positioner
	Profile for semiconductors	Semiconductor
SIPOS	SIPOS5	Positioner

	HART communication / EDD	
M-System	B3HU	Temperature
Rössel Messtechnik	RT - RH	Temperature
Rosemount	644	Temperature
	3051C	Pressure
Rueger SA	S95 HRT	Temperature
SAMSON AG	3780	Positioner
TURBO-WERK	TIMAG	Flow electromagnetic
VEGA	D-Series	Level - hydrostatic
	VEGABAR	Pressure
	VEGACAL 60, VEGACAP	Level - capacitive
	VEGADIF	Pressure
	VEGAFLEX 50, VEGAPULS Serie 40, VEGAPULS Serie 50, VEGASON 50	Level - echo
WIKA	WIKA T32	Temperature

HART communication / HARTmultiplexer

	HART communication / HART multiplexer	
Arcom	Arcom H-Port	multiplexer
MTL	4841, 8512	multiplexer
Pepperl+Fuchs	KFD2, KFD"-HHM-16, HPSM, MUX2700	multiplexer
R. STAHL	I.S.1, ICS module 9148	multiplexer

HART communication / EDD

Device integration using HART communication and EDD: an international standard - open to all

	HART communication / EDD	
ABB	600T	Pressure
	FSM4000	Flow
Berthold	LB 490	Level
	LB 491	Flow - radiometric
Bopp & Reuther Heinrichs	ES	Flow - float
	UMC2	Flow - Coriolis
	UST	Flow - float
Endress+Hauser	Cerabar M	Pressure
	Deltabar S	Pressure
	Micropilot II	Level - echo
	Promag 33/35	Flow electromagnetic
	Prowirl 70, Prowirl 77	Flow - vortex
	TMD 832, TMT 122, TMT 182	Temperature
Foxboro Eckardt	SRD960, SRD991	Positioner
HCF	Universal	Universal
Inor	Meso	Temperature
Kamstrup	FlexTop HRT	Temperature
Knick	2211PH	Liquid analysis
KROHNE	BM70 A/P /700 /702	Level - echo
	H250 ESK II	Flow - float
Labom	Pascal CI	Pressure

Object name	Description	Message	Device status	Communication
#114 Prosonic T	Not validated	Good 15
4711	Not validated	Good 15
#110_PROFIBUS	Not validated	Good 15
#110_PROFIBUS	Not validated	Good 15
#20_PROFIBUS	maintenance recomme...	Good 15
#50_SIMOCODE...	Good	Good 15
H1426	Good	Good 15
PIA2811	Positioner	Siemens	Simulation or manual ...	Good 15
QIA1800	Analyzer	Message	Fault	Good 15
T42	maintenance required...	Good 15

SIMATIC PDM plant view

Device list

HART communication / HCF catalog



	HART communication / HCF	
ABB	2000T, 2600T - 262/264, 600T	Pressure
	652 / 653S, 658T, KST	Temperature
	KSX	Pressure
ACCUTECH	AI1500	Temperature
	VR - 1500	Pressure
American Level Instruments	Model 32E	Level - capacitive
Action Instruments	T798	Temperature
AMETEK	IQ Series	Gas analysis
APPARATEBAU Hundsbach	MT115	Temperature
ATI	D12	Analysis
BadgerMeter	Primo	Flow electromagnetic
Bailey Fischer & Porter	50SM1000	Flow electromagnetic
	50VM1000, 50VT1000	Flow - vortex
	50XE4000, 50XM1000, 50XM2000	Flow electromagnetic
	PTH	Pressure
	TB / ML 82 EC CONC, TB / ML 82 EC COND, TB / ML 82 PH IConc, TB / ML 82 ORP, TB / ML 82 pH, TB / ML 82 PH pION, TB / ML 82 TC CONC, TB / ML 82 TC COND, TB / ML 82 TE CONC, TB / ML 82 TE COND	Liquid analysis
BERTHOLD	LB460	Level - echo
	LB490	Density
	LB491	Level - radio
BESTA	CLS 4-20	Level - capacitive
Bopp & Reuther Heinrichs	DIMF	Density
	ES	Flow - float
	UMC2	Flow - Coriolis
	UST_01	Flow - float
	VTX	Flow - vortex
Brooks Instrument	38XXVA	Flow - float
	QUANTIM	Flow - Coriolis
	TRI20	Flow
Delta Weed	HT	Pressure
Detector Electronics	ECLIPSE OPECL_RX	Gas analysis
DEZURIK	Positioner	Positioner
DIRECT MEASUREMENT	DMC R-1A	Flow - Coriolis
DRAEGER	POLYTRON2, POLYTRON2_IR	Gas analysis
DREXELBROOK	UNIVERSAL III	Level
DYNISCO	IPX, IPXII	Pressure

	HART communication / HCF	
Endress+Hauser	AT70	Flow
	Cerabar M, CERABS / Cerabar S	Pressure
	DELTAPS/Deltapilot, DELTBS/Deltarbar S	Level - hydrostatic
	FEC12	Level - capacitive
	FMP200	Level
	FMP4x / Levelflex M, FMR130 /Micropilot	Level - echo
	FMR23X	Flow - ultrasonic
	FMR2xx, FMR53x	Level - echo
	FMU231 /Prosonic T, FMU4x / Prosonic M, FMU860, FMU861, FMU862	Flow - ultrasonic
	MyPro LFC, MyPro LFI, MyPro PH	Liquid analysis
	NMS530	Level
	NMT530	Temperature
	PROMAG 10, 23, 33, 35S, 39, 50, 51, 53	Flow electromagnetic
	PROMASS 40, 60, 63, 80, 83	Flow - Coriolis
	PROSON F, F90, F93	Flow - ultrasonic
PROWIRL 70, 73, 77	Flow - vortex	
TMD 832, 833, 842, TMT 122, 162, 182	Temperature	
FINT	PIR 2000	Gas analysis
FLOWERVE (VALTEK)	Kammer_C2100, Logix 12xx, Logix 500	Positioner
FCI Fluid Components Int.	ST98	Flow
FOXBORO	CFT30, CFT50	Flow - Coriolis
	I/A PRESSURE	Pressure
	IMT25	Flow electromagnetic
	ITVORTEX	Flow - vortex
	875PH	Liquid analysis
	IMV 25/30	Pressure
	RTT 15	Temperature
FOXBORO ECKARDT	DMU 130, DMU 140	Pressure
	TI/RTT20, TSV175	Temperature
FUJI	FCX-A/C, FCX-A2/C2	Pressure
	FRC	Temperature
GP50	MDL400	Pressure
Harold Beck & Sons	DCM, ESR-D	Positioner
Hartmann & Braun	AS800	Pressure
	TEU 211, TH02, TS 11	Temperature
	TZID, TZIDC	Positioner
HENGESBACH	TE52	Temperature
HONEYWELL	HWFLOW / Mage W Plus	Flow electromagnetic
	ST3000	Pressure
	STT25H, STT25T	Temperature
HUAKONG	HK_TT01	Temperature

Device list

HART communication / HCF catalog



	HART communication / HCF		
Inor	MESO	Temperature	
INTERCORR	SMARTCET	Corrosion Analyzer	
INVENSYS	I/A PRESSURE	Pressure	
J-Tec	SERIES 0	Flow	
Kamstrup	FlexBar 3051, FlexBar HRT	Pressure	
	FlexTop HRT	Temperature	
KAY-RAY SENSALL	3680	Density	
	4790/4160e HLT	Level	
	Accu-Pulse Pro	Level - laser	
KDG MOBREY	4301	Pressure	
	MLT100	Level - displacement	
	MRL700	Level - echo	
	MSP100	Level	
KLAY INSTRUMENTS	SERIES 2000	Pressure	
Knick	2211Cond, 2211CondI, 2211PH	Liquid analysis	
KROHNE	BM100, BM102, BM70	Level - echo	
	ESKII	Flow - float	
	IFC040, IFC080, IFC090, IFC110	Flow electromagnetic	
	MFC08x	Flow - Coriolis	
	UFC030, UFC500	Flow - ultrasonic	
	VFM31	Flow - vortex	
Labom	IPX	Pressure	
Lanlian Instruments	LSIII	Pressure	
MAGNETROL	MODEL 704, MODEL 705, MODEL 705 2.X, MODEL 707, MODEL 708, MODEL 805	Level	
	MODEL TA2	Flow - Coriolis	
	SMARTEZ, Jupiter, Model RX5	Level	
	MAGTECH	LTM-100	Level
	MASONEILAN	HDLT	Level
	SVI, SVII	Positioner	
Mettler Toledo	Cond 7100, pH 2100	Liquid analysis	
MICRO MOTION	MVD Series 1000, MVD Series 2000, IFT9701/03, RFT9712, RFT9739, MVD Series 1000 IS, MVD Series 2000 IS	Flow - Coriolis	
	MOORE INDUSTRIES	TRZ	Temperature
	Moore Products Co.	341	Pressure
		343, 344	Temperature
		345, 340 A, 340 A2, 340 B, 340 S	Pressure
760 D		Positioner	
M-SYSTEM	B3HU, B6U	Temperature	
MTS SYSTEMS	M Series	Level	
Neles Controls	ND820, ND820/T	Positioner	
OHMART Corporation	DSTH/LSTH, DSTH/LSTH COMP	Level	

	HART communication / HCF		
OVAL	EX-DELTA	Flow - Vortex	
	CT9401, EV9201, MT9431, ST9801	Flow - Coriolis	
	ULTRA OVAL	Flow	
PANAMETRICS	868 Series	Flow - ultrasonic	
Paper Machine Components	SMT-EL	Pressure	
PEEK MEASUREMENT	900 Densitometer	Density	
PHOENIX CONTACT	MCR-FL-HT-TS-I-EX	Temperature	
PMV	D3	Positioner	
PR electronics	Pretop 5335, Pretrans 5335	Temperature	
PRIME Measurement	330, 340, 343, 345		
PRINCO	L4610	Level - capacitive	
Pyromation Inc	SERIES442	Temperature	
Robertshaw	EXCALIBUR_7000	Level	
Rosemount	248, 644	Temperature	
	951, 1810, 2088, 2090	Pressure	
	3044, 3144	Temperature	
	3201, 3202	Level - hydrostatic	
	3244	Temperature	
	3300	Level - echo	
	4600	Pressure	
	8712	Flow electromagnetic	
	8800	Flow - vortex	
	1151s, 2088LP, 3001C, 3001S	Pressure	
	3044C	Temperature	
	3051C, 3051CLP	Pressure	
	3095C	Level	
	3095MV	Flow - Coriolis	
	8712D, 8712H, 8732D	Flow electromagnetic	
	APEX	Level	
	PROBAR, PROBAR_UC, ProPlate UC	Pressure	
	Tri-Loop	Converter	
	Rosemount Analytical	1181Cond, 1181pH, 2081 pH, 2081 Cond, 3081-81C, 3081-81T, 308-81cond, 3081FG, 3081-81pH, 3081pH	Liquid analysis
		5081FG, 5081A	Gas analysis
5081C/T, 5081pH, 54eA, 54eC, 54epH/ORP		Liquid analysis	
OCX-4400		Gas analysis	
OPM-2000R		Liquid analysis	
Oximitter4000, Oximitter4001, WC3000, Xmt-A		Gas analysis	
Xmt-pH		Liquid analysis	

Device list

HART communication / HCF catalog



	HART communication / HCF	
Rueger SA	S95 3U02 / S95 3U12, S95 HRT	Temperature
Saab Tank Control	TankRadarPro, 5600	Level - echo
SAMSON AG	3780, 373X-3	Positioner
SCHLUMBERGER	NEXGEN	Flow - Coriolis
Sick Maihak	FL600	Analysis
Siemens	SITRANS F M MAGFLO	Flow electromagnetic
	SIPART PS2	Positioner
	SITRANS F	Flow - ultrasonic
	SITRANS F M	Flow electromagnetic
	SITRANS LR	Level - echo
	SITRANS P DS/ES/HS/MS	Pressure
	SITRANS TK-H / TW	Temperature
Siemens Milltronics	MST2002, MST9500	Level - capacitive
SIPAX	SP301	
SMAR	DT301	Density
	FY301	Positioner
	LD301	Pressure
	TT301	Temperature
SMC	F793-E701	Positioner
SPARLING Instruments	F6XX	Flow electromagnetic
Spirano	SST70	Pressure
STATUS INSTRUMENTS	SEM300	Temperature
SYNETIX	PRI150	Level
Thermo Measure Tech	NCMi, NDMi	Density
	Accu-Wave	Level - echo
TOSHIBA	AP3100	Pressure
	LF220	Flow electromagnetic
TURBO	INTERMAG TRANSMAG	Flow electromagnetic
TURCK	KMU-HLI	Temperature
Tyco Valves & Controls	SmartCal	Positioner
VALMET	MCAi	Consistency
	PSMART	Pressure
	SMART LC, SMART LX, SMARTPULP	Consistency
VIATRAN	970, I/A Pressure	Pressure

	HART communication / HCF	
VORTEK	Innova-Mass	Flow - vortex
WEED	9100D, 9100H	Temperature
WELLTECH	WT2000	Pressure
Westlock Controls	DEPIC	
	ICOT, SmartCal	Positioner
WIKA	T32	Temperature
	UniTrans	Pressure
YAMATAKE	MAGNEW, MAGNEW2W	Flow electromagnetic
	ThermoPlus ATT	Temperature
	ST3000, PTG	Pressure
YOKOGAWA	SVP	Positioner
	ADMAG AE	Flow electromagnetic
	ADMAG SE, AM11, RCCT-F3	Flow
	RAMC	Flow - Coriolis
	DYF, YEWFLO	Flow - vortex
	EJA	Pressure
	ISC202, PH150, PH202	Liquid analysis
	ROTAMASS	Flow
	SC150, SC202	Liquid analysis
	UNICOM	Pressure
	AXFA11 AXFA14	Flow electromagnetic
	YT200, YTA, YTA70E	Temperature
	ZR202, ZR402	Gas analysis
AV550G		
DO502		
EJX-MV		

Siemens AG

Automation and Drives
 Industrial Automation Systems
 Postfach 48 48
 90327 NÜRNBERG
 GERMANY

www.siemens.com/simaticpdm

The information provided in this brochure contains descriptions or characteristics of performance which in case of actual use do not always apply as described or which may change as a result of further development of the products. An obligation to provide the respective characteristics shall only exist if expressly agreed in the terms of contract. Availability and technical specifications are subject to change without notice.

All product designations may be trademarks or product names of Siemens AG or supplier companies whose use by third parties for their own purposes could violate the rights of the owners.