



ADVANTAGE™
Hair Removal.
Speed and Results
Without Compromise.

LUTRONIC®

Speed and Results Without Compromise

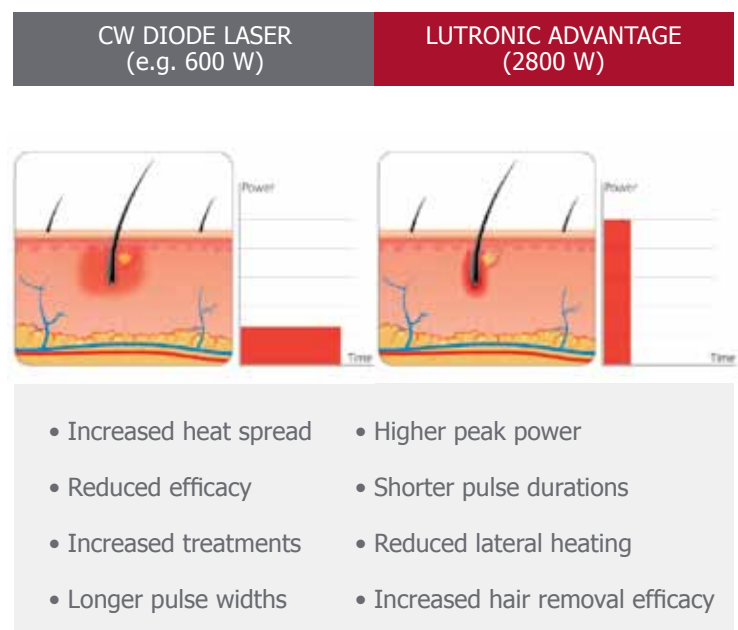


LUTRONIC ADVANTAGE is a re-engineered, high energy pulsed diode laser system for hair removal and permanent hair reduction. This is the first laser system to integrate adjustable pulse width control with a large spot chilled compression tip. Built with speed, efficacy and comfort as the foundation, the LUTRONIC ADVANTAGE is the cost-effective choice for a dependable laser hair removal system.

TREATMENT ADVANTAGE

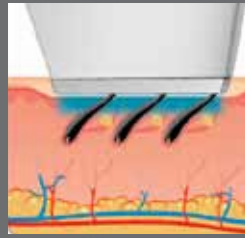
Your clinicians will appreciate the treatment speed of the ADVANTAGE system. Using a large spot size at a high repetition rate ensures rapid treatments. The ADVANTAGE is up to 40% faster than other systems on the market and can still deliver the promise of high efficacy. This enables your staff to complete treatment regimens quickly and efficiently.

- Reduce treatment times
- Gain staff efficiencies
- Provide a better patient experience
- Increase profits
- Treat the largest range of skin types
- No disposables, minimal consumable

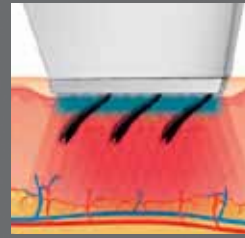


HOW IT WORKS

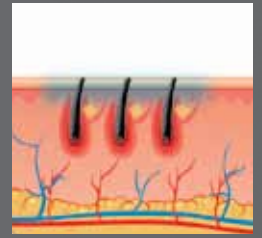
The chilled compression tip continually cools and compresses the epidermis before, during and after the treatment:



Effectively protects epidermis
Allows for increased fluences
Thins the treatment area
Temporarily displaces blood
Enhances patient comfort



Melanin in follicles absorbs light energy and is converted to thermal energy



Effectively destroys hair follicles, stem cells and dermal papillae

OPTIMIZED HAIR REMOVAL

ADVANTAGE provides the flexibility to reduce pulse widths while delivering higher fluences, your staff and patients can be assured their treatments will be highly effective. Your office should see immediate hair reduction and exceptional results after the treatment regimen.

- Adjustable pulse durations
- Enhances efficacy
- Faster results

“The ADVANTAGE provides optimal efficacy with reduced procedure time utilizing the larger spot size to not only reduce treatment time but also to penetrate deeply enough to maximize hair removal outcomes.”

ADVANTAGE allows users to adjust both the fluence and pulse widths to provide customized treatments according to the individual patient needs.”

Woo-Serk Koh, M.D.
Dermatologist
JMO Clinic, S. Korea

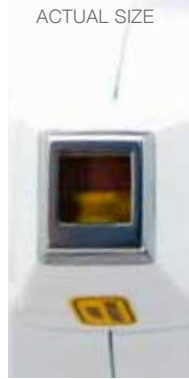


LUTRONIC®

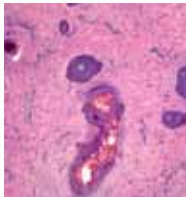
SYSTEM CONFIGURATIONS

Two interchangeable handpieces allow for multiple system configurations to meet your individual practice needs.

D1-800 HANDPIECE



10x10 mm spot size
Fluence up to 100 J/cm²
Chilled compression tip
Smaller spot treats smaller areas

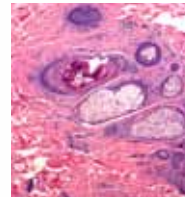


Complete disruption of hair and its follicle is seen, with the damage completely confined to the hair and follicle: no perifollicular damage is noted.

D3-800 HANDPIECE



10x30 mm spot size
Fluences up to 35 J/cm²
Chilled compression tip
Large spot treats larger areas



Complete disruption of hair and hair follicle can be seen, with some minor but limited perifollicular damage.

SPECIFICATIONS

Wavelength & Laser	805 nm Diode Laser	Comfort Management	Contact Cooling (3°C)
Pulse Widths	D1-800: 5 - 400 ms D3-800: 30 - 400 ms	Peak Power	2800 W Max
Handpiece & Spot Size	D1-800: 10 x 10 mm D3-800: 10 x 30 mm	Display	Touch Screen 8" LCD
Fluence	D1-800: 5 to 100 J/cm ² D3-800: 5 to 35 J/cm ²	Dimensions (Without Optional Cart)	409(W) x 592(L) x 464(H) mm 16.1(W) x 23.3(L) x 18.3(H) in
Repetition Rate	Up to 3 Hz	Weight	35 kg / 77 lbs

 THIS LASER PRODUCT COMPLIES WITH FEDERAL PERFORMANCE STANDARD 21 CFR. 1040.10 AND 1040.11 FOR CLASS IV LASER PRODUCTS

LUTRONIC, Inc. Locations

US Headquarters / R&D
 850 Auburn Court
 Fremont, CA 94538

East Coast Office
 Six Neshaminy Interplex, Suite 207
 Trevese, PA 19053

lutronic.com | 888-588-7644

LUTRONIC®