

TURK Hydraulics

	TO.H1*****Z02
Ordering Code	

Group 1



Pump displacement
4/6/8/10/12/14/16/18/20/23/25

1 *** *** Z02 B BB - F *

Inlet/Outlet combination
Refer to accessory 1

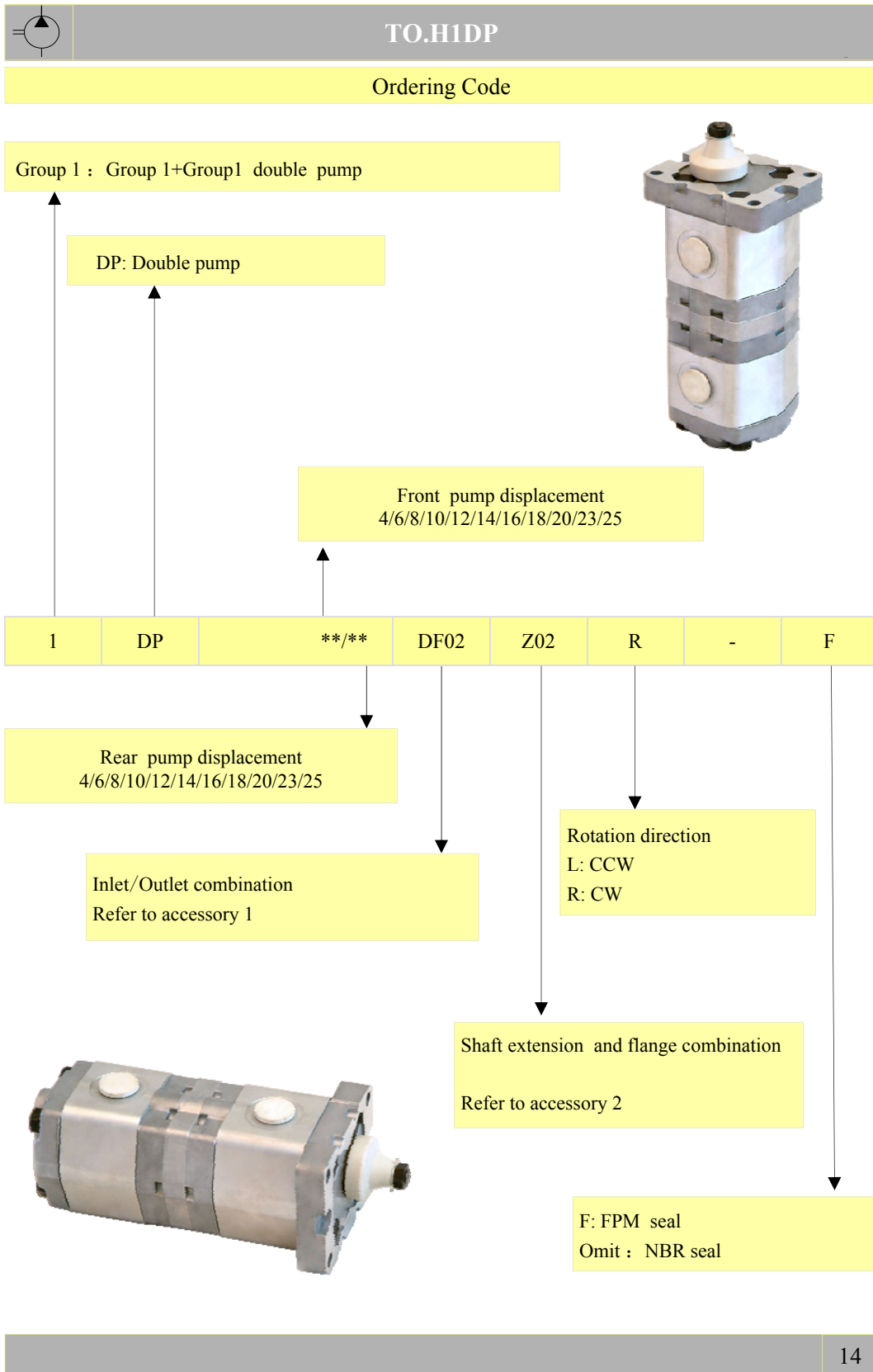
Rotation direction
B: Bi-directional
L: CCW
R: CW

Shaft extension and flange combination
Refer to accessory 2

Inlet/Outlet position combination
BB: Back inlet and back outlet
BS: Back inlet and side outlet
SB: Side inlet and back outlet
SS: Side inlet and side outlet

F: FPM seal
Omit : NBR seal

Valves option
Y: Relief valve
D: Check valve
(Omit : No valve (standard





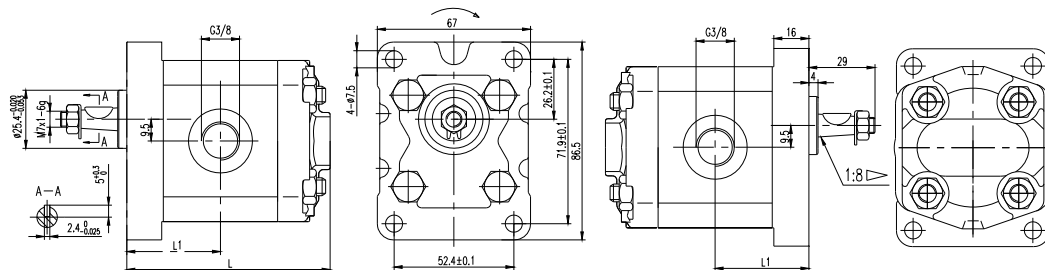
TO.H1*****Z02

Specifications

Model	Displacement (ml/r)	Pressure (bar)		Speed (r/min)			L (mm)	L1 (mm)
		Rated	Peak	Rated	Max	Min		
TO.H1 1.1 Z02 C027X	1.1	200	250	2000	6000	600	75	33
TO.H1 1.3 Z02 C030X	1.3	200	250	2000	6000	600	76	34
TO.H1 1.6 Z02 C036X	1.6	200	250	2000	6000	600	78	35
TO.H1 1.8 Z02	1.8	200	250	2000	6000	600	78.5	35.5
TO.H1 2.1 Z02 C048X	2.1	200	250	2000	6000	600	79	36
TO.H1 2.7 Z02 C060X	2.7	200	250	2000	6000	600	81	37
TO.H1 3.2 Z02 C072X	3.2	200	250	2000	5000	600	83	38
TO.H1 3.7 Z02	3.7	200	250	2000	4500	600	85	39
TO.H1 4.2 Z02 C096X	4.2	200	250	2000	4000	600	87	40
TO.H1 4.8 Z02	4.8	160	200	2000	3500	600	89	41
TO.H1 5.8 Z02 C0130X	5.8	160	200	2000	2900	600	93	43
TO.H1 8.0 Z02 C0180X	8.0	160	200	2000	2100	600	101	47

Dimension

TO.H1***L46Z02SS



TO.H1***F01Z02SS

