



» F7210

Quick Installation Guide

Zavio F7210 Quick Installation Guide

Please follow the installation steps below to set up your F7210 Box IP Camera.

Check the package contents against the list below. *See P.1*

Physical overview. *See P.1*

I/O Terminal Block Pin Definition. *See P.2*

I/O Terminal Block Circuit. *See P.3*

LED Indicator Definition. *See P.3*

Install the hardware and connect all cables. *See P.4*

Microsoft OS: Use the software CD to install Intelligent IP Installer. *See P.5*

Access the IP Camera using Intelligent IP Installer. *P.5*

Mac OS using Safari Browser. *P.7*

Change light environment setting. *P.7*

Change the Web Interface into your preferred language. *P.8*

Wireless Setting *P.8*

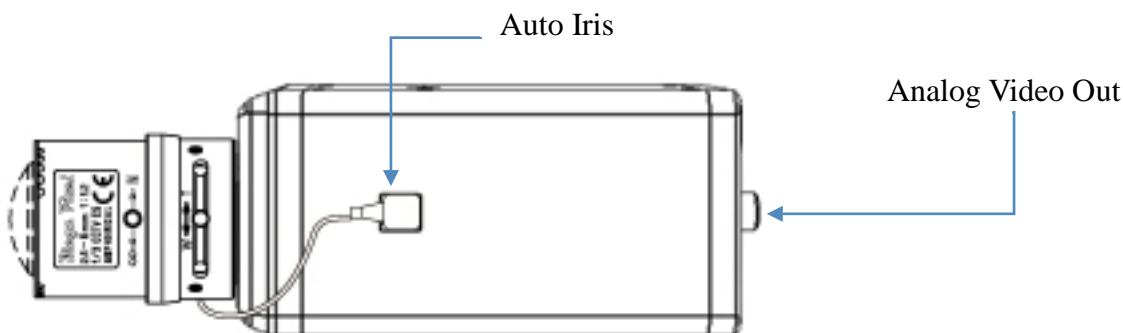
Application of IP Camera *P.9*

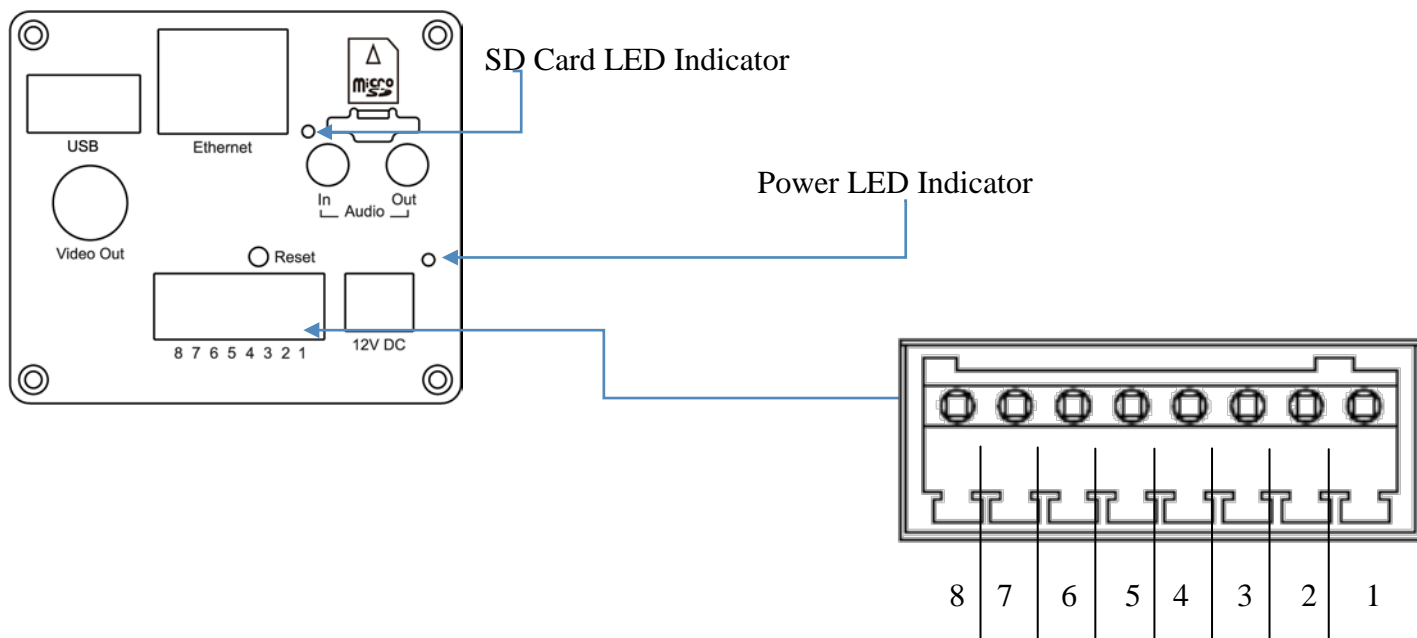
For more information, please check the User Manual available in the Software CD or you can download the latest software from <http://www.zavio.com>

Package Contents

Camera	F7210 IP Camera
Quick Installation Guide	Brief product information and quick installation
Software CD	IP Surveillance Software Intelligent IP Installer User Manual Language Packs
Mounting Bracket	Three screw, Lock ring, and one bracket
Accessory	BNC female to RCA male adapter 8 pin terminal block for DI/DO and RS-485
Adaptor	12V DC, max 12W

Physical overview



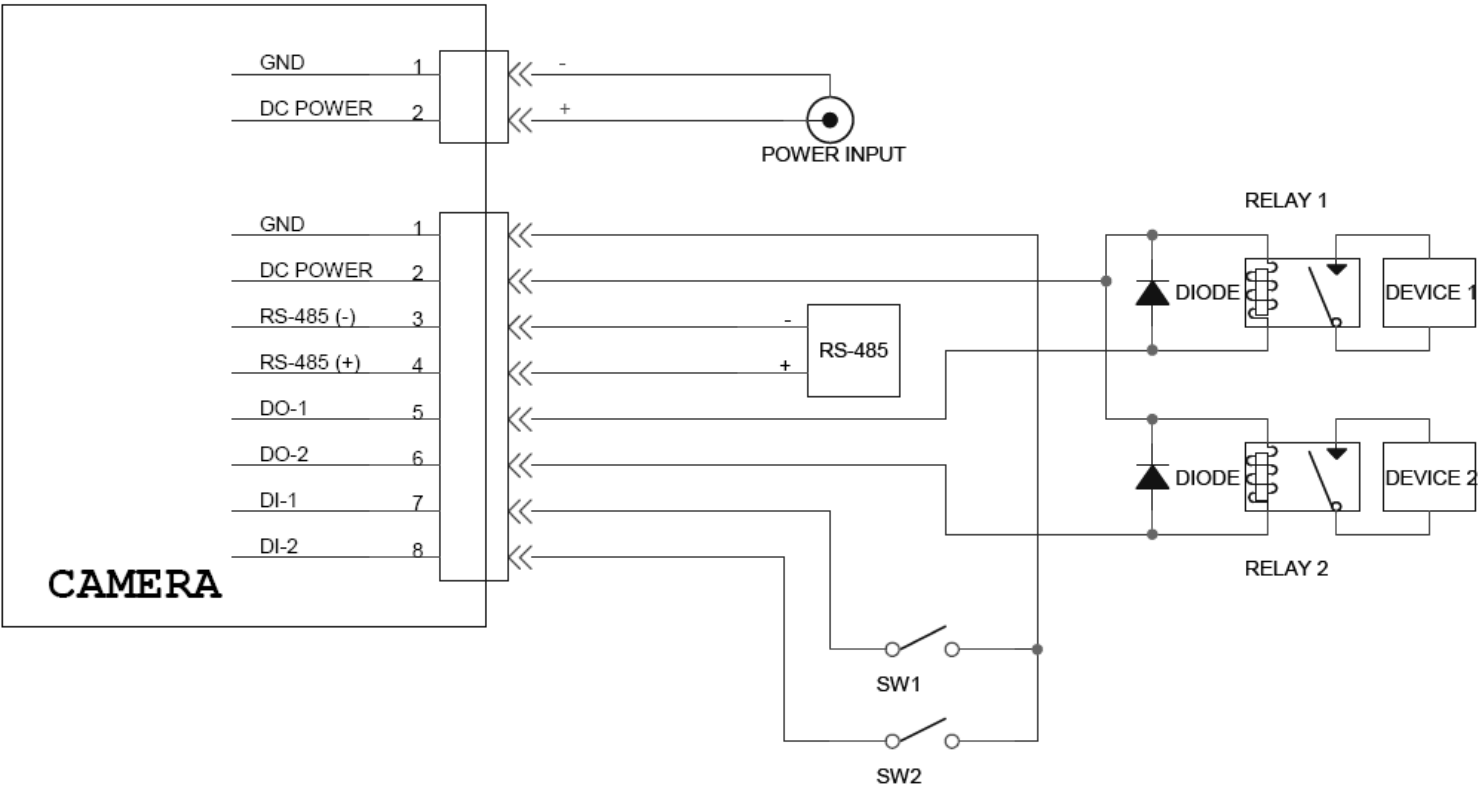


Reset: When the device is powered, press the Reset Button to reboot the device, or hold the Reset Button for 5 seconds to set the settings back to factory default.

I/O Terminal Block Pin Definition

PIN	Definition	Description	Max. V/A
1	Ground		-
2	+ 12V DC		12V DC 1.2W
3	RS-485 -		-
4	RS-485 +		-
5	Digital Output 1	Uses an NPN transistor with the emitter connected to the GND pin. If used with an external relay, a diode must be connected in parallel with the load for protection against voltage transients.	100 mA 24V
6	Digital Output 2	Uses an NPN transistor with the emitter connected to the GND pin. If used with an external relay, a diode must be connected in parallel with the load for protection against voltage transients.	100mA 24V
7	Digital Input 1	Connected to GND to activate, or leave floating (or unconnected) to deactivate.	30V DC
8	Digital Input 2	Connected to GND to activate, or leave floating (or unconnected) to deactivate.	30V DC

I/O Terminal Block Circuit



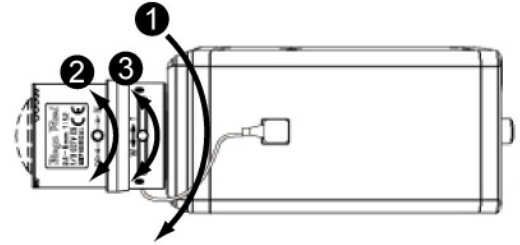
LED Indicator Definition

LED	Color	Indication
Power	Steady Red	Power on
	Steady Green	Start up completed
	Steady Green-->Unlit	Push reset button: reset to reboot
	Steady Green-->Unlit-->Steady Green	Push reset button for at least 5 secs: reset to factory default
	Steady Green-->Flash Amber	Firmware upgrading
	Flash Amber-->Flash Red	Firmware failed upgrade
Ethernet	Flash Amber	Wired packet transmission
	Steady Green	Network activity
MicroSD Card	Steady Green	Accessing the MicroSD card

Install the hardware and connect all cables

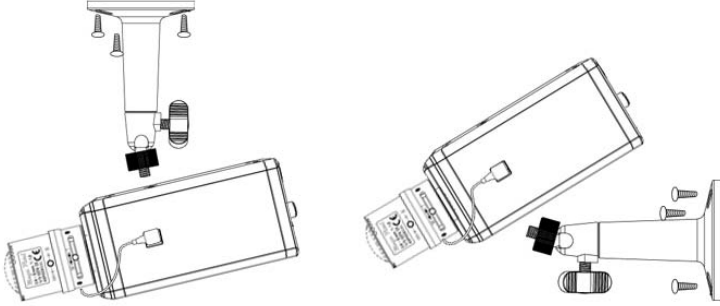
a. Mounting the Lens to the Camera

1. Mount the lens by turning it clockwise on the camera until it stops.
2. Unscrew the focus controller to adjust to the desired focus.
3. Tighten the focus controller when completing.



b. Wall mounting and Ceiling mounting

1. Use the 3 supplied screws to fix the base plate to a flat surface.

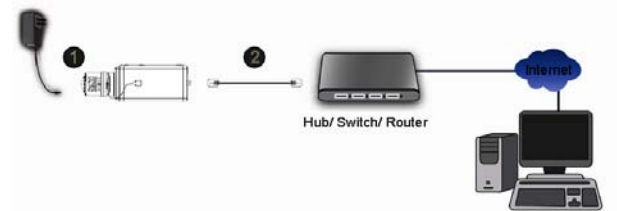


2. Loosen the lock ring to adjust the desired angle of the camera.
3. Tighten the lock ring.

c. Connect all cables

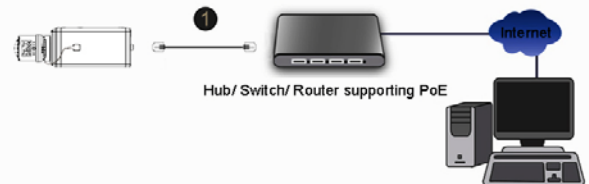
c1. Without Power over Ethernet (PoE) connection

1. Connect the power adaptor to the IP Camera.
2. Using a standard RJ-45 network cable, connect the IP Camera to a normal Hub / Switch / Router.



c2. Power over Ethernet (PoE)

1. Using a standard RJ-45 network cable, connect the IP Camera to a PoE-enabled Hub / Switch / Router.



c3. Wireless connection

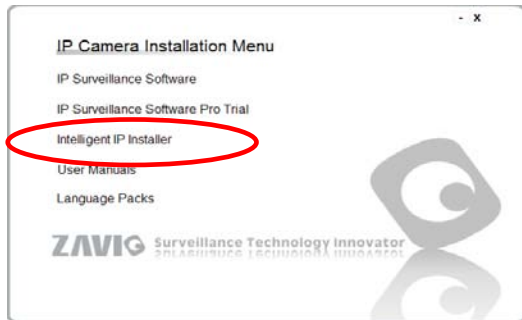
1. Connect the power adaptor to IP Camera.
2. Insert the Wi-Fi dongle.
3. Connect to Wi-Fi



Microsoft OS: Use the software CD to install Intelligent IP Installer

Power on your PC and insert the CD-ROM. The setup page will show up automatically. Please follow these steps to install the firmware.

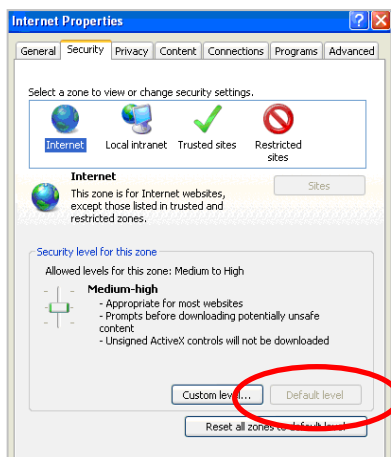
Select **“Intelligent IP Installer”** and follow the installation process to complete the installation.



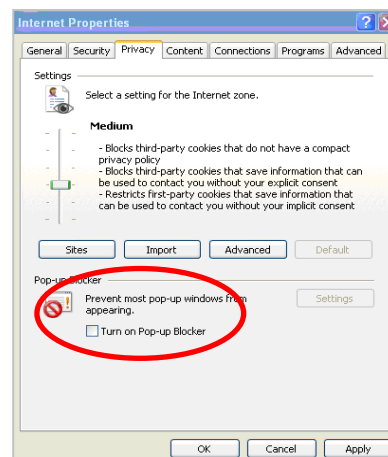
Access the IP Camera using Intelligent IP Installer

1. Please check two settings before using Intelligent IP Installer .

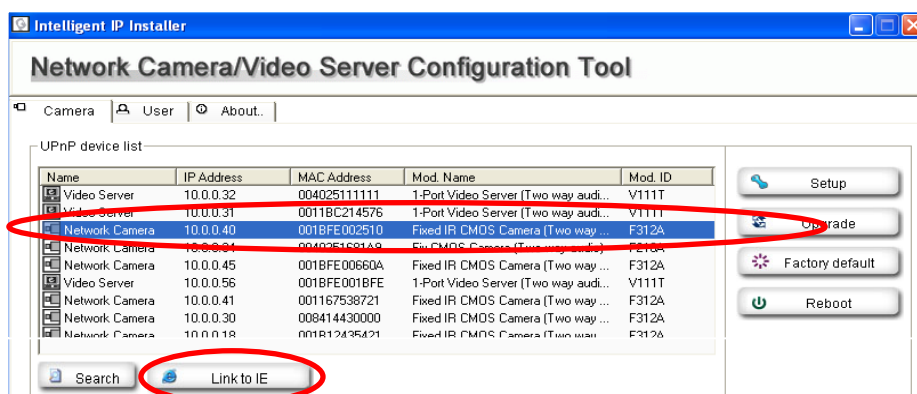
a. Browser's Internet Properties → Security
→ **Default Level**



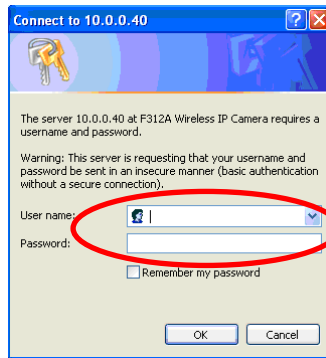
b. Browser's Internet Properties → Privacy
→ **Uncheck Pop-up Blocker**



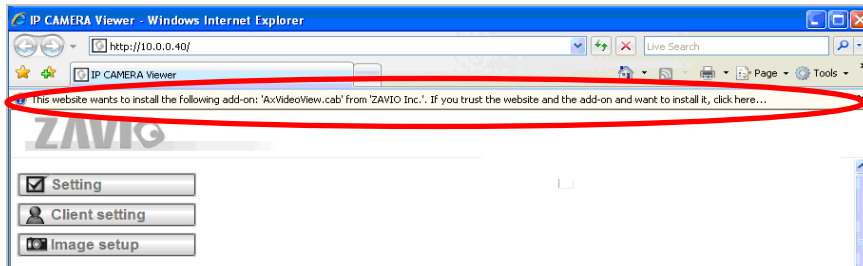
2. Click the Intelligent IP Installer Icon on your desktop. The main page will show up listing all active camera and video server devices. Select the relevant IP camera from the list and click **Link to IE**.



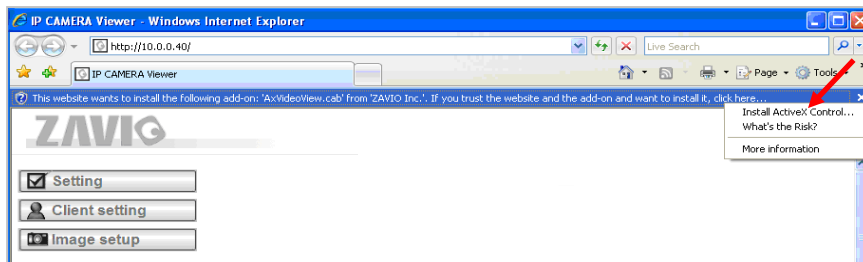
3. Enter your Username and Password to login to the IP Camera.
(Default is admin / admin)



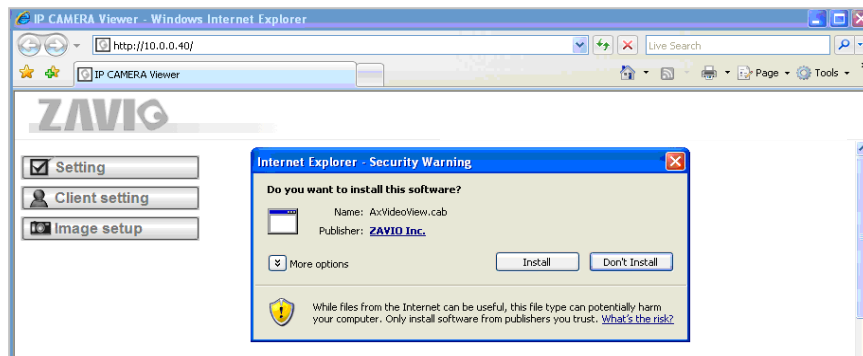
4. When accessing the IP Camera for the first time, a yellow information bar appears below the address bar:
This website wants to install the following add-on: 'AxvideoView.cab from 'Zavio Inc'.



5. Click the information bar, and select **Install ActiveX control**.



6. Click **Install**.

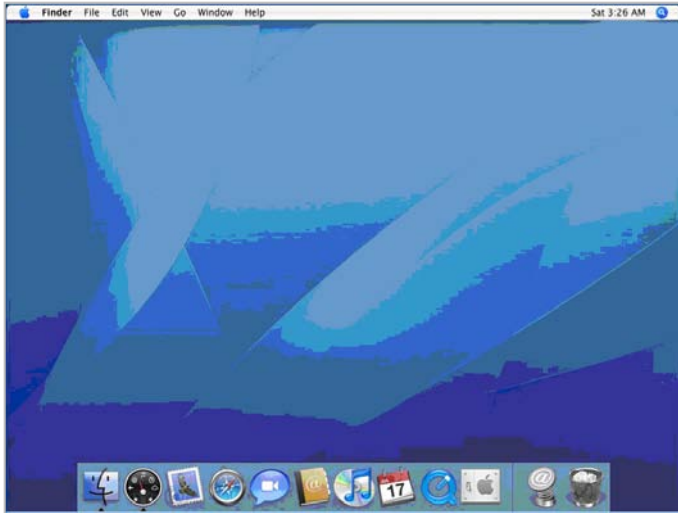


7. Live video displays in the centre of your web browser.

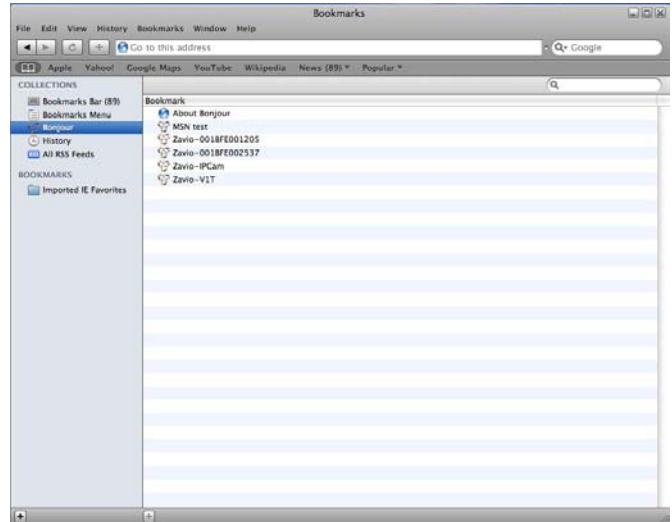


Mac OS using Safari Browser

1. Select **Safari icon**



2. Click **Bonjour function** and select the camera you wish to access.



3. Enter name and password to login to the IP camera. (Default is admin / admin)



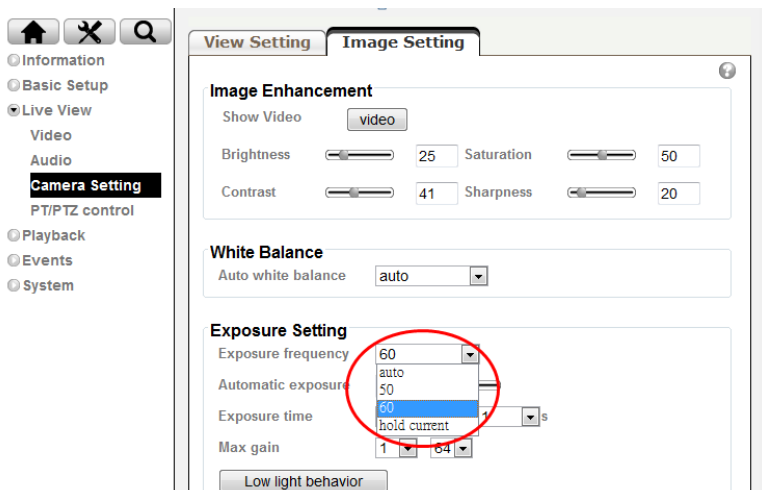
4. The monitor image will be displayed in your browser.



Lighting environment setting

The default setting of lighting environment is **Auto**. However, you may also select 50 or 60 Hz upon the lighting environment of your country.

Go to “Setting > Live View > Camera Setting > Image Setting”, select the environment setting you wish.



Change the Web Interface into your preferred language

Use the settings screen to set the language of the Web Interface.

Go to “Setting > System > Maintenance ”.

1. Insert Software CD into your CD-ROM.
2. Browse and select the preferred language from language pack in the Software CD and then click OK.
3. The web interface will change into your preferred language.

Upload Language Pack

Upload language pack to this network camera from chosen file:

No file chosen

Language: English

Wireless Setting

Power the IP Camera and connect an Ethernet network cable to the IP Camera’s LAN port, then insert the USB Wi-Fi dongle at the rear. Using Intelligent IP Installer and entering the camera’s setting page.

Please go to “Setting > Basic Setup > Network > WLAN”, set the wireless option to “Enable”

1. Click Refresh and choose the AP you wish to connect and click Connect.
2. Enter the password within the **Active transmit key** field if required.
3. Choose the option of Obtain an IP address automatically (DHCP) and Obtain DNS server address automatically.
4. Click “Save” to apply settings. The **Wireless IP address** appears in the **IP address** field.

Information Basic Setup Account **Network** Date Time Video Audio Live View Playback Events System

TCP/IP PPPoE **WLAN**

WLAN

WLAN

MAC address 00:0E:8E:2C:74:37

IP address 0.0.0.0

Status of wireless networks

ESSID	Signal strength	Security	Radio type
SoftAP-David	good	WPA2-PSK/AES	11b/g/n
linksys@#\$%^...	good	Open/WEP	11b/g/n
QC	good	WPA2-PSK/TKIP	11b/g
Mick-SoftAP	good	Open/Unsecured	11b/g/n
ZyXEL_Eason	excellent	WPA(2)-PSK/TKIP, AES	11b/g/n

Note: The wireless private IP address can be found in Intelligent IP Installer

Memo



Memo



Memo



Memo



Memo



