

Foodcare

HI981034
Milk pH Tester

Warranty

HI981034 is warranted for a period of one year against defects in workmanship and materials when used for its intended purpose and maintained according to instructions. This warranty is limited to repair or replacement free of charge. Damage due to accidents, misuse, tampering or lack of prescribed maintenance is not covered. If service is required, contact your local Hanna Instruments Office. If under warranty, report the model number, date of purchase, serial number and the nature of the problem. If the repair is not covered by the warranty, you will be notified of the charges incurred. If the instrument is to be returned to Hanna Instruments, first obtain a Returned Goods Authorization (RGA) number from the Technical Service department and then send it with shipping costs prepaid. When shipping any instrument, make sure it is properly packaged for complete protection.

Recommendations for Users

Before using this product, make sure it is entirely suitable for your specific application and for the environment in which it is used. Any variation introduced by the user to the supplied equipment may degrade the tester's performance. For yours and the tester's safety do not use or store the tester in hazardous environments.

Certification

All Hanna Instruments conform to the CE European Directives.

Disposal of Electrical & Electronic Equipment. The product should not be treated as household waste. Instead hand it over to the appropriate collection point for the recycling of electrical and electronic equipment which will conserve natural resources.

Disposal of waste batteries. This product contains batteries, do not dispose of them with other household waste. Hand them over to the appropriate collection point for recycling.

Ensuring proper product and battery disposal prevents potential negative consequences for the environment and human health. For more information, contact your city, your local household waste disposal service, the place of purchase or go to www.hannainst.com.

Hanna Instruments reserves the right to modify the design, construction, or appearance of its products without advance notice.

All rights are reserved. Reproduction in whole or in part is prohibited without the written consent of the copyright owner, Hanna Instruments Inc., Woonsocket, Rhode Island, 02895, USA.

Care & Maintenance

Please read the information below, to ensure the highest possible accuracy:

- Fresh buffer should be used for each calibration, once the sachets are opened the buffer value can change over time.
- For improved accuracy a two-point calibration is recommended.
- If the electrode is slow or sluggish, soak it in cleaning solution for 20 minutes. Rinse with water and hydrate the electrode in storage solution for a minimum of 30 minutes before calibrating.
- If measurements are taken successively, rinse the probe thoroughly in distilled or deionized water to eliminate cross-contamination.
- When not in use, add a few drops of storage solution to the protective cap to keep the glass tip and the junction hydrated. If storage solution is not available, pH 4.01 or pH 7.01 buffer can be used. Never store the probe in distilled or deionized water.

Note: Never immerse the tester over the maximum immersion level.

Battery Replacement

To change the CR2032 lithium-ion battery, turn the battery cover, located on the back of the tester, counterclockwise to unlock. Remove cover and replace the battery with positive (+) side facing out.

Note: Only use the battery type specified in the manual. Old batteries should be disposed in accordance with local regulations.



Accessories

pH Buffer Solution

HI70004P	pH 4.01 buffer solution, 20 mL sachet (25 pcs.)
HI70007P	pH 7.01 buffer solution, 20 mL sachet (25 pcs.)
HI77400P	pH 4.01 & 7.01 buffer solution, 20 mL sachet (10 pcs., 5 each)

Electrode Cleaning Solution

HI700601P	General purpose cleaning solution, 20 mL sachet (25 pcs.)
HI700640P	Cleaning solution for milk deposits, 20 mL sachet (25 pcs.)
HI700641P	Cleaning and disinfection solution for dairy products, 20 mL sachet (25 pcs.)

Electrode Storage Solution

HI70300L	Electrode storage solution, 500 mL
HI70300M	Electrode storage solution, 230 mL
HI9072	Electrode storage solution, 13 mL dropper

Auto-Off



From measurement mode, press and hold the ON/OFF button. The LCD will show "OFF", "CAL" followed by "d08" (default setting, 8 minutes). Release the ON/OFF button. A single press on the ON/OFF button will change the auto-off timer to "d60" (60 minutes). To disable the auto-off feature press the ON/OFF button again, LCD will show "d--". Press and hold to exit.

Clear Calibration



To clear the user calibration and restore the tester to factory default. From calibration mode, press and hold the ON/OFF button, the LCD will show "CLr".

"Err" Message



In calibration mode, if the probe is in the correct buffer solution and the "Err" message is displayed, the probe should be cleaned. Soak the probe in cleaning solution for 20 minutes. Rinse with water and hydrate electrode in storage solution for a minimum of 30 minutes before calibrating.

Battery Indicator



When the battery level is low, the tag on the LCD will blink. When the battery is depleted the "Err" message is displayed and the tester is powered off.



RoHS compliant



Dear Customer,

Thank you for choosing a Hanna Instruments product. Please read this instruction manual carefully before using the tester.

For more information about Hanna Instruments and our products, visit www.hannainst.com or e-mail us at sales@hannainst.com.

For technical support, contact your local Hanna Instruments Office or e-mail us at tech@hannainst.com.

Preliminary Examination

Remove the tester and accessories from the packing material and examine it carefully. If you require any further information, please contact Hanna Instruments technical support team at tech@hannainst.com.

Each HI981034 is delivered in a cardboard box and is supplied with:

- HI70004 pH 4.01 buffer solution, 20 mL sachet (2 pcs.)
- HI70007 pH 7.01 buffer solution, 20 mL sachet (2 pcs.)
- HI700640 Cleaning solution for milk deposits (2 pcs.)
- HI9072 Electrode storage solution, 13 mL dropper
- CR2032 3V Lithium-ion battery
- Instrument quality certificate
- Instruction manual

Note: Save all packing material until you are sure that the tester works correctly. Any damaged or defective item must be returned in its original packing material with the supplied accessories.

General Description & Intended Use

The HI981034 Milk pH Tester is designed to measure the pH during the milk production process.

It features a single button operation system and is easy to use. It has a compact and waterproof casing and automatic pH calibration at one or two points.

All readings are automatically compensated for temperature variations with a built-in temperature sensor.

It is equipped with a specialized built-in probe. The conical tip allows measurements to be taken directly in solid or semisolid samples.

Probe Features

Conical Tip

The conical tip allows for easy penetration into semisolids which is needed when wanting to take a direct measurement in milk.

Specialized Glass Formulation

Specialized low temperature (LT) pH glass ensures fast stabilization and accurate results at lower temperatures.



Open Junction Reference

The open junction design consists of a solid gel interface between the sample and internal Ag/AgCl reference. This interface prevents silver from entering the sample and makes it impermeable to clogging, resulting in a fast response and stable reading.

Specifications

Range	0.00 to 12.00 pH
Resolution	0.01 pH
Accuracy	±0.05 pH
Calibration	Automatic, one or two-point
Temperature compensation	Automatic, 0 to 50 °C
Electrode	Built-in probe for specific application
Battery type	CR2032 Lithium-ion (included)
Battery life	Approximately 800 hours of continuous use
Auto-off	8 minutes, 60 minutes or disabled
Environment	0 to 50 °C (32 to 122 °F); RH 95% max
Dimensions	51 x 159 x 21 mm (2 x 6.3 x 0.9")
Weight	52 g (1.83 oz.)

Functional Description & LCD Display



Preparation

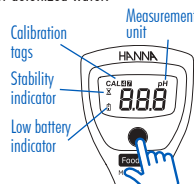
- Remove the protective cap. Do not be alarmed if salt deposits are present. Rinse the probe with water and blot dry.
- If the glass and / or junction are dry soak the electrode (bottom 4 cm / 1.5") in storage solution for a minimum of 30 minutes. Rinse with water and blot dry.
- Calibrate the electrode before using. For best results is recommended to recalibrate periodically.

Storage

- To ensure a quick response, the glass tip and junction should be kept moist.
- Replace the protective cap with a few drops of storage solution when not in use. Do not store the electrode in distilled or deionized water.

Operation

Press the ON/OFF button to turn the tester on. The tester displays all LCD segments for a few seconds. The tester will enter measurement mode, the current reading and calibrated buffers will be shown.



A One or Two-Point Calibration with pH 7.01



One-Point



Two-Point

Press the ON/OFF button to save the one-point calibration.



"Sto" will be displayed when the calibration is saved.



The tester will return to measurement mode and the calibration tag will be displayed.

When "7.01" is displayed, place the tip of the electrode in pH 7.01 buffer. When the reading is stable, the stability icon will disappear.

Place the tip of the electrode in pH 4.01 buffer. The buffer is automatically recognized, the stability indicator will blink.



Wait until the measurement is stable and the stability indicator disappears. "Sto" will be displayed when the calibration is saved.



The tester will return to measurement mode and the calibration tag will be displayed.

B One-Point Calibration with pH 4.01



When "7.01" is displayed, place the tip of the electrode in pH 4.01 buffer. The buffer value will be recognized automatically and "4.01" will be displayed.



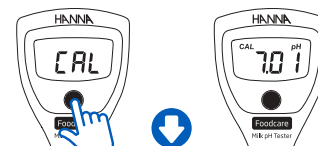
When the reading is stable, the stability indicator will disappear. "Sto" will be displayed when the calibration is saved.



The tester will return to measurement mode and the calibration tag will be displayed.

Calibration

From measurement mode, press and hold the ON/OFF button until "CAL" is displayed.



A For one or two-point calibration using pH 7.01 buffer solution, follow procedure A.

B For one-point calibration using pH 4.01 buffer solution, follow procedure B.

Note: It is recommended to calibrate the electrode with buffers at the temperature it will be used at.