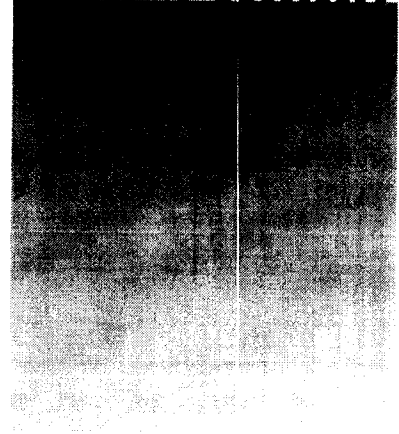


# User's Guide



**Shop online at**

**omega.com<sup>®</sup>**  
Ω OMEGA<sup>®</sup>

*omega.com*

*e-mail: info@omega.com*

*For latest product manuals:*

*omegamannual.info*



MADE IN TAIWAN

# WSB-8000 Electronic Weighing Scale

**omega.com®**

Ω OMEGA

**OMEGAnet® Online Service**  
**omega.com**

**Internet e-mail**  
**info@omega.com**

### **Servicing North America:**

**U.S.A.:**  
ISO 9001 Certified  
One Omega Drive, P.O. Box 4047  
Stamford, CT 06907-0047  
TEL: (203) 359-1660  
FAX: (203) 359-7700  
e-mail: info@omega.com

**Canada:**  
976 Bergar  
Laval (Quebec) H7L 5A1, Canada  
TEL: (514) 856-6928  
FAX: (514) 856-6886  
e-mail: info@omega.ca

### **For immediate technical or application assistance:**

**U.S.A. and Canada:** Sales Service: 1-800-826-6342/1-800-TC-OMEGA®  
Customer Service: 1-800-622-2378/1-800-622-BEST®  
Engineering Service: 1-800-872-9436/1-800-USA-WHEN®

**Mexico:**  
En Español: (001) 203-359-7803  
e-mail: espanol@omega.com  
FAX: (001) 203-359-7807  
info@omega.com.mx

### **Servicing Europe:**

**Czech Republic:** Frystatska 184, 733 01 Karviná, Czech Republic  
TEL: +420 (0)59 6311899  
FAX: +420 (0)59 6311114  
Toll Free: 0800-1-66342  
e-mail: info@omegashop.cz

**Germany/Austria:** Daimlerstrasse 26, D-75392 Deckenpfronn, Germany  
TEL: +49 (0)7056 9398-0  
FAX: +49 (0)7056 9398-29  
Toll Free in Germany: 0800 639 7678  
e-mail: info@omega.de

**United Kingdom:**  
ISO 9002 Certified  
One Omega Drive, River Bend Technology Centre  
Northbank, Irlam, Manchester  
M44 5BD United Kingdom  
TEL: +44 (0)161 777 6611  
FAX: +44 (0)161 777 6622  
Toll Free in United Kingdom: 0800-488-488  
e-mail: sales@omega.co.uk

---

It is the policy of OMEGA Engineering, Inc. to comply with all worldwide safety and EMC/EMI regulations that apply. OMEGA is constantly pursuing certification of its products to the European New Approach Directives. OMEGA will add the CE mark to every appropriate device upon certification.

The information contained in this document is believed to be correct, but OMEGA accepts no liability for any errors it contains, and reserves the right to alter specifications without notice.

**WARNING:** These products are not designed for use in, and should not be used for, human applications.

## WARRANTY/DISCLAIMER

OMEGA ENGINEERING, INC. warrants this unit to be free of defects in materials and workmanship for a period of **13 months** from date of purchase. OMEGA's WARRANTY adds an additional one (1) month grace period to the normal **one (1) year product warranty** to cover handling and shipping time. This ensures that OMEGA's customers receive maximum coverage on each product.

If the unit malfunctions, it must be returned to the factory for evaluation. OMEGA's Customer Service Department will issue an Authorized Return (AR) number immediately upon phone or written request. Upon examination by OMEGA, if the unit is found to be defective, it will be repaired or replaced at no charge. OMEGA's WARRANTY does not apply to defects resulting from any action of the purchaser, including but not limited to mishandling, improper interfacing, operation outside of design limits, improper repair, or unauthorized modification. This WARRANTY is VOID if the unit shows evidence of having been tampered with or shows evidence of having been damaged as a result of excessive corrosion; or current, heat, moisture or vibration; improper specification; misapplication; misuse or other operating conditions outside of OMEGA's control. Components in which wear is not warranted, include but are not limited to contact points, fuses, and triacs.

**OMEGA is pleased to offer suggestions on the use of its various products. However, OMEGA neither assumes responsibility for any omissions or errors nor assumes liability for any damages that result from the use of its products in accordance with information provided by OMEGA, either verbal or written. OMEGA warrants only that the parts manufactured by the company will be as specified and free of defects. OMEGA MAKES NO OTHER WARRANTIES OR REPRESENTATIONS OF ANY KIND WHATSOEVER, EXPRESSED OR IMPLIED, EXCEPT THAT OF TITLE, AND ALL IMPLIED WARRANTIES INCLUDING ANY WARRANTY OF MERCHANTABILITY AND FITNESS FOR A PARTICULAR PURPOSE ARE HEREBY DISCLAIMED. LIMITATION OF LIABILITY: The remedies of purchaser set forth herein are exclusive, and the total liability of OMEGA with respect to this order, whether based on contract, warranty, negligence, indemnification, strict liability or otherwise, shall not exceed the purchase price of the component upon which liability is based. In no event shall OMEGA be liable for consequential, incidental or special damages.**

CONDITIONS: Equipment sold by OMEGA is not intended to be used, nor shall it be used: (1) as a "Basic Component" under 10 CFR 21 (NRC), used in or with any nuclear installation or activity; or (2) in medical applications or used on humans. Should any Product(s) be used in or with any nuclear installation or activity, medical application, used on humans, or misused in any way, OMEGA assumes no responsibility as set forth in our basic WARRANTY/DISCLAIMER language, and, additionally, purchaser will indemnify OMEGA and hold OMEGA harmless from any liability or damage whatsoever arising out of the use of the Product(s) in such a manner.

## RETURN REQUESTS/INQUIRIES

Direct all warranty and repair requests/inquiries to the OMEGA Customer Service Department. BEFORE RETURNING ANY PRODUCT(S) TO OMEGA, PURCHASER MUST OBTAIN AN AUTHORIZED RETURN (AR) NUMBER FROM OMEGA'S CUSTOMER SERVICE DEPARTMENT (IN ORDER TO AVOID PROCESSING DELAYS). The assigned AR number should then be marked on the outside of the return package and on any correspondence.

The purchaser is responsible for shipping charges, freight, insurance and proper packaging to prevent breakage in transit.

FOR **WARRANTY** RETURNS, please have the following information available BEFORE contacting OMEGA:

1. Purchase Order number under which the product was PURCHASED,
2. Model and serial number of the product under warranty, and
3. Repair instructions and/or specific problems relative to the product.

FOR **NON-WARRANTY** REPAIRS, consult OMEGA for current repair charges. Have the following information available BEFORE contacting OMEGA:

1. Purchase Order number to cover the COST of the repair,
2. Model and serial number of the product, and
3. Repair instructions and/or specific problems relative to the product.

OMEGA's policy is to make running changes, not model changes, whenever an improvement is possible. This affords our customers the latest in technology and engineering.

OMEGA is a registered trademark of OMEGA ENGINEERING, INC.

© Copyright 2007 OMEGA ENGINEERING, INC. All rights reserved. This document may not be copied, photocopied, reproduced, translated, or reduced to any electronic medium or machine-readable form, in whole or in part, without the prior written consent of OMEGA ENGINEERING, INC.

# Where Do I Find Everything I Need for Process Measurement and Control? **OMEGA...Of Course!** *Shop online at [omega.com](http://omega.com)*

## **TEMPERATURE**

- Thermocouple, RTD & Thermistor Probes, Connectors, Panels & Assemblies
- Wire: Thermocouple, RTD & Thermistor
- Calibrators & Ice Point References
- Recorders, Controllers & Process Monitors
- Infrared Pyrometers

## **PRESSURE, STRAIN AND FORCE**

- Transducers & Strain Gages
- Load Cells & Pressure Gages
- Displacement Transducers
- Instrumentation & Accessories

## **FLOW/LEVEL**

- Rotameters, Gas Mass Flowmeters & Flow Computers
- Air Velocity Indicators
- Turbine/Paddlewheel Systems
- Totalizers & Batch Controllers

## **pH/CONDUCTIVITY**

- pH Electrodes, Testers & Accessories
- Benchtop/Laboratory Meters
- Controllers, Calibrators, Simulators & Pumps
- Industrial pH & Conductivity Equipment

## **DATA ACQUISITION**

- Data Acquisition & Engineering Software
- Communications-Based Acquisition Systems
- Plug-in Cards for Apple, IBM & Compatibles
- Datalogging Systems
- Recorders, Printers & Plotters

## **HEATERS**

- Heating Cable
- Cartridge & Strip Heaters
- Immersion & Band Heaters
- Flexible Heaters
- Laboratory Heaters

## **ENVIRONMENTAL MONITORING AND CONTROL**

- Metering & Control Instrumentation
- Refractometers
- Pumps & Tubing
- Air, Soil & Water Monitors
- Industrial Water & Wastewater Treatment
- pH, Conductivity & Dissolved Oxygen Instruments

# **USER MANUAL**

## **ELECTRONIC WEIGHING SCALE**

### **TABLE TOP SCALE SERIES**

**Item Number:**

**WSB - 8000**

**6 keys function**

Thank you to purchase our OMEGA scale , please read this manual before try to operate the scale.

## **I. Before operation:**

1. Place the scale on a stable surface.
2. Adjust four feet to center of the bubble on the scale.
3. Avoid hot sunshine directly on the scale or near the exhaust port of ventilating system.
4. Please prevent from getting wet and direct wash the scale , if gets wet please wipe it dry . Always keeps scale cleaning.
5. Keep it away from high temperatures and damp conditions.

## **II. DESCRIPTION OF POWER SUPPLY**

A. Power switch. ( located on scale bottom or indicator right bottom side. )

B. Charging instruction:

Power supplies: DC 6V 4.5A internal rechargeable battery.





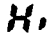



Power consumption: about DC 20mA , with backlight about DC 40mA.

Low battery: there is a round lamp on left side of the screen. When the lamp flashing , the battery needs recharging.

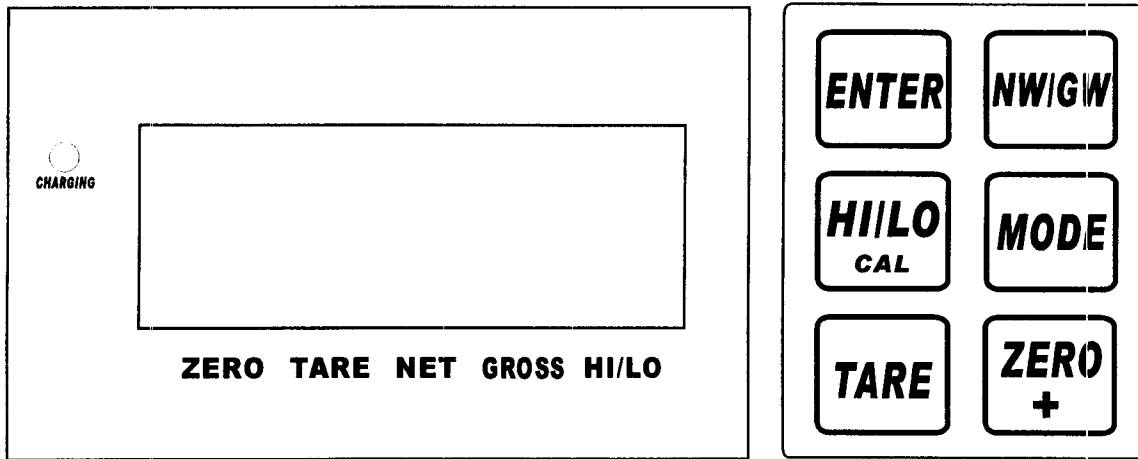
### **Note:**

1. The scale is available used lasting over 150 hours , in order to keep sufficient power please recharge it every day to prolong battery life.
2. When recharging , please don't share power with other equipment , and avoid electromagnetic interfering from other device.
3. If the machine will not be used for sometime , the scale must be recharged ( the internal battery ) every 3 months . When it used , please recharge scale before using.
4. When screen recharging lamp appears red , means in recharging.
5. When screen recharging lamp appears green , means recharging full.

### III. Key pad function:

1.  Press this key to return the display to a zero reading.
  
2.  To deduct the weight of a container.
  1. Ensure that there is no weight on the weighing platform.
  2. Place an empty container on the scale platform.
  3. Press TARE key to deduct the weight of the empty container.
  4. Place a weight in the container to obtain the net weight of the item.
  5. To clear the tare function, simply press the TARE key again.
  6. The Tare indicator light is on when the tare function is activated.
  7. The tare range is from capacity 0kg to the scale's maximum capacity.
  8. To review net weight or gross weight, press NW/GW key to display gross weight, when press NW/GW key again to display Net weight.
  
3.  (1) Preset required high and low limited weight, when reaches the weight. There is a beep sound to warn the user.  
(Ex. To set high weight: 3.000kg, low weight: 1.200kg.)  
Press Hi/Lo key, when displays  Input 1.200  
Press Hi/Lo key, when displays  input 3.000  
Press Hi/Lo key again, finished.  
(You may use ZERO(+) to increase value or NW/GW key to move)
  
4. 
  1. While at tare mode, press NW/GW key to display net weight and gross weight value.
  2. press NW/GW key lasting 3 seconds, scale will go into LED brightness adjustment, use ZERO key to select brighter or darker, when press NW/GW key again to confirm setup.
  
5.  Unit weight conversion. (Kg or lb)  
※Unit weight will be stored at next operation.
  
6.  Prepare key.  
(When perform Rs232 function to use as confirm key to send weight data to computer)










- Note:**
1. Hi/Lo key : to be confirmed key or skip .
  2. NW/GW key: to be right movement key.
  3. ZERO: to be value increasing key.



#### IV. Available capacity and graduation:

Item	Capacity	Graduation	Resolution
FAT-8015	1.5kg	0.1g	1/15000
FAT-8030	3.0kg	0.2g	1/15000
FAT-8060	6.0kg	0.5g	1/12000
FAT-8150	15.0kg	1.0g	1/15000

#### V. Backlight function setting:

<1>. Press "TARE" lasting 3 seconds , when displays "0", release it. Backlight mode is off (Originate setting)	  
<2>. Press "HI/LO" lasting 3 seconds , when displays "1" release it. Backlight mode is Auto-backlight.	  
<3>. Press "MODE" lasting 3 seconds , when displays "2" release it. Scale have switched to backlight function automatically.	  
<p>Note: The backlight status will be memorized. After the scale is off , the backlight mode will be remained sane as when turn on scale next time.</p>	



## VI. Calibration procedure

### Notice:

- Using calibration standard is not less than 1/6 of Scale's max. capacity.
- Using calibration standard weight is not over max. Of Capacity.
- Before calibration, please leave platform empty and turn off power.

### ◎ Keypad function chart ◎



Confirmed key



Movement key



Number increasing key

Example: 30kg scale use 5kg weighing standard to calibrate.

<1>. Turn off the power.	
<2>. Press "HI/LO" key then turn on the power at same time.	
<3>. Screen display "1".	
<4>. Press "ZERO" key to display "2".	
<5>. Press "HI/LO" key to display "3".	
<6>. Press "ZERO" key to display "123".	
<7>. Screen display "P6" then "999999" figures backward decrease.	
<8>. After 20 seconds will appear originate calibration capacity.	
<9>. Press "ZERO" key to change value from "3" to "0".	
<10>. Press "NW/GW" to alter flash digits location.	
<11>. Press "ZERO" key to change value from "0" to "5".	
<12>. Place the weighing standard of 5kg on scale, press "HI/LO" key to display "05.000" on screen.	
<p>Note: If displayed value and standard with difference, take away  press "ZERO" key for turning to "0", repeat &lt;12&gt; till no difference.</p>	
<13>. After above is done, turn off and on the scale to finish the calibration.	
<p>Below screen, red light means the function is being used, when erased the function, indication light put out</p>	

---

---

# **RS-232**

# **SERVICE MANUAL**

## **CONTENT**

---

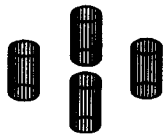
---

<b>1. Installation parts.....</b>	<b>1</b>
<b>2. Rs232 Software installation specification.....</b>	<b>2</b>
<b>3. Screen specification.....</b>	<b>3</b>
<b>4. RS232 Communication agreement&amp;Input signal length.....</b>	<b>4</b>
<b>5. Communication connection.....</b>	<b>5</b>
<b>6. Data receiving screen show.....</b>	<b>6</b>
<b>7. Trouble shooting.....</b>	<b>7</b>

---

---

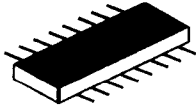
**[—] Installation parts :**



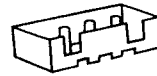
C40~C41 capacitor=22uF16V



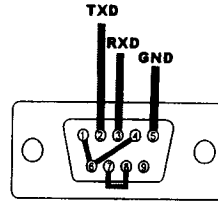
C44A capacitor=100uF16V



U21 =HIN232CP



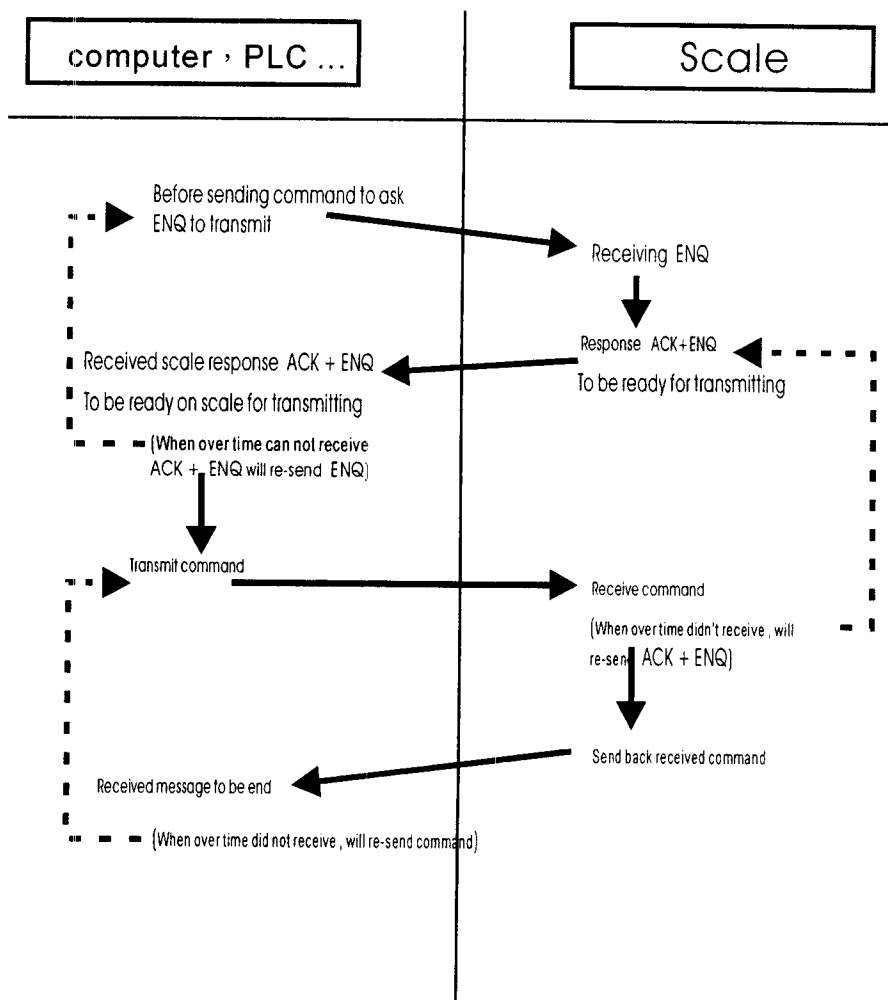
J6=2.5mm3pin line



Circuit diagram

Rs232 socket female 9pin + 2.5mm 3pin line

**Bi-direction communication software(Handshaking) description**



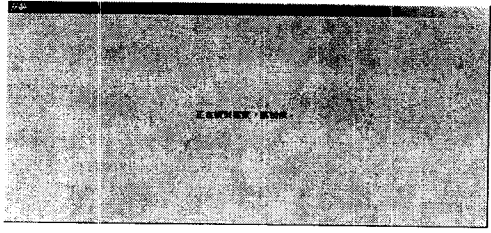
## [二] RS232 SOFTWARE INSTALLATION SPECIFICATION :

Insert CD-ROM, SET UP automatically:  
(If couldn't install automatically, please execute CD of file "setup.exe")

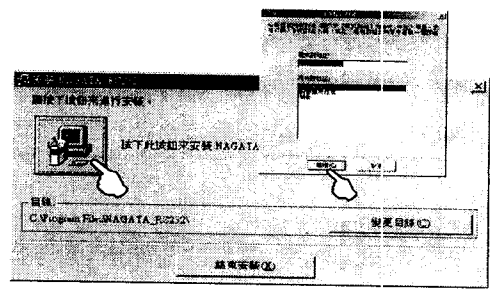


### 1. Start install:

Screen as following:

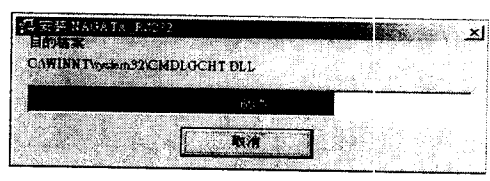


### 4. Select the program group, start installation :

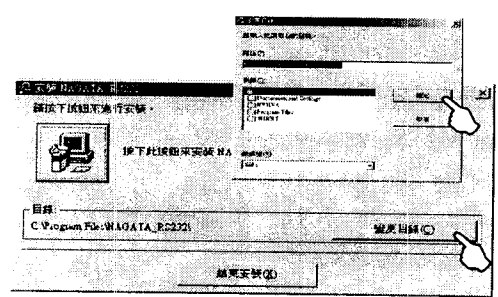


### 2. Confirm if install or finish installation:

After confirmation, click [NEXT]



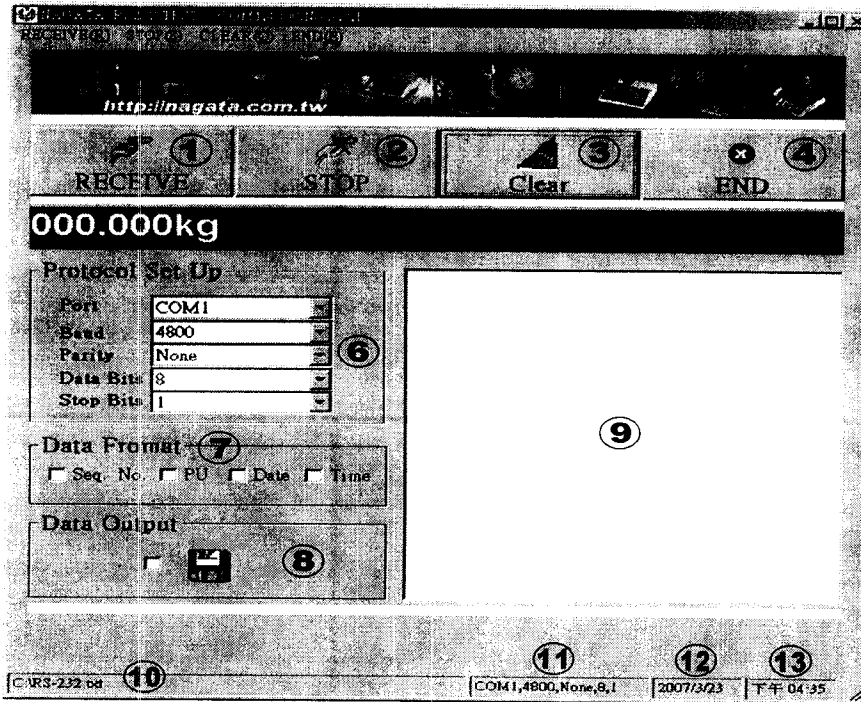
### 3. Select the installation route:



### 6. Installation successfully :



## [三] Screen specification :



NAME	FUNCTION	NAME	FUNCTION
① <b>Receive</b>	Start sending data	⑧ <b>Data Output</b>	Sending data to a file
② <b>Stop</b>	Stop sending data	⑨ <b>Display alphabetic string</b>	Output all alphabetic string
③ <b>Clear</b>	Clear all data	⑩ <b>Txt.file setup rout</b>	
④ <b>End</b>	Finish	⑪ <b>Protocol Set Up</b>	
⑤ <b>Display weight</b>	Display weight	⑫ <b>Date</b>	
⑥ <b>Protocol Set Up</b>	Communication agreement	⑬ <b>Time</b>	
<b>Port</b>	Communication port		
<b>Baud</b>	Baud rate		
<b>Parity</b>	Parity bit		
<b>Data Bits</b>	Data bit		
<b>Stop Bits</b>	Stop bit		
⑦ <b>Data Format</b>	Edit data		
<b>Seq.No.</b>			
<b>PU</b>	Symbol		
<b>Date</b>	Date		
<b>Time</b>	Time		

## [四] RS232 Communication agreement & Input signal length :

### 1. Communication agreement :

Baud Rate : 4800 or 9600

Parity Bit : EVEN , ODD , MARK, SPACE, NONE (normal use "None")

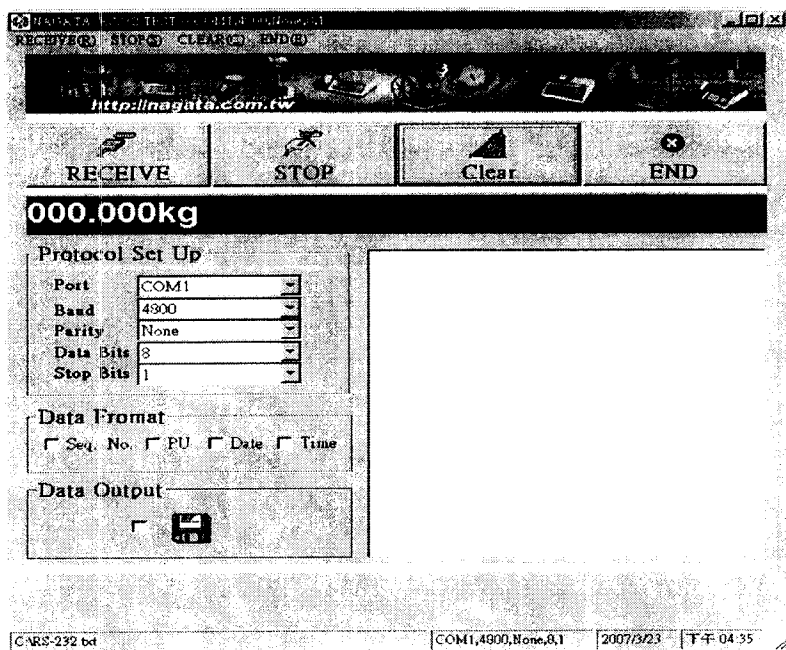
Data Bit : 7 or 8 (normal use 8)

Stop Bit : 1 or 2 (normal use 1)

### 2. Input signal length :

Weight unit is kg , g , lb, tk . You can select transmitting string from "DATA FORMAT".

Data Fromat	Alphabetic string length
	000.000kg
Sep.NO.	1,000.000kg
PU	000.000,kg
Date	000.000kg,2007/3/26
Time	000.000kg,PM20:25:55
a+b+c+d+e	1,000.000,kg,2007/3/26,PM20:25:55

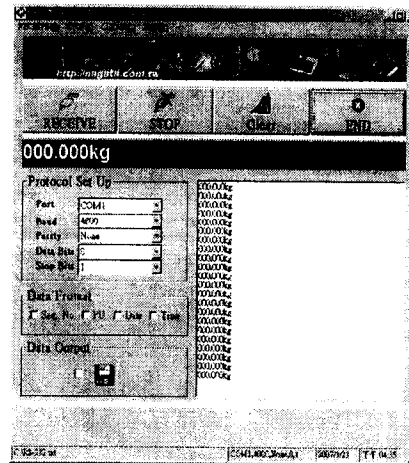
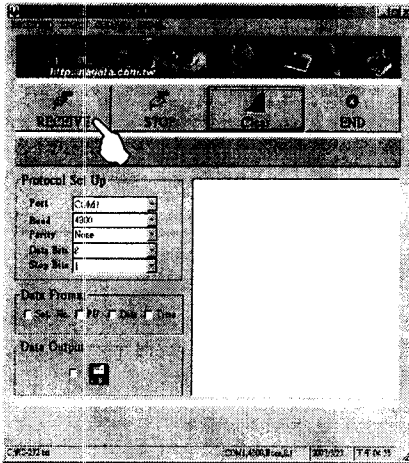


## [五] Communication connection :

### 1. Execute RS-232.exe

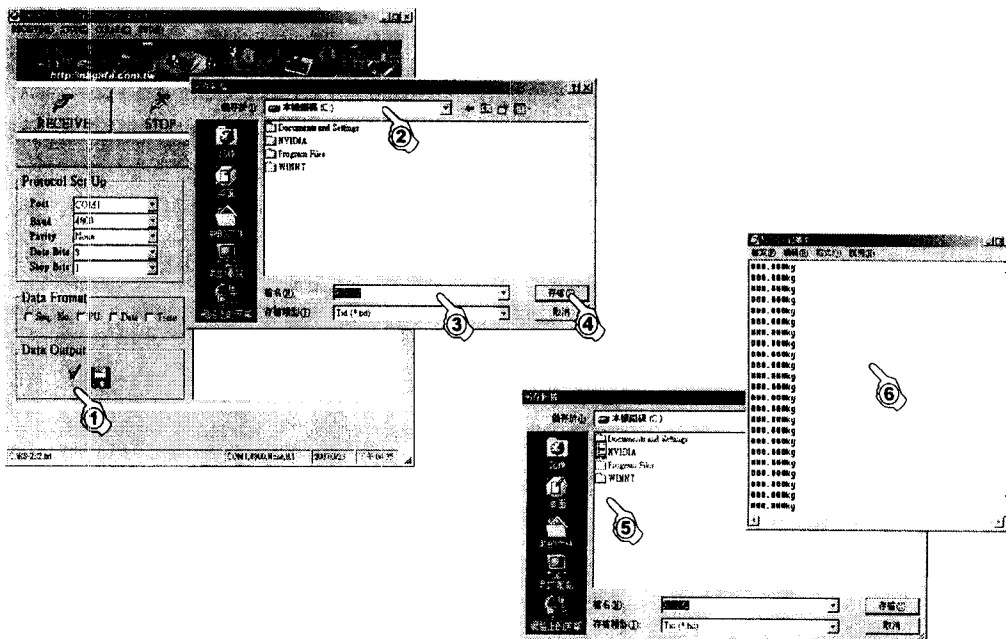
### 2. Start connection:

Click [RECEIVE].

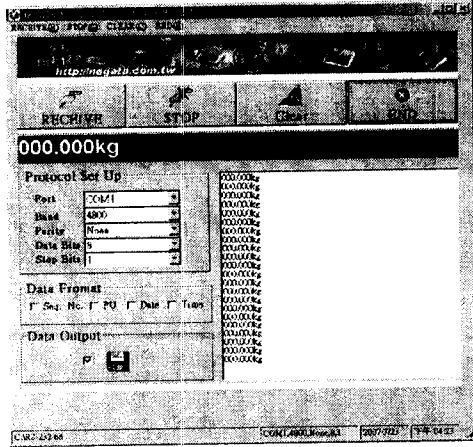


### 2. Setup data form [Data Output]:

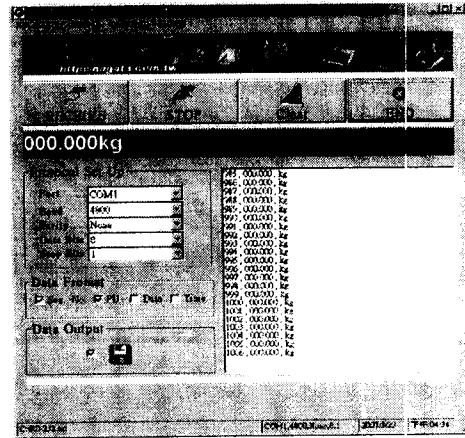
1. Click [Data Format]
- 2~4. Select storage rout
5. End connection and it will display (TxT) file automatically.
6. Open Txt. File to see the data record.



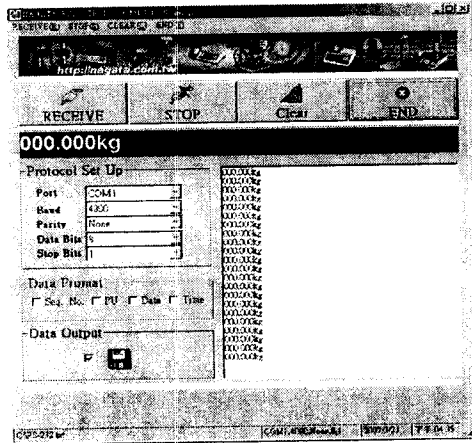
# [六] Data receiving screen show :



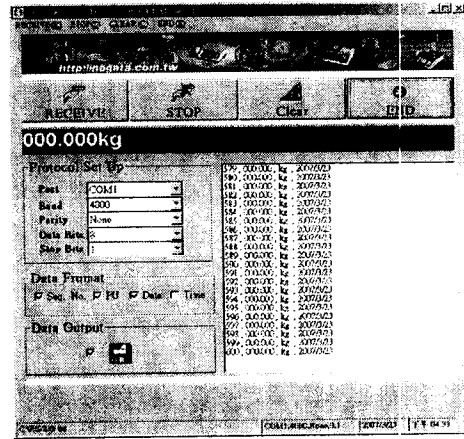
PU :



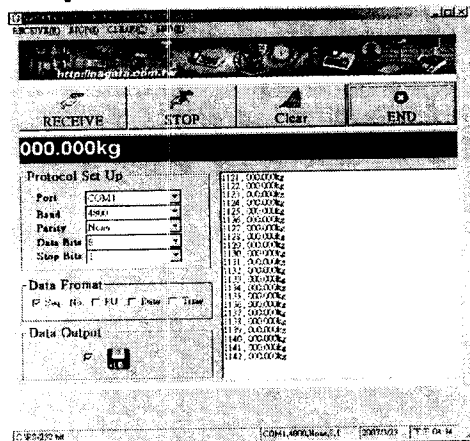
Data Fromat :



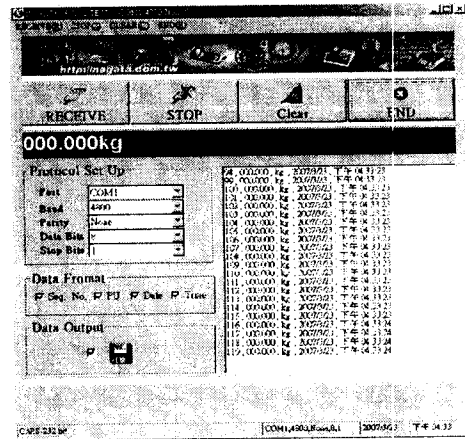
Date :



Seq.No. :



Time :





---

---

## [七] **Trouble shooting :**

### **No signal receiving :**

1. If the transmit cable connect to computer COM1 or COM2 ?
2. The setting of the inner baud rate of scale & baud rate of testing software are same or not ?