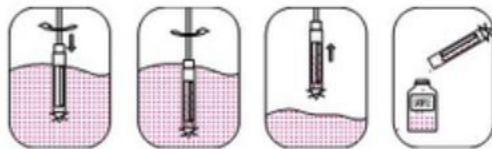
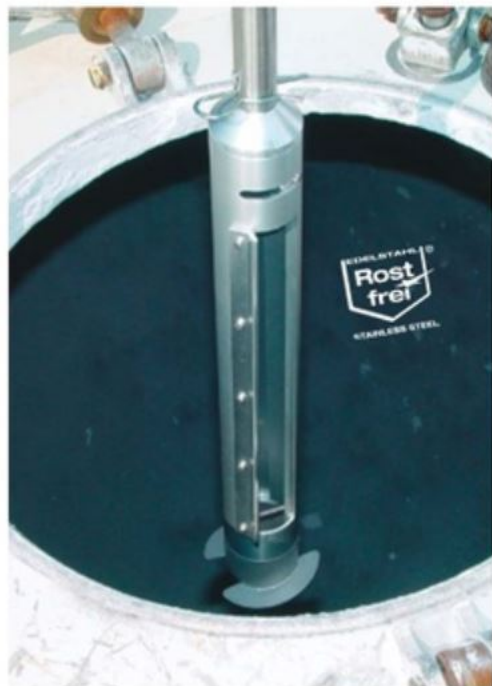


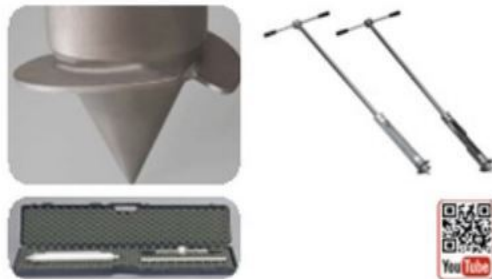
Samplers for silos



If bulk goods are transported over long distances (in trucks, railway goods wagons), separation may occur. Taking the sample just from the surface therefore leads to the wrong result. Representative samples from all layers of the silo can be taken with the SiloDrill. The SiloDrill fits through all standard openings with its diameter of 90 mm.



- ▶ Of stainless steel AISI 304 (1.4301) or aluminium
- ▶ Standard length 150 cm, extendable in increments of 100 cm, max. 350 cm
- ▶ Sprung inner tube prevents jamming of coarse grains
- ▶ Scraper edge for cohesive substances
- ▶ Sturdy, removable T-handle
- ▶ Drill tip with drilling blades for easy boring
- ▶ Easy removal of the sample chamber, simple cleaning



SiloDrill					
Material	Total length cm	Spiral screw dia. mm	Chamber dia. mm	Volume ml	Item no.
aluminium	150	90	40	400	5301-1000 N4
AISI 304	150	90	40	400	5301-2000 N4

Accessories	
Description	Item no.
SiloDrill extension AISI 304, 100 cm	5301-0500 N4
Transport case LxWxH 123x25x11 cm	3600-2120 N4

Silo sampler SiloPicker



The SiloPicker is ideal for taking bulk goods samples from silos. Using the extension rods, samples can be taken from depths down to 350 cm. The insertion depth depends on the density of the bulk goods.

- ▶ Stainless steel AISI 316L (1.4404)

Use

1. Insert SiloPicker into the bulk goods. When this is done, the closure sleeve automatically closes the collection container.
2. When the sampling depth has been reached, the closure sleeve is opened by gently pulling back the SiloPicker, the sampling container is filled.
3. Pull out the SiloPicker and empty it.



Silo sampler SiloPicker			
Chamber volume ml	Length cm	Outer dia. mm	Item no.
100	130	50	5340-1100 N4

Accessories	
Description	Item no.
SiloPicker extension 50 cm	5380-0508 N4
SiloPicker extension 100 cm	5380-1008 N4
Transport case LxWxH 123x25x11 cm	3600-2120 N4