



FORMULATING SUCCESS

COMPREHENSIVE TESTING SOLUTIONS FOR FEED MILLERS



BALANCING COST AND QUALITY

Feed milling today is a complex business, and agribusinesses both large and small need to balance the nutritional and safety needs of livestock with availability of raw ingredients and their seasonality and variability. Add to that the valuable supplementation and medication that millers supply, and it's clear: you're creating a complete nutritional delivery system, not just a simple mix of grains.

Of course, ensuring the feed you deliver is safe, nutritious, and cost-effective means testing across the entire feed milling process. That includes:

- Ingredient screening
- Process monitoring
- Finished feed nutrition and safety

With decades of experience in the grain and feed industries, we're uniquely positioned to help millers every step of the way. We deliver the instrumentation, software, methods, and analysis tools you need, as well as deep-seated knowledge of the challenges of balancing safety and nutritional value in a changeable ingredients marketplace.



INGREDIENT SCREENING

► Finished Feed Verification

KNOW WHAT'S IN YOUR FEED

Feed is based on agricultural products, which are seasonal and highly variable. So sourcing your ingredients and screening them for nutrition, composition, functionality, and safety are critical first steps in the milling process.

We deliver the tools, technologies, and know-how to help you screen your ingredients for these important characteristics by enabling you to:

Monitor Suppliers

Commodities are purchased on specifications such as protein, oil, moisture levels, and more – and you want to pay for what you receive, not simply what your contract specifies. Our solutions enable you to identify low-quality or unsafe materials and keep them from entering your mill.

Bin/Segregate

Today's millers want to deliver real nutritional value to their customers – and our solutions help you optimize your product value by taking advantage of the highest quality material on the market and segregating them out.

Make Better Formulations

With raw ingredients, there's considerable variation in energy and protein from shipment to shipment. Your results can be used to identify high-quality material for optimal use and to inform decision making for least-cost formulations.



NUTRITION COMES FIRST

Grains make up a significant portion of livestock dietary consumption, so ensuring proper nutritional content and digestibility are important aspects of grain milling for feed. The way to success is have complete knowledge of the nutritional value of your raw materials, enabling on-the-spot decision making in the face of market variability.

Our solutions for feed millers ensure fast, reliable testing for moisture, protein, fat, fiber, ash, and more in as little as 10 seconds – a key issue in ensuring least-cost formulations that meet customer needs.

Click on images for details.



Aquamatic™ 5200

This grain moisture meter delivers accurate testing for moisture, temperature, and density (HLW/TW) in under 10 seconds.

INGREDIENT SCREENING

► Finished Feed Verification

NUTRITION COMES FIRST

Grains make up a significant portion of livestock dietary consumption, so ensuring proper nutritional content and digestibility are important aspects of grain milling for feed. The way to success is have complete knowledge of the nutritional value of your raw materials, enabling on-the-spot decision making in the face of market variability.

Our solutions for feed millers ensure fast, reliable testing for moisture, protein, fat, fiber, ash, and more in as little as 10 seconds – a key issue in ensuring least-cost formulations that meet customer needs.

Click on images for details.



Inframatic™ 9500

Whether you're at the receiving area or in the lab, this whole-grain analyzer with multiple official approvals delivers exceptional accuracy for simultaneous measurement of moisture, protein, oil, and more.

INGREDIENT SCREENING

► Finished Feed Verification

NUTRITION COMES FIRST

Grains make up a significant portion of livestock dietary consumption, so ensuring proper nutritional content and digestibility are important aspects of grain milling for feed. The way to success is have complete knowledge of the nutritional value of your raw materials, enabling on-the-spot decision making in the face of market variability.

Our solutions for feed millers ensure fast, reliable testing for moisture, protein, fat, fiber, ash, and more in as little as 10 seconds – a key issue in ensuring least-cost formulations that meet customer needs.

Click on images for details.



FT 9700™

Just the thing for ground grain and ingredients, it analyzes for moisture, protein, oil, and more in about a minute. Plus, its extended wavelength range is perfect for challenging applications such as amino acid and fatty acid profiles.

INGREDIENT SCREENING

► Finished Feed Verification

NUTRITION COMES FIRST

Grains make up a significant portion of livestock dietary consumption, so ensuring proper nutritional content and digestibility are important aspects of grain milling for feed. The way to success is have complete knowledge of the nutritional value of your raw materials, enabling on-the-spot decision making in the face of market variability.

Our solutions for feed millers ensure fast, reliable testing for moisture, protein, fat, fiber, ash, and more in as little as 10 seconds – a key issue in ensuring least-cost formulations that meet customer needs.

Click on images for details.



DA 7250™

This versatile, easy-to-use whole-grain and ingredient analyzer tests for moisture, oil, fiber, and more in 10 seconds, with little or no sample prep.

INGREDIENT SCREENING

► Finished Feed Verification

NUTRITION COMES FIRST

Grains make up a significant portion of livestock dietary consumption, so ensuring proper nutritional content and digestibility are important aspects of grain milling for feed. The way to success is have complete knowledge of the nutritional value of your raw materials, enabling on-the-spot decision making in the face of market variability.

Our solutions for feed millers ensure fast, reliable testing for moisture, protein, fat, fiber, ash, and more in as little as 10 seconds – a key issue in ensuring least-cost formulations that meet customer needs.

Click on images for details.



DA 7350™

Our in-process analyzer provides continuous measurement for process monitoring and control, measuring moisture, protein, oil, and more on incoming materials in pipes and at transitions points. Use the results to know what's in your bins and to segregate if bin space is available.

INGREDIENT SCREENING

► Finished Feed Verification

IN PURSUIT OF QUALITY

Grains and their derivatives may have functional requirements not solely dependent on composition, but also on energy input and how they perform in a mixture of ingredients.

Our solutions can be used to test starch sources to make certain that pellet quality and durability are maintained, and can measure characteristics such as starch pasting, gelatinization, and more, reducing extruder waste and speeding product changeovers.



Rapid Visco Analyzer™

This unique system measures performance by subjecting a sample to a reproducible cycle of temperature and shear. The RVA measures how broken down or cooked a starchy sample is relative to other samples of the same type, for an easy, descriptive way to help measure digestibility.

INGREDIENT SCREENING

► Finished Feed Verification

HOW SAFE IS YOUR FEED?

Grains are generally considered a safe food source, but there are conditions and substances that can adversely affect feed ingredients. So it's critical that you ensure your feed is safe from natural, unintentional, and intentional compromise.

At Receiving

Produced by mold, mycotoxins are some of the most carcinogenic substances known to science. They're also hardy, making it critically important to keep them from entering the food supply. That means testing both in the field and at the elevator.

In the Lab

In addition to mycotoxins, metals and other minerals can find their way into your feed formulations. Our solutions enable you to perform simple, fast testing for these compounds in anything from grains to meat meals to supplements and additives.

Click on images for details.



PinAAcle® 900 Series AA

Available in flame, furnace, or combination models, PinAAcle instruments offer exactly the level of performance you need with the smallest footprint of any combined flame/ graphite furnace AA system on the market.

INGREDIENT SCREENING

► Finished Feed Verification

HOW SAFE IS YOUR FEED?

Grains are generally considered a safe food source, but there are conditions and substances that can adversely affect feed ingredients. So it's critical that you ensure your feed is safe from natural, unintentional, and intentional compromise.

At Receival

Produced by mold, mycotoxins are some of the most carcinogenic substances known to science. They're also hardy, making it critically important to keep them from entering the food supply. That means testing both in the field and at the elevator.

In the Lab

In addition to mycotoxins, metals and other minerals can find their way into your feed formulations. Our solutions enable you to perform simple, fast testing for these compounds in anything from grains to meat meals to supplements and additives.

Click on images for details.



NEXION 2000 ICP-MS

NexION® 2000 ICP-MS

The most versatile ICP-MS available, the NexION 2000 features an array of unique technologies and innovations that combine to deliver the highest performance to laboratories, regardless of your analytical challenge.

INGREDIENT SCREENING

► Finished Feed Verification

HOW SAFE IS YOUR FEED?

Grains are generally considered a safe food source, but there are conditions and substances that can adversely affect feed ingredients. So it's critical that you ensure your feed is safe from natural, unintentional, and intentional compromise.

At Receival

Produced by mold, mycotoxins are some of the most carcinogenic substances known to science. They're also hardy, making it critically important to keep them from entering the food supply. That means testing both in the field and at the elevator.

In the Lab

In addition to mycotoxins, metals and other minerals can find their way into your feed formulations. Our solutions enable you to perform simple, fast testing for these compounds in anything from grains to meat meals to supplements and additives.

Click on images for details.



Avio® 200 ICP-OES

The smallest ICP on the market, the Avio 200 ICP-OES offers the most efficient operation, reliable data, and lowest cost of ownership by delivering the lowest argon consumption of any ICP, the fastest ICP startup, superior sensitivity and resolution for all elements of interest, and the widest linear range with dual viewing technology.

INGREDIENT SCREENING

► Finished Feed Verification

HOW SAFE IS YOUR FEED?

Grains are generally considered a safe food source, but there are conditions and substances that can adversely affect feed ingredients. So it's critical that you ensure your feed is safe from natural, unintentional, and intentional compromise.

At Receival

Produced by mold, mycotoxins are some of the most carcinogenic substances known to science. They're also hardy, making it critically important to keep them from entering the food supply. That means testing both in the field and at the elevator.

In the Lab

In addition to mycotoxins, metals and other minerals can find their way into your feed formulations. Our solutions enable you to perform simple, fast testing for these compounds in anything from grains to meat meals to supplements and additives.

Click on images for details.



AuroFlow™ Test Strips

These water-based extraction, quantitative total aflatoxin test strips are certified USDA FGIS 2019-121 compliant.

INGREDIENT SCREENING

► Finished Feed Verification

COMPLETE SOLUTIONS FROM INTAKE TO LOADOUT

Our solutions cover every step of the feed milling process, enabling you to ensure nutrition, quality, and safety across your operation. And that means better formulations, less rework – and satisfied customers.

Ingredient Intake

- Identify bad ingredients before they enter
- Screen for out-of-spec and make claims against suppliers
- Optimize use of ingredients in formulation

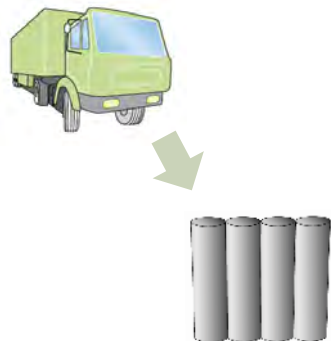
SOLUTIONS:

Moisture Meter – Moisture of incoming grains

NIR – Proximates (moisture, protein, oil, fiber)

Auroflow LF Kits – Mycotoxins

RVA – Functionality of starches for extruded and pelletized products



In the Mill

Process Monitoring:

- Early problem detection
- Maximize ingredient use
- Reduce waste, re-work, labor, and energy use

SOLUTIONS:

Mill and Mixer/Conveyor - NIR –

Proximates – Monitor milling and mixing

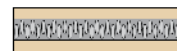
Pelletizer - RVA – Test after the pelletizer

to measure starch conversion for digestibility

Fat Addition – NIR - Verify fat levels



Mill



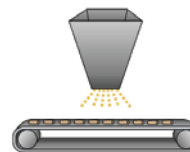
Mixer



Pelletizer



Cooler



Fat Addition

Loadout

Verifying Quality and Safety:

Avoid delivering out-of-spec feed • Brand protection

SOLUTIONS:

NIR – Proximates of finished feeds

AuroFlo LF Kits – Mycotoxins

AA or ICP-OES - Minerals



FROM FIELD TO FINISHED PRODUCT, EVERYTHING JUST WORKS

With the growth in population and meat consumption worldwide, the need for feed is keeping pace. Research continues to identify key nutritional requirements for specific animals, necessitating supplements and medicines to support health and well-being. And least-cost formulations continue to drive the industry, with the push to take advantage of nutrition and value wherever you can find them.

With process monitoring, you get real-time ingredient and product knowledge, so you can detect process and quality issues that much sooner – and that means reduced scrap, less rework, and better quality feed, together with the ability to make last-minute adjustments by verifying the exact contents of your mixer. And it provides you with a complete record of your entire production batch, so you don't have to rely on spot checks and guesswork. For larger operations, you'll have remote, real-time views of ingredients and feed results at multiple mills.



IN-LINE, AT-LINE, ONLINE: SOLUTIONS THAT KEEP MILLS GRINDING

Our lab/at-line instruments are extremely versatile, ideal for everything from incoming ingredients to processed samples and finished products. Grains, pellets, powders, slurries, and liquids can all be analyzed on a single instrument, too. They're accurate, simple to install and use, and provide millers the critical monitoring information they need to optimize processing decisions.

Click for more details about lab and at-line systems.



DA 7250™ At-line NIR

This system tests samples for moisture, protein, fat, and ash – with little or no sample preparation – in less than 10 seconds. Simply pour the sample in the open-faced dish, strike any excess, place it in the instrument, and press the analyze button. Results are displayed and stored automatically.

INGREDIENT SCREENING

IN-LINE, AT-LINE, ONLINE: SOLUTIONS THAT KEEP MILLS GRINDING

Our lab/at-line instruments are extremely versatile, ideal for everything from incoming ingredients to processed samples and finished products. Grains, pellets, powders, slurries, and liquids can all be analyzed on a single instrument, too. They're accurate, simple to install and use, and provide millers the critical monitoring information they need to optimize processing decisions.

Click for more details about lab and at-line systems.



FT 9700

FT 9700™

Just the thing for ground grain and ingredients, it analyzes for moisture, protein, oil, and more in about a minute. Plus, its extended wavelength range is perfect for challenging applications such as amino acid and fatty acid profiles.

INGREDIENT SCREENING

IN-LINE, AT-LINE, ONLINE: SOLUTIONS THAT KEEP MILLS GRINDING

Our in-line and online process monitoring instruments are typically installed in the process line – on a mixer, in a pipe, or at a transition point – and can send results to the process control system for continuous product optimization, while similar over-the-belt noncontact systems are ideal for applications such as measuring for moisture after the drying process.

Click for more details about online and in-line systems.



DA 7350

DA 7350™ In-line NIR

This NIR process sensor provides continuous, real-time multicomponent monitoring. The instrument and results are readily integrated into process control systems for automated or manual adjustment. The integrated camera provides a clear view into your processes and can even provide analyses such as speck count. You can mount the system at transition points, mixer, and blend setups, after dryers, and at loadout.

INGREDIENT SCREENING

IN-LINE, AT-LINE, ONLINE: SOLUTIONS THAT KEEP MILLS GRINDING

Our in-line and online process monitoring instruments are typically installed in the process line – on a mixer, in a pipe, or at a transition point – and can send results to the process control system for continuous product optimization, while similar over-the-belt noncontact systems are ideal for applications such as measuring for moisture after the drying process.

Click for more details about online and in-line systems.



DA 7440

DA 7440™ Online NIR

This advanced, versatile online NIR sensor for over-the-belt measurements performs real-time multiconstituent measurements such as moisture, fat, sugars, protein, starch, and fiber on a processing line. Core diode-array technology provides durability, stability, and accurate measurement of moving products, as well as the ability to track process changes.

INGREDIENT SCREENING

BETTER FEED, FROM FARM TO STABLE

Because feed is targeted to meet specific purposes, it's vitally important that finished feed be tested to ensure it meets all the requirements of the animals it sustains. Our solutions enable you to test for parameters such as composition and function, including rapid proximate analysis and verification of amino acid content, as well as critical safety-related analyses.

Click below to learn more.

- ▶ [Proximates](#)
- ▶ [Pesticides](#)
- ▶ [Amino Acids](#)
- ▶ [Vitamins](#)
- ▶ [Mycotoxins](#)
- ▶ [Minerals and Metals](#)

Proximates

Grains and grain derivatives are key ingredients in animal feed, which are often least-cost formulated based on the prices of protein sources. This creates the risk of suboptimal nutrition, as different animals require varying nutritional content, and those values can change as the animal ages. Grain companies using our **DA 7250**, **DA 7350**, and **DA 7440 NIR** systems to leverage this information can gain a significant advantage in the marketplace.

▶ Finished Feed Verification

BETTER FEED, FROM FARM TO STABLE

Because feed is targeted to meet specific purposes, it's vitally important that finished feed be tested to ensure it meets all the requirements of the animals it sustains. Our solutions enable you to test for parameters such as composition and function, including rapid proximate analysis and verification of amino acid content, as well as critical safety-related analyses.

Click below to learn more.

- ▶ [Proximates](#)
- ▶ [Pesticides](#)
- ▶ [Amino Acids](#)
- ▶ [Vitamins](#)
- ▶ [Mycotoxins](#)
- ▶ [Minerals and Metals](#)

Pesticides

With the increase in the type and amount of pesticides we're using, there's more health risk due to consumption of pesticide residues. Pesticides can leach into soil and groundwater, too, leading to adverse impacts on people and the environment. To keep up with changing regulations, our **QSight® Pesticide Analyzer** can help you keep pace with your growing sample load.

▶ Finished Feed Verification

BETTER FEED, FROM FARM TO STABLE

Because feed is targeted to meet specific purposes, it's vitally important that finished feed be tested to ensure it meets all the requirements of the animals it sustains. Our solutions enable you to test for parameters such as composition and function, including rapid proximate analysis and verification of amino acid content, as well as critical safety-related analyses.

Click below to learn more.

- ▶ [Proximates](#)
- ▶ [Pesticides](#)
- ▶ [Amino Acids](#)
- ▶ [Vitamins](#)
- ▶ [Mycotoxins](#)
- ▶ [Minerals and Metals](#)

Amino Acids

Amino acids help animals synthesize proteins, while playing an important role in other metabolic and biochemical processes. So it's critical that your feed provides the essential amino acids that animals can't make by themselves. Our **Clarus**® series of GC instruments provides analysis of amino acid ingredient profiles, finished feeds, and supplements, helping ensure your products meet animals' nutritional requirements.

▶ Finished Feed Verification

BETTER FEED, FROM FARM TO STABLE

Because feed is targeted to meet specific purposes, it's vitally important that finished feed be tested to ensure it meets all the requirements of the animals it sustains. Our solutions enable you to test for parameters such as composition and function, including rapid proximate analysis and verification of amino acid content, as well as critical safety-related analyses.

Click below to learn more.

- ▶ [Proximates](#)
- ▶ [Pesticides](#)
- ▶ [Amino Acids](#)
- ▶ [Vitamins](#)
- ▶ [Mycotoxins](#)
- ▶ [Minerals and Metals](#)

Vitamins

Vitamins are essential nutrients for animal health and are naturally present in food or added as supplements in feed. Our robust **LC 300** systems are easy to operate and perfect for routine analysis of fat-soluble and water-soluble vitamins.

BETTER FEED, FROM FARM TO STABLE

Because feed is targeted to meet specific purposes, it's vitally important that finished feed be tested to ensure it meets all the requirements of the animals it sustains. Our solutions enable you to test for parameters such as composition and function, including rapid proximate analysis and verification of amino acid content, as well as critical safety-related analyses.

Click below to learn more.

- ▶ [Proximates](#)
- ▶ [Pesticides](#)
- ▶ [Amino Acids](#)
- ▶ [Vitamins](#)
- ▶ [Mycotoxins](#)
- ▶ [Minerals and Metals](#)

Mycotoxins

Mycotoxins are metabolites produced by mold. They're hardy as well as dangerous and can be found in highly concentrated levels in many grain byproducts. For simple mycotoxin screening, check out our water-based-extraction **Auroflow™ Lateral Flow test strips**. For high-volume screening, use our **MaxSignal™ ELISA kits** and add automation for even higher throughput. The **LC 300** and **QSight** instruments are also used for quantification of mycotoxins to minute levels with high selectivity.

▶ Finished Feed Verification

BETTER FEED, FROM FARM TO STABLE

Because feed is targeted to meet specific purposes, it's vitally important that finished feed be tested to ensure it meets all the requirements of the animals it sustains. Our solutions enable you to test for parameters such as composition and function, including rapid proximate analysis and verification of amino acid content, as well as critical safety-related analyses.

Click below to learn more.

- ▶ [Proximates](#)
- ▶ [Pesticides](#)
- ▶ [Amino Acids](#)
- ▶ [Vitamins](#)
- ▶ [Mycotoxins](#)
- ▶ [Minerals and Metals](#)

Minerals and Metals

As the leader in inorganic analysis, we deliver testing for metals and minerals – whether you need on-the-spot checking for a few metals or in-depth testing for elemental composition at extreme detection levels. Our **PinAAcle® AA** instruments are rugged, simple to use, and ideal for quick spot analysis. For more rigorous testing, our **Avio® ICP-OES** systems can handle complex matrices. And for ultimate performance, including speciation, trust our **NexION® ICP-MS** instruments.

▶ Finished Feed Verification

THE SCIENCE OF INTEGRATED AGRIBUSINESS

For many agriculturally focused businesses, feed milling is part of a larger concern that can include meat, dairy, and egg production and a whole lot more. Our solutions cover the entire production chain, helping you integrate operations and standardize around scientific principles and practices.

Animal Husbandry

Ensuring animal health and well-being is key to profitability. We help you test feed for nutrition and safety for all stages of animal development. What's more, you can analyze manure to detect nonoptimal performance and effects of disease or deliver *in vitro* testing for veterinary residues.

Meat Processing

Meat and meat products and byproducts can be analyzed with our extensive set of rapid testing solutions and analytical instruments. We have workflows and solutions for proximates, pathogens, toxins, veterinary residues, and much more.

Rendering

Rendering is an important part of the carcass-disposal process. Rendered products, including greases and tallows, have a variety of industrial uses and are test for properties such as FFAs and iodine value, while solid materials are tested for moisture, protein, ash, and pathogens. Other rendered materials, such as meat and feather meals, make excellent sources of nutrition. Our solutions help you monitor and optimize the rendering process for safety, efficiency, and best use of materials.

SOLUTIONS AT A GLANCE

Our solutions cover the entire feed milling process – from intake to process monitoring to final verification, enabling testing for safety, composition, and functionality. Click below for a quick overview.

	Moisture	Proximates	Amino Acids	Mycotoxins	Vitamins	Minerals and Metals	Pesticides	Functionality
Aquamatic 5200	S							
Informatic 9500	S	S						
FT 9700	S	SPV	SPV					
DA 7250	SPV	SPV						
DA 7350	SPV	SPV						
DA 7440	SPV	SPV						
Rapid Visco® Analyzer								SPV
AuroFlow AQ LF Kits				S				
MaxSignal™ Mycotoxin ELISA Kits				SV				
LC 300			V	V	V		V	
Clarus GC			V					
Clarus SQ 8 GC/MS							V	
QSight LC/MS			V	V	V		V	
PinAAcle AA						SV		
Avio ICP-OES						V		
NexION ICP-MS						V		

S = Screen, P = Process, V=Verify

INGREDIENT SCREENING

► Finished Feed Verification



SOFTWARE MAKES THE SOLUTION

Software is the glue that holds a solution together. With data analysis, data reporting, electronic lab notebooks, and so much more, our software helps you get the most out of your instrumentation – and your grain and feed analysis solution.

NetPlus

Our web-based NetPlus™ software suite provides access wherever you are, so you can monitor your results and configure your NIR instruments from anywhere, any time. NetPlus Reports lets you check up on production, verify quality of ingredient shipments, get updates on latest analyses, and see results in tables and charts on your laptop. Whether you manage one instrument or a hundred, NetPlus Remote streamlines your tasks.

Electronic Lab Notebooks

Our electronic lab notebooks facilitate the make/test/decide workflow common to virtually all scientific disciplines. ELNs provide the central framework for record keeping, collaboration, and the data for insights from integrated tools, including Signals™ Lead Discovery, Signals™ Screening, and TIBCO Spotfire®.

LimsLink

A laboratory-integration solution that reduces errors and costs associated with manual data management by ensuring that results and sample information are accurately and efficiently transferred in real time between instruments, instrument data systems, and informatics systems such as LIMS, ELN, LES, SDMS, DMS, SAP, and more.

SERVICES FOR INCREASED PRODUCTIVITY AND EFFICIENCY

With deep industry knowledge, our OneSource teams can address your lab requirements to help optimize your business outcomes, delivering everything from everyday instrument repair to data integrity services.

- ▶ [Asset Services](#)
- ▶ [Information Services](#)
- ▶ [Analytics Platform](#)
- ▶ [Information Services/
Lab Computing](#)
- ▶ [Relocation Services](#)
- ▶ [Compliance Services](#)
- ▶ [Multivendor Services](#)

Asset Services

Whether your goal is resource optimization or standardization of vendors and processes, OneSource Asset Services can bring your asset management activities to the next level, providing a constant view of how your instrumentation is performing. And with advanced notification tools, you'll know exactly when it's time for maintenance and upgrades.

Asset Genius Monitoring Solution - This comprehensive solution includes intelligent wireless sensors that automatically measure temperature, humidity levels, and more, on a single platform. And by using state-of-the-art data analytics, Asset Genius Monitoring can give you essential information on equipment utilization.

OneSource Portal - Our services portal allows you to quickly generate a service request via your desktop or mobile app, view site-specific equipment data, review service requests, and access the interactive dashboard for analytics and reports.

INGREDIENT SCREENING

▶ Finished Feed Verification

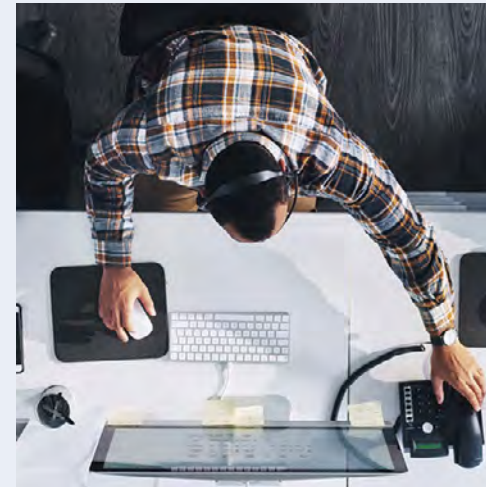
SERVICES FOR INCREASED PRODUCTIVITY AND EFFICIENCY

With deep industry knowledge, our OneSource teams can address your lab requirements to help optimize your business outcomes, delivering everything from everyday instrument repair to data integrity services.

- ▶ [Asset Services](#)
- ▶ [Information Services](#)
- ▶ [Analytics Platform](#)
- ▶ [Information Services/
Lab Computing](#)
- ▶ [Relocation Services](#)
- ▶ [Compliance Services](#)
- ▶ [Multivendor Services](#)

Information Services

Your information technology and scientific instrumentation need to work together seamlessly. Our Information Services experts bring global, multivendor, multisite expertise to your project. With a single point of accountability, we quickly get you engaged with the right personnel and the right skill sets in instrumentation, application software, operating systems, networking, and computing hardware, for fast problem resolution, via our training hubs and remote support.



▶ Finished Feed Verification

SERVICES FOR INCREASED PRODUCTIVITY AND EFFICIENCY

With deep industry knowledge, our OneSource teams can address your lab requirements to help optimize your business outcomes, delivering everything from everyday instrument repair to data integrity services.

- ▶ [Asset Services](#)
- ▶ [Information Services](#)
- ▶ [Analytics Platform](#)
- ▶ [Information Services/
Lab Computing](#)
- ▶ [Relocation Services](#)
- ▶ [Compliance Services](#)
- ▶ [Multivendor Services](#)

Analytics Platform

The OneSource InSite Analytics Platform provides insights and actionable data with interactive visualization tools and mobile applications that help optimize laboratory operations.



▶ Finished Feed Verification

SERVICES FOR INCREASED PRODUCTIVITY AND EFFICIENCY

With deep industry knowledge, our OneSource teams can address your lab requirements to help optimize your business outcomes, delivering everything from everyday instrument repair to data integrity services.

- ▶ [Asset Services](#)
- ▶ [Information Services](#)
- ▶ [Analytics Platform](#)
- ▶ [Information Services/ Lab Computing](#)
- ▶ [Relocation Services](#)
- ▶ [Compliance Services](#)
- ▶ [Multivendor Services](#)

Information Services/ Lab Computing

Our Lab Computing solutions infrastructure includes a knowledge base that connects our lab computing analysts around the world. Parameters include instrument inventory location/relocation; preventative maintenance and qualification documentation; firmware and software data information; workflow data for commissioning/decommissioning; new instrument onboarding; and IT safety, facility, and lab management user groups and workflow designees.



▶ Finished Feed Verification

SERVICES FOR INCREASED PRODUCTIVITY AND EFFICIENCY

With deep industry knowledge, our OneSource teams can address your lab requirements to help optimize your business outcomes, delivering everything from everyday instrument repair to data integrity services.

- ▶ [Asset Services](#)
- ▶ [Information Services](#)
- ▶ [Analytics Platform](#)
- ▶ [Information Services/
Lab Computing](#)
- ▶ [Relocation Services](#)
- ▶ [Compliance Services](#)
- ▶ [Multivendor Services](#)

Relocation Services

OneSource Relocation Services delivers turnkey, end-to-end solutions, lessening burden and risk with project managers and logistics professionals who can help with premove testing; labeling, dismantling, and packing; documentation support; qualification and protocol development; and system integration and application support.



▶ Finished Feed Verification

SERVICES FOR INCREASED PRODUCTIVITY AND EFFICIENCY

With deep industry knowledge, our OneSource teams can address your lab requirements to help optimize your business outcomes, delivering everything from everyday instrument repair to data integrity services.

- ▶ [Asset Services](#)
- ▶ [Information Services](#)
- ▶ [Analytics Platform](#)
- ▶ [Information Services/
Lab Computing](#)
- ▶ [Relocation Services](#)
- ▶ [Compliance Services](#)
- ▶ [Multivendor Services](#)

Compliance Services

With OneSource Compliance Services, you'll be meeting regulatory requirements companywide. Our OneSource Universal Operational Qualification (UOQ) framework delivers a harmonized, automated approach to testing, documentation, and compliance, streamlining processes across all major models of laboratory instrumentation, regardless of vendor. To ensure your lab and processes are compliant, our team can support data integrity assurance, paper-based qualifications, computer system validation, and regulatory submissions in compliance with AOAC standards.



▶ Finished Feed Verification

SERVICES FOR INCREASED PRODUCTIVITY AND EFFICIENCY

With deep industry knowledge, our OneSource teams can address your lab requirements to help optimize your business outcomes, delivering everything from everyday instrument repair to data integrity services.

- ▶ [Asset Services](#)
- ▶ [Information Services](#)
- ▶ [Analytics Platform](#)
- ▶ [Information Services/
Lab Computing](#)
- ▶ [Relocation Services](#)
- ▶ [Compliance Services](#)
- ▶ [Multivendor Services](#)

Multivendor Services

From preventive maintenance and repair to qualification, calibration, and laboratory relocation, we help you to optimize your operations and cost-effectively manage laboratory assets throughout their lifecycle.



▶ Finished Feed Verification

PerkinElmer, Inc.
940 Winter Street
Waltham, MA 02451 USA
P: (800) 762-4000 or
(+1) 203-925-4602
www.perkinelmer.com



For a complete listing of our global offices, visit www.perkinelmer.com/ContactUs

Copyright ©2020-2021, PerkinElmer, Inc. All rights reserved. PerkinElmer® is a registered trademark of PerkinElmer, Inc. All other trademarks are the property of their respective owners.