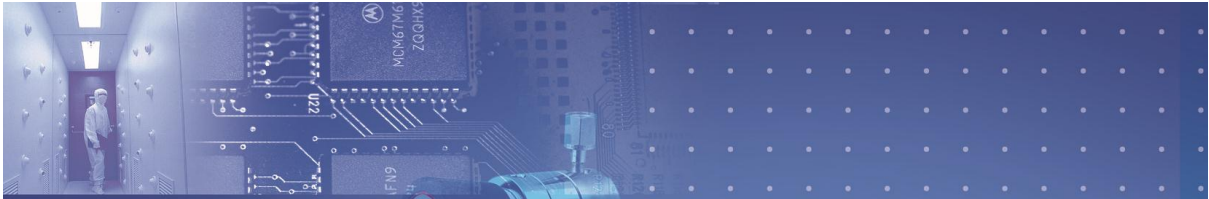




## تکنولوژی کنترل گاز و مایع با درا استار



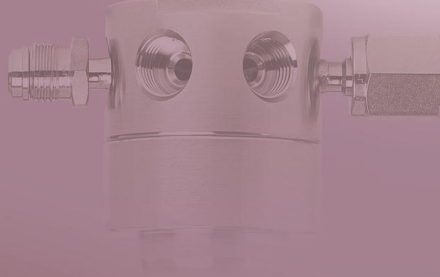


# DRA 100 S E R I E S

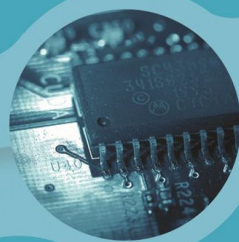




# DRA200 SERIES



# DRA 700 S E R I E S



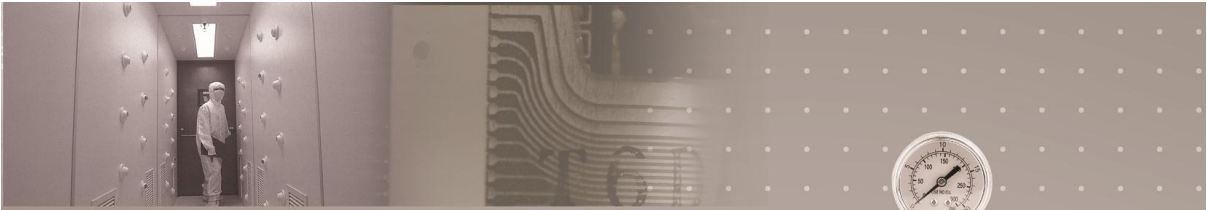


# 072 SERIES



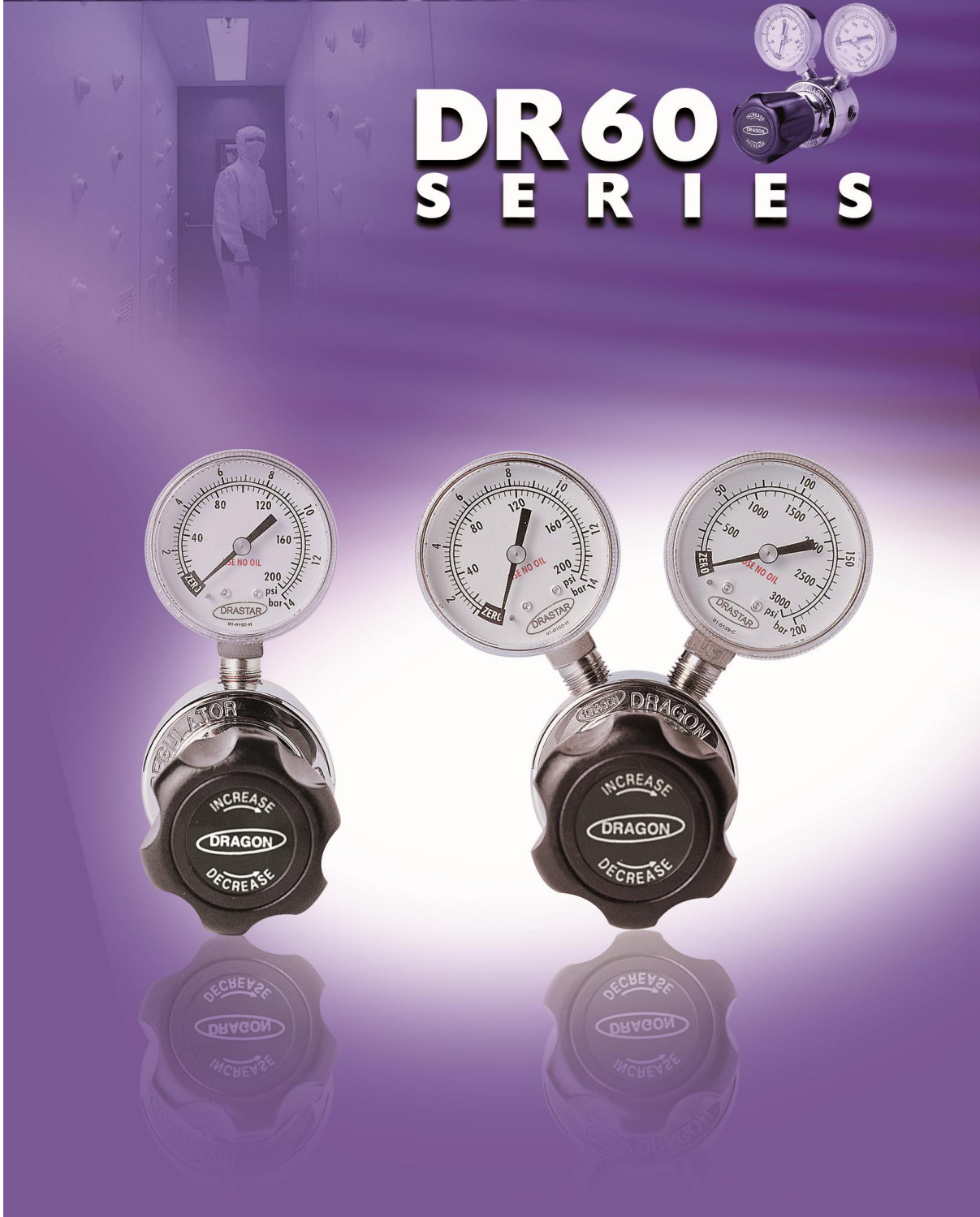
# 082 SERIES





# 092 SERIES

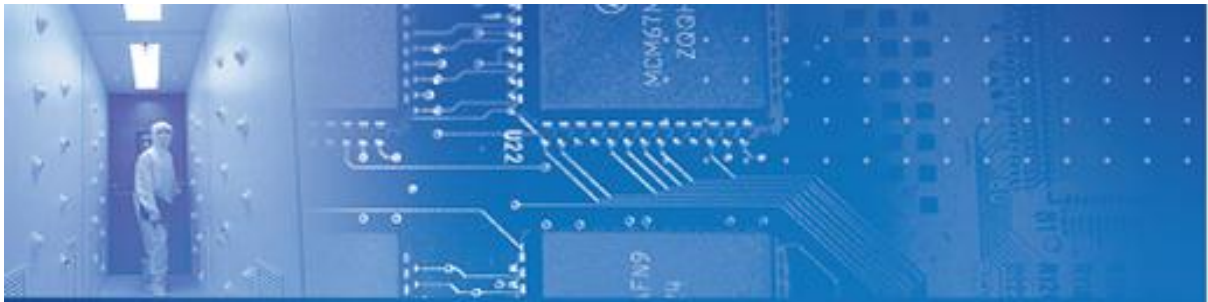




# DR60 SERIES







# DR70 SERIES





# 2000 S E R I E S



Two Stage Pressure Regulator





**847-15-L**

**Pipeline Regulator**

**Model 847-10-Ox 9/16"**

**Weld-Cut Part no. 6110487**

Max Inlet Pressure - 25 Bar

Delivery Pressure 0 - 10 Bar

**Model 847-15-Ox 9/16"**

**Weld-Cut Part no. 6110466**

Max Inlet Pressure - 25 Bar

Delivery Pressure 0 - 15 Bar

Available for Argon, CO<sub>2</sub>, Nitrogen, etc.



Model 801D-15-F-AR/CD 3/8"  
**Weld-Cut Part no. 6110432**  
Max Inlet Pressure - 23,000 kPa

**Argon / Co2**

Flow meter - 0 - 15 (L/m)



11

## Gas Equipment

### Model 896 Regulator

#### **Harris**

##### **Oxygen**

Model 896 D-1000-OX 1547 9/16"

**Weld-Cut Part no. 6110428**

Max Inlet Pressure - 23,000 kPa

Delivery Pressure - 0 - 1,000 kPa

##### **Acetylene:**

Model 896-1502-AC-1546 9/16"

**Weld-Cut Part no. 6110429**

Max Inlet Pressure - 2,500 kPa

Delivery Pressure - 0 - 150 kPa



## Harris

### **Oxygen**

Model 899 - 10 -OX 1547 9/16"

**Weld-Cut Part no. 6110434**

**(Pre-Set 6110436)**

Max Inlet Pressure - 23,000 kPa

Delivery Pressure - 0 - 800 kPa

### **Acetylene:**

Model 899-1.5-AC 1546 9/16"

**Weld-Cut Part no. 6110435**

**(Pre-Set 6110437)**

Max Inlet Pressure - 2,500 kPa

Delivery Pressure - 0 - 150 kPa



### **Oxygen**

Model 801 D-4-OX 3/8"

**Weld-Cut Part no. 6110430**

Max Inlet Pressure - 23,000 kPa

Delivery Pressure - 0 - 1,000 kPa

### **Acetylene:**

Model 801 B-1.5-AC 3/8"

**Weld-Cut Part no. 6110431**

Max Inlet Pressure - 2,500 kPa

Delivery Pressure - 0 - 150 kPa



Argon / Co2

Model 801D-15-F-AR/CD 3/8"

**Weld-Cut Part no. 6110432**

Max Inlet Pressure - 23,000 kPa

Flow meter - 0 - 15 (L/m)





## Oxygen

Model 825 D-1000-OX 3102 **3/8"**

**Weld-Cut Part no. 6110425**

Max Inlet Pressure - 23,000 kPa

Delivery Pressure - 0 - 1,000 kPa

**Acetylene:**

Model 825-1502-AC 3101 **3/8"**

**Weld-Cut Part no. 6110426**

Max Inlet Pressure - 2,500 kPa

Delivery Pressure - 0 - 150 kPa



**Harris**

**Oxygen**

Model 896 D-1000-OX 1547 **9/16"**

**Weld-Cut Part no. 6110428**

Max Inlet Pressure - 23,000 kPa

Delivery Pressure - 0 - 1,000 kPa

**Acetylene:**

Model 896-1502-AC-1546 **9/16"**

**Weld-Cut Part no. 6110429**

Max Inlet Pressure - 2,500 kPa

Delivery Pressure - 0 - 150 kPa