

## Key Operated Boiler Blowdown Valve

### Description

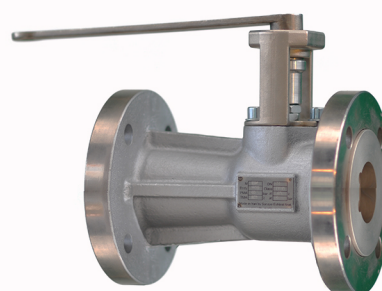
Designed for boiler blowdown applications.

The key cannot be removed when the valve is open, to ensure compliance with boiler regulations.

Operation : Manual , Actuator

Flanged connections.

spare parts are provided.



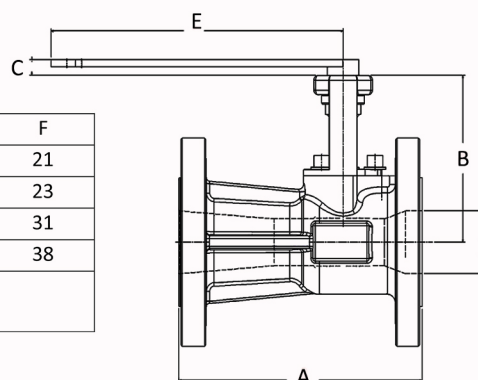
### Applications

SFV500 is specifically designed for :

boiler blowdown applications and where a timed blowdown system is not required.

### Sizes and pipe connections

Size	DN	A	B	C	E	F
1"	25	165	114	35	-	21
1-1/4"	32	178	117	35	-	23
1-1/2"	40	190	126	35	-	31
2"	50	216	134	35	-	38
Standard Key					258	



Dimensions are approximate and in mm.

Flange standard BS EN 1092, PN40

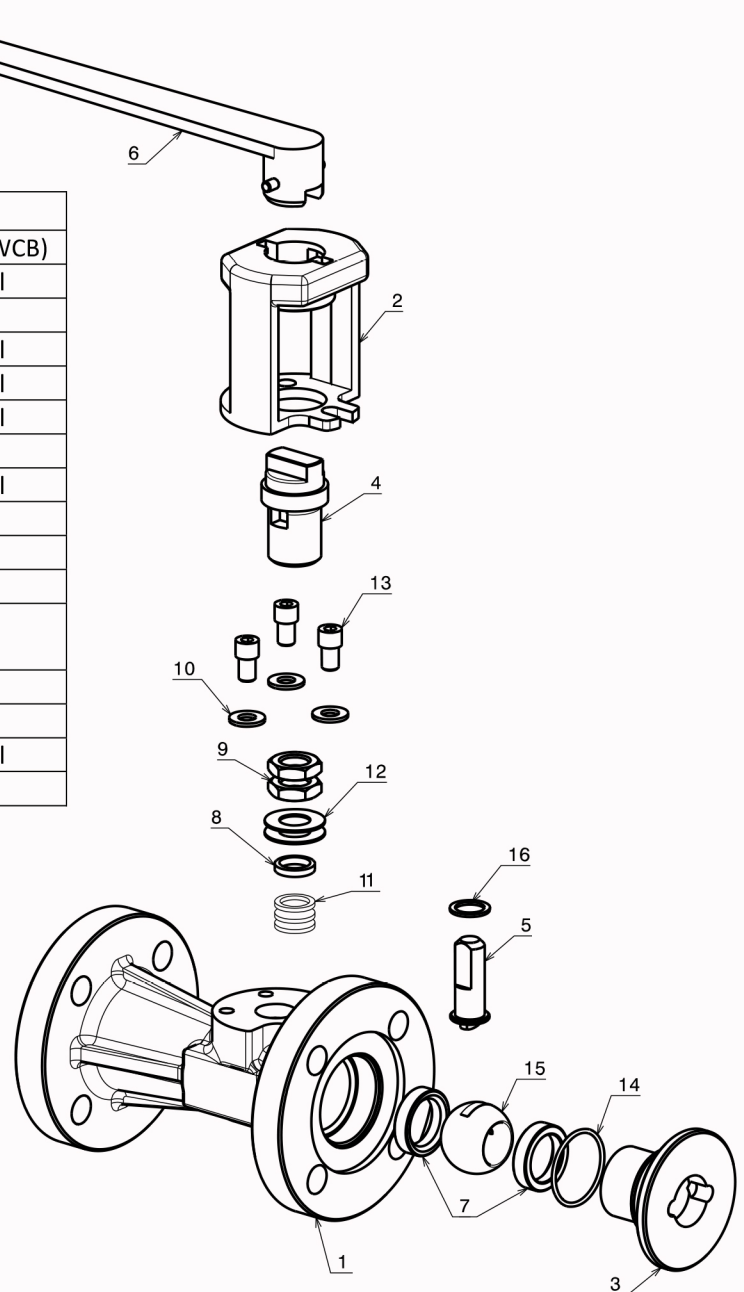
### Limiting Conditions

Max. allowable pressure	20 bar g
Cold hydraulic test pressure	60 bar g
Seat leakage test	6 bar g ( air under water )

## Key Operated Boiler Blowdown Valve

### Material

Num	Part name	Material
1	Body	Cast steel(A216-WCB)
2	Housing	Stainless steel
3	Inset	Alloy steel
4	Adaptor	Stainless steel
5	Stem	Stainless steel
6	Lever	Stainless steel
7	Seat	PTFE
8	Separator	Stainless steel
9	Hex. nut	Steel
10	Washer	Steel
11	Stem seal	PTFE
12	Conical spring washer	CK45
13	Socket heat (F.T.)	Steel
14	O-Ring	Viton
15	Ball	Stainless steel
16	Stem seal	PTFE



### How to order

BV 20

size : DN 25,32,40,50

working pressure & temperature (barg),(C)

flange standard BS EN 1092, PN 40