



DELSO

SUZHOU DELSO CO.,LTD

Add: #108 XiaoKangYuan, Sujin Er Cun, Suzhou,
215008, China
Tel: 0086-512-55106386
Fax: 0086-512-67219085
Email: info@delso.com.cn
Web: www.delso.cn

SUZHOU DELSO CO.,LTD.
Elevator, Escalator and Passenger Conveyor

DELSO



DELSO

COMPANY PROFILE >>

SUZHOU DELSO CO., LTD. Is a professional manufacturer with 20 years experience in manufacturing Elevator, Escalator and Passenger Conveyor and Spare parts. We adopt the German advanced technology and administrative system, and strictly implement the European standards:EN115 & EN81.

DELSO products have been exported more than 40 countries, such as Germany, France, United States, Indonesia, Jordan, Italy, U.A.E, Malaysia, Bangladesh, Portugal, etc. DELSO has finished many famous projects such as Koin Subway Station in Germany, Milan International Airport in Italy and Paris Subway Station in France with good reputation.



ESCALATOR

DEL F series escalators: DELC (commercial type), DELS (slim-line type), DELH (heavy-duty type) utilize the most advanced control technology and have the perfect function and reliable stabilization. They are convenient for maintenance and the graceful and easy figure can be applicable to various structure styles.



PASSENGER CONVEYOR

DEL P series passenger conveyors: DELHP (horizontal type), DELPI (inclined type) and DELPC (compact type) utilize the most advanced control technology and have the perfect function and reliable stabilization. They are convenient for maintenance. Standing on them make you enjoy shopping, traveling, etc.



DELSO Escalator
Material

> 05
PAGE

> The Material of Inner and Outer Decking and Skirting

Comfort and Noble are the most light spot of DELSO escalator based on the stability and safet.



Hairline finished
Stainless Steel



Hairline Teflon
Finished
Stainless Steel



Skirting with Hairline Stainless Steel

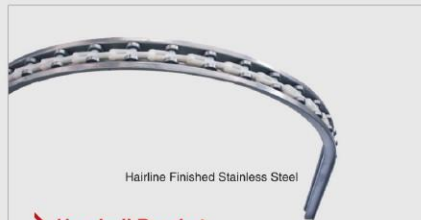


Skirting with the Hairline Teflon
Finished Stainless Steel

> Anti-Creeping Device



> Skirting Brush



Hairline Finished Stainless Steel

> Handrail Bracket

> Handrail Color Option



Black



Red



Orange



Light brown



Shlow bluish green



Blue

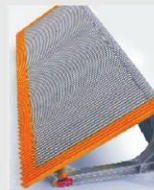


Gray

DELSO Escalator
Material

> 06
PAGE

> Step



Die-cast Aluminum step with
yellow painted frame



Stainless Steel step with
yellow plastic frame



Aluminum step with
yellow plastic frame

> DELSO Escalator Material

DELSO Escalator Material
> 07
PAGE

> Comb



Aluminum



Resin

> Balustrade Lighting



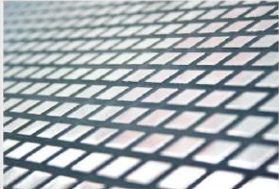
> Skirting Lighting



> Landing Plate



Aluminum

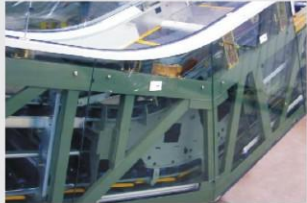


Punched Stainless Steel

> The Material Option of Outside Cladding



Glass

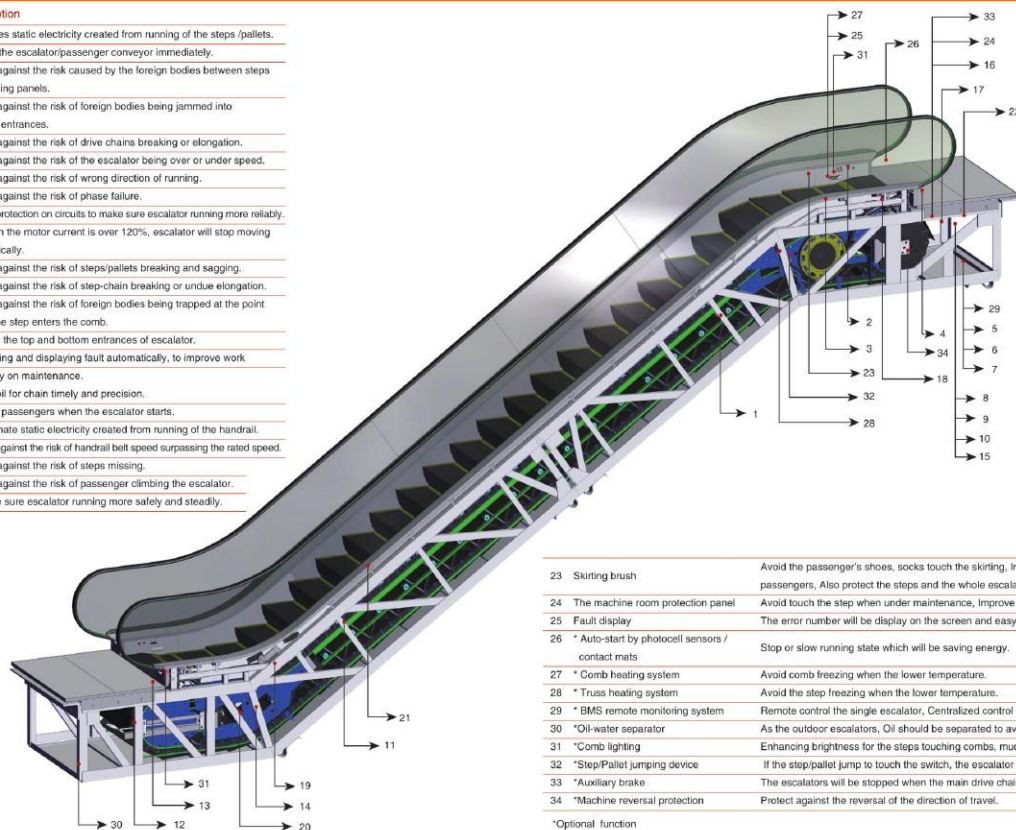


Glass

DELSO Escalator Material
> 08
PAGE

➤ Standard and Optional Function

No.	Safety Function	Description
1	Anti-static brush	Eliminates static electricity created from running of the steps /pallets.
2	Emergency stop button	To stop the escalator/passenger conveyor immediately.
3	Skirting protection	Protect against the risk caused by the foreign bodies between steps and skirting panels.
4	Handrail entrance protection	Protect against the risk of foreign bodies being jammed into handrail entrances.
5	Broken drive-chain protection	Protect against the risk of drive chains breaking or elongation.
6	Over/Under speed monitor	Protect against the risk of the escalator being over or under speed.
7	Anti-reversal protection	Protect against the risk of wrong direction of running.
8	Default phase protection	Protect against the risk of phase failure.
9	Electric circuit protection	Double protection on circuits to make sure escalator running more reliably.
10	Motor overload and overheat protection	Act when the motor current is over 120%, escalator will stop moving automatically.
11	Step/Pallet sagging protection	Protect against the risk of steps/pallets breaking and sagging.
12	Broken step-chain protection	Protect against the risk of step-chain breaking or undue elongation.
13	Comb protection	Protect against the risk of foreign bodies being trapped at the point where the step enters the comb.
14	Step gap illumination	To show the top and bottom entrances of escalator.
15	Fault display	Diagnosing and displaying fault automatically, to improve work efficiency on maintenance.
16	Auto Lubrication System	Supply oil for chain timely and precision.
17	Start alarm device	To warn passengers when the escalator starts.
18	Handrail anti-static protection	To eliminate static electricity created from running of the handrail.
19	Handrail belt speed monitor	Protect against the risk of handrail belt speed surpassing the rated speed.
20	Step missing protection	Protect against the risk of steps missing.
21	*Anti-creeping device	Protect against the risk of passenger climbing the escalator.
22	*PESSRAE system	To make sure escalator running more safety and steadily.



23	Skirting brush	Avoid the passenger's shoes, socks touch the skirting, Improve the safety of the passengers, Also protect the steps and the whole escalator normal operation.
24	The machine room protection panel	Avoid touch the step when under maintenance, Improve the safety of the passengers.
25	Fault display	The error number will be display on the screen and easy for maintenance.
26	* Auto-start by photocell sensors / contact mats	Stop or slow running state which will be saving energy.
27	* Comb heating system	Avoid comb freezing when the lower temperature.
28	* Truss heating system	Avoid the step freezing when the lower temperature.
29	* BMS remote monitoring system	Remote control the single escalator, Centralized control Multi-escalators.
30	* Oil-water separator	As the outdoor escalators, Oil should be separated to avoid pollute the environment.
31	*Comb lighting	Enhancing brightness for the steps touching combs, much safer.
32	*Step/Pallet jumping device	If the step/pallet jump to touch the switch, the escalator will be stopped.
33	*Auxiliary brake	The escalators will be stopped when the main drive chain broken or overspeed.
34	*Machine reversal protection	Protect against the reversal of the direction of travel.

*Optional function

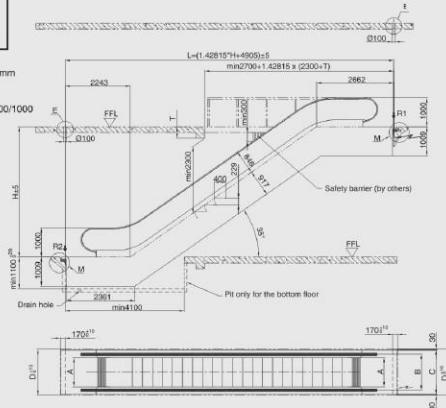
Escalator Specifications & Parameters

Escalator Specifications & Parameters

PAGE **11**

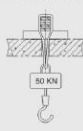
Vertical rise: Max. 9000mm
Inclination angle: 35°
Horizontal steps: 2
Step width (mm): 600/800/1000

DELS/C 235 Commercial/Slimline Escalator Layout Drawing

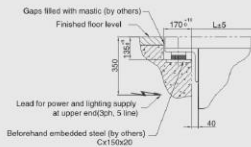


Step width A(mm)	Vertical rise H(mm)	Dead load KN	Reaction force	
			R1(KN)	R2(KN)
600	3000	54	43	39
	3500	57	46	41
	4000	60	49	44
	4500	64	52	46
	5000	67	54	49
	5500	70	57	51
800	3000	56	49	44
	3500	60	52	47
	4000	63	56	50
	4500	66	59	53
	5000	70	62	56
	5500	73	65	59
1000	3000	76	69	61
	3500	80	72	64
	4000	84	75	67
	4500	88	78	70
	5000	92	81	73
	6000	108	96	84

Detail E (by others)



Detail M



Explanation:

- All dimensions in mm;
- If add horizontal step, then horizontal span should be added correspondingly;
- When the step width A=800mm, the truss must be extended by 420mm;
- For outdoor type, pit depth should be 1450mm.

Type	DELS/C235-600	DELS/C235-800	DELS/C235-1000
A. Step width	600	800	1000
B. Handrail belt center width	838/910	1038/1110	1238/1310
C. Escalator width	1140/1200	1340/1400	1540/1600
D. Pit width	1200/1260	1400/1460	1600/1660

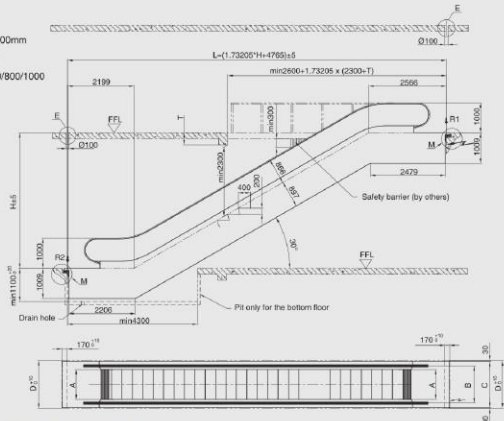
Escalator Specifications & Parameters

Escalator Specifications & Parameters

PAGE **12**

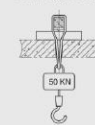
DELS/C 230 Commercial/Slim line Escalator Layout Drawing

Vertical rise: Max. 6000mm
Inclination angle: 30°
Horizontal steps: 2
Step width (mm): 600/800/1000

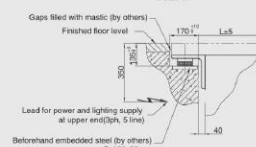


Step width A(mm)	Vertical rise H(mm)	Dead load KN	Reaction force	
			R1(KN)	R2(KN)
600	3000	57	46	41
	3500	60	49	44
	4000	64	52	47
	4500	68	56	50
	5000	71	59	53
	5500	75	62	56
800	3000	79	65	59
	3500	83	69	62
	4000	87	73	66
	4500	91	77	70
	5000	95	81	74
	5500	99	85	78
1000	3000	119	94	84
	3500	125	99	89
	4000	131	104	94
	4500	137	109	99
	5000	143	114	104
	6000	171	138	126

Detail E (by others)



Detail M



Explanation:

- All dimensions in mm;
- If add horizontal step, then horizontal span should be added correspondingly;
- When the step width A=600mm, the truss must be extended by 420mm;
- For outdoor type, pit depth should be 1450mm.

Type	DELS/C230-600	DELS/C230-800	DELS/C230-1000
A. Step width	600	800	1000
B. Handrail belt center width	838/910	1038/1110	1238/1310
C. Escalator width	1140/1200	1340/1400	1540/1600
D. Pit width	1200/1260	1400/1460	1600/1660

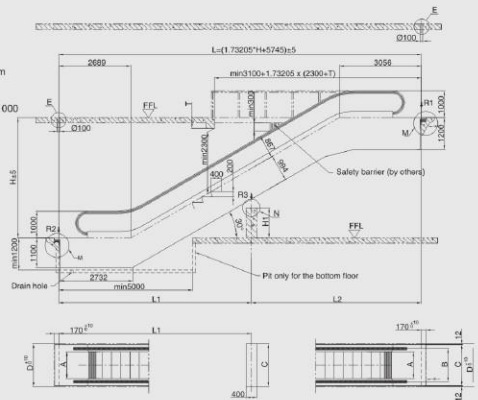
Escalator Specifications & Parameters

Passenger Conveyor Specifications & Parameters

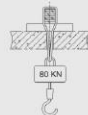
Escalator Specifications & Parameters
PAGE 13

DELH 330 Heavy Duty Escalator layout Drawing

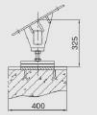
Vertical rise: Max. 15000mm
Inclination angle: 30°
Horizontal steps: 3
Step width (mm): 600/800/1000



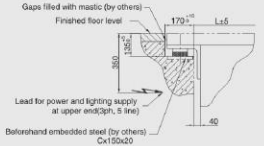
Detail E (by others)



Detail N



Detail M



Type	DELH 330-600	DELH 330-800	DELH 330-1000
A. Step width	600	800	1000
B. Handrail bolt center width	910	1110	1310
C. Escalator width	1200	1400	1600
D. Pit width	1260	1460	1660

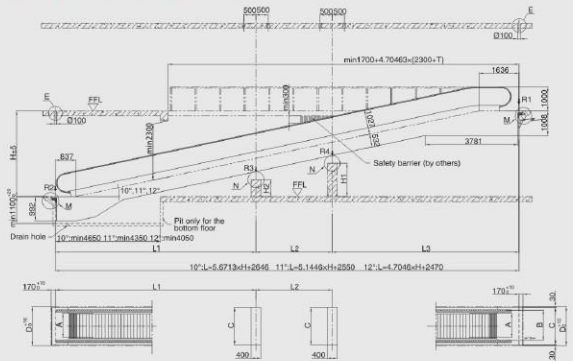
Step width	600	800	1000
R1(KN)	4.1xL2+15.5	4.5xL2+16.1	5xL2+17.5
R2(KN)	4.1xL1+7.8	4.5xL1+7.8	5xL1+8.5
R3(KN)	4.25xL+9.5	4.5xL+10.5	5.2xL+11.5

Explanation: L, L1, L2 dimensions in M. L1, L2 is not more than 15m.

- Explanation:**
- All dimensions in mm;
 - If add horizontal step, then horizontal span should be added correspondingly;
 - When the step width A=600mm, the truss must be extended by 420mm;
 - For outdoor type, pit depth should be 1500mm.

DELPI 12 Commercial Passenger conveyor Layout Drawing

Vertical rise: Max. 8000mm
Inclination angle: 10°/11°/12°
Step width (mm): 800/1000



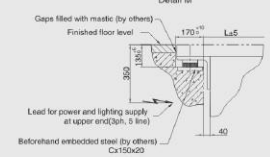
Type DELPI 12-800 DELPI 12-1000

A. Step width	800	1000
B. Handrail bolt center width	1038	1238
C. Escalator width	1340	1540
D. Pit width	1400	1600

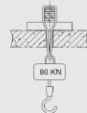
Reaction parameters	q	M	N
800	0.0039	9.5	4.5
1000	0.0045	11	5

Inclination angle	Vertical rise		Intermediate support	
	From	To	R3(KN)	R4(KN)
10°	1297	2178	-	-
	2179	4823	1	-
	4824	9000	1	1
	1449	2420	-	-
11°	2421	5335	1	-
	5336	6000	1	1
	1601	2963	-	-
12°	2664	5851	1	-
	5852	6000	1	1

No intermediate support (KN)	Single intermediate support (KN)	Double intermediate support (KN)
R1=Lxq+M	R1=L3xq+M	R1=L3xq+M
	R2=L1xq+N	R2=L1xq+N
R2=Lxq+N	R3=(L1-L3)x1.3xq	R3=(L1-L3)x1.3xq
Note	L1, L2, L3 not exceed 15m	R4=(L3-L2)x1.3xq



Detail E (by others)



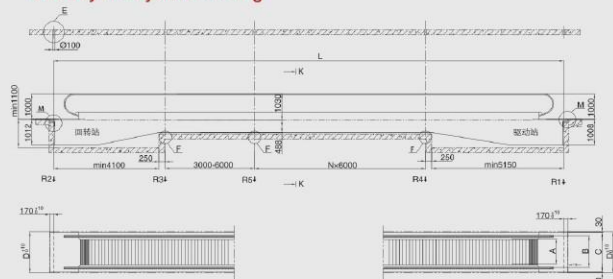
Detail N



- Explanation:**
- All dimensions in mm;
 - For outdoor type, pit depth should be 1450mm.

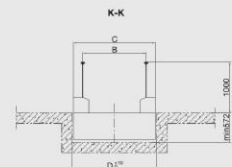
➤ DELPH0 Public Transport Passenger
Conveyor Layout Drawing

Horizontal span: Max. 200
Inclination angle: 0°
Step width (mm): 800/1000

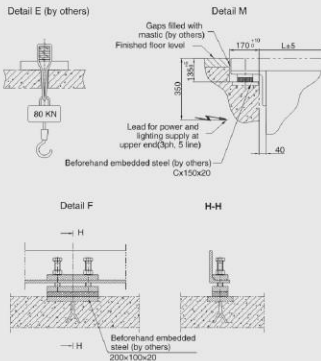


Type	DELPH0-800	DELPH0-1000
A. Step width	800	1000
B. Handrail belt center width	1038	1238
C. Escalator width	1340	1540
D. Pit width	1400	1500

Reaction force	800	1000
R1	45KN	49KN
R2	31KN	33KN
R3	30KN	32KN
R4	32KN	34KN
R5	44KN	53KN



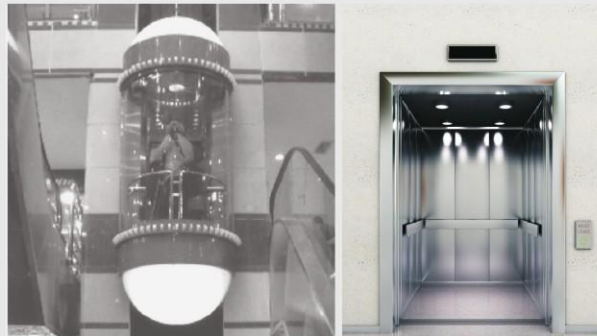
Explanation:
1. All dimensions in mm.
2. For outdoor type, pit depth should be 1450mm.



ELEVATOR

DEL^{SO} elevators, complying European Latest EN81 And China GB7588-2003 standards, are adopted new materials and advanced technology to carry on its design and manufacture. They are operating smoothly, little noise and high reliability. They are durable and easy to maintain.

Because of its superior design concept and advanced manufacturing process, DEL^{SO} various elevator has full specification, exquisite decoration, stable layout. Which are widely used in Resident Apartment, Business Building, Villa, Hospital, and many other Government projects building, etc.

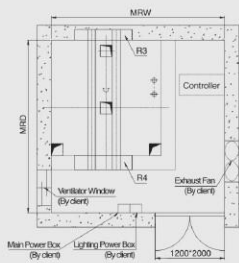
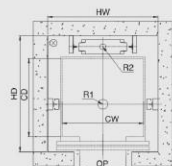
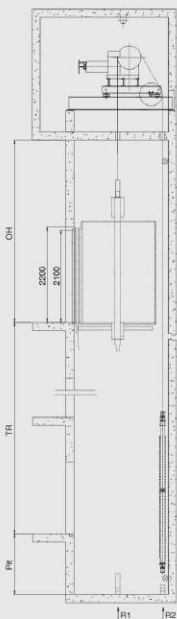


➤ Traction Elevator Specification and Parameters

Specification and Parameters

➤ **17**
PAGE

➤ Passenger Elevator Layout Drawing



Shaft Vertical Drawing

Machine room Plane Drawing

Specification and Parameters

➤ **18**
PAGE

➤ Parameter Table of Passenger Elevator

Type	Rated Speed (m/min)	Persons	Shaft Inner Size (mm)						Reactions (Kg)					
			OP	CW × CD	HW × HD	HRW × MRD	OH	Pt	R1	R2	R3	R4	R5	
TKJ400	60	5	750×2100	1300×850	1800×1500	3000×3000	3900	1400	4000	3200	2500	3050	-	
	TKJ450	60	6	750×2100	1350×900	1850×1550	3000×3000	3900	1400	4000	3300	2500	3050	-
TKJ630	60/90	8	800×2100	1400×1100	1900×1700	3000×3000	4000	1500	8000	4700	3000	4400	-	
	4100						1500	5000	4200	3200	2000	1500		
TKJ800	60	10	800×2100	1400×1350	1900×2000	3000×3000	3000	1400	7500	5900	4100	4620	-	
	4000						1500	8000	6400	-				
TKJ1000	60	13	900×2100	1800×1400	2100×2050	3000×3000	3500	1400	8300	6200	4300	5400	-	
	4200						1500	8400	6700	4300	5400	4400		
TKJ1150	60	15	1000×2100	1800×1400	2300×2050	2300×2050	4100	1400	10000	8200	4100	4620	-	
	4300						1600	11100	8800	5400	5900	5400		
TKJ1350	60	16	1100×2100	2000×1400	2600×2150	2600×2150	4700	2100	12500	10000	5800	6380	-	
	5000						2600	13100	10500	5800	6380	-		
TKJ1350	60	16	1100×2100	2000×1500	2500×2150	2500×2150	4700	1500	11800	9100	5800	6380	-	
	4400						1600	12300	9600	6200	6760	6260		
TKJ1350	120	18	1100×2100	2000×1500	2800×2250	2800×2250	4800	1700	12800	10100	6200	6760	-	
	4700						2100	13300	10600	6200	6760	-		
TKJ1600	60	21	1100×2100	2100×1600	2700×2390	2700×2390	5000	2600	13800	11100	6200	6760	-	
	5700						3600	14300	11600	6200	6760	-		
TKJ1600	60	21	1100×2100	2100×1600	2700×2390	2700×2390	4200	1500	14000	11000	7240	7740	7240	
	4400						1600	14500	11500	7240	7740	7240		
TKJ1600	120	21	1100×2100	2100×1600	2700×2390	2700×2390	4500	1700	15000	12000	7240	7740	-	
	4700						2100	15500	12500	7240	7740	-		
TKJ1600	180	21	1100×2100	2100×1600	2700×2390	2700×2390	5000	2600	15000	13000	7240	7740	-	
	5700						3600	15500	13300	7240	7740	-		

Note: Please contact us for confirmation if the specification such as overhead height, pit depth, shaft inner size and so on, are not according with the above the standard, we can design and produce as customer's requirement. (If being modified, please understand that we won't notice)

➤ Traction Elevator Specification and Parameters

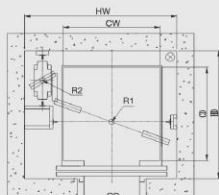
Specification and Parameters

➤ 20
PAGE

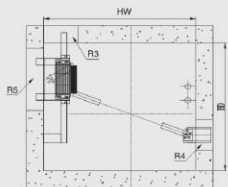
Specification and Parameters

➤ 19
PAGE

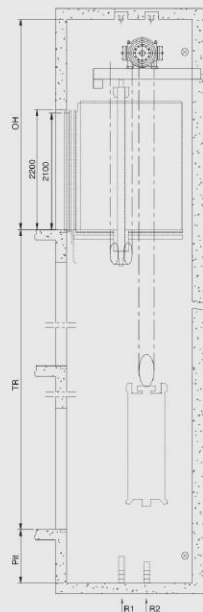
➤ Machine Roomless Elevator Layout Drawing



Shaft Plane Drawing



Top floor Plane Drawing



Shaft Vertical Drawing

Type	Rated Speed (m/min)	Persons	Shaft Inner Size (mm)					Reactions (Kg)				
			OP	CW x CD	HW x HD	OH	Pt.	R1	R2	R3	R4	R5
TWJ450	60	6	750x2100	800x1350	1900x1750	3800	1400	4000	3200	2560	3000	1500
	4000					1900						
TWJ630	60	8	800x2100	1100x1400	2000x1850	3800	1400	6000	4700	3960	4400	1800
	4000					1800						
TWJ800	60	10	800x2100	1400x1850	2200x1850	4000	1400	6500	5200	4120	4620	2100
	4200					1800						
TWJ1000	60	13	900x2100	1400x1800	2250x2050	4000	1400	8900	6200	4900	5400	2500
	4200					1700						
TWJ1150	60	15	1000x2100	1400x1800	2400x2250	4300	1500	10600	8300	5400	5900	2600
	4500					1700						
TWJ1250	60	16	1000x2100	1400x2000	2500x2450	4400	1600	11100	8500	5880	6380	2700
	4500					1700						
TWJ1350	60	18	1100x2100	1500x2000	2600x2450	4400	1600	11800	9100	6250	6760	2800
	4500					1700						
TWJ1600	60	21	1100x2100	1600x2100	2700x2500	4500	1600	12000	9000	7500	8400	3900
	4600					1700						

(If being modified, please understand that we won't notice)

Note: Please contact us for confirmation if the specification such as overhead height, pit depth, shaft inner size and so on, are not according with the above the standard, we can design and produce as customer's requirement.



- Model No.: DELC016-2014A
- Ceiling: Hardline Stainless Steel finish, LED lighting
 - Car Wall: Hardline Stainless Steel finish
 - Handrail: One size Stainless Steel Tube
 - Floor: PVC Floor



- Model No.: DELC016-2014B
- Ceiling: Painted Steel finish, LED lighting
 - Car Wall: Hardline Stainless Steel finish
 - Handrail: One size Stainless Steel Tube
 - Floor: PVC Floor

> Traction Elevator Specification and Parameters

Specification and Parameters

> 21
PAGE

> Panoramic Elevator Standard Cabin Design



Model No.: DELGC019

Car Cover

Painted steel with vertical strip design

Decoration Roof

Image plate with two side spot lights

Observation Wall

Three glue glass with safety clamp

Car Wall

Hairline stainless steel

Handrail

Stainless steel, pair tube

Floor

PVC floor



Model No.: DELGC020

Car Cover

Pentagon painted steel with decoration light

Decoration Roof

Round acrylic lamp in the center, spot light at the side

Observation Wall

Glue glass with safety clamp

Car Wall

Hairline stainless steel

Handrail

Stainless steel, single tube

Floor

PVC floor

> Parameter Table of Panoramic Elevator

Type	Rated Speed (m/min)	Persons	Shaft Inner Size (mm)						Reactions (Kg)				
			CP	CW x CD	HW x HD	HRW x MRD	CH	PI	R1	R2	R3	R4	R5
TGL800	60	10	800x2100	1200x1700	2100x2300	3200x3900	4900	1800	7500	5900	4100	4600	4100
	5000						1900	8000	6400				
TGL1000	60	13	900x2100	1400x1700	2300x2300	3400x3900	4900	1900	8900	6200	4900	5400	4900
	5000						1900	9400	6700				
TGL1350	60	18	1100x2100	1500x2000	2500x2800	3500x4200	4900	1900	11800	9100	6200	6700	6200
	5000						2000	12300	9600				

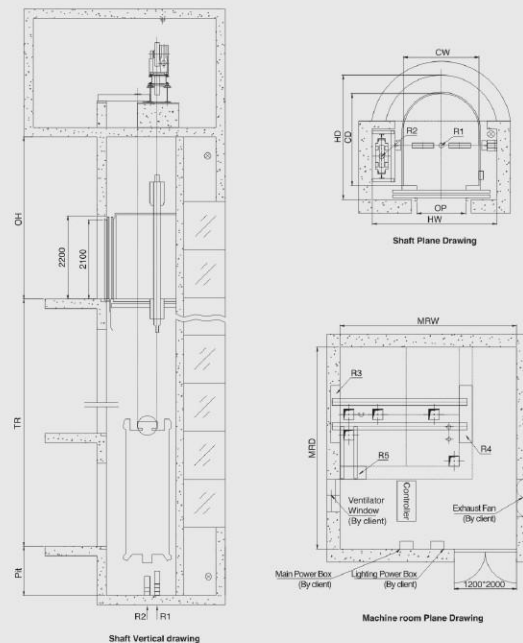
(If being modified, please understand that we won't notice)

Remarks: Please contact us if your specification such as overhead height, pit depth, shaft inner size etc. various to DELISO standard parameters. We can design and manufacture according to your requirement.

Specification and Parameters

> 22
PAGE

> Panoramic Elevator Layout Drawing



> Traction Elevator Specification and Parameters

Specification and Parameters

> 23
PAGE

> Villa Elevator Standard Cabin Design



Model No.: DELJC 011

Ceiling

Titanium and mirror finish;
soft lighting

Car Wall

Titanium etch

Handrail

DEL-303TF

Floor

PVC Floor



Model No.: DELJC 010

Ceiling

Mirror finished hairline stainless
steel; spot light

Car Wall

Hairline Stainless steel

Handrail

DEL-301F

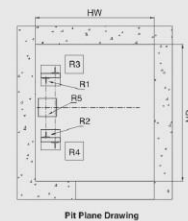
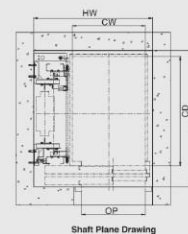
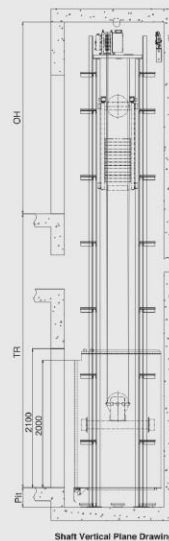
Floor

PVC Floor

> Villa Elevator Layout Drawing

Specification and Parameters

> 24
PAGE



> Parameter Table of Villa Elevator

Type	Rated Speed (m/min)	Persons	Shaft Inner Size (mm)					Reactors (Kg)				
			OP	CW x CD	HW x HD	OH	Pit	R1	R2	R3	R4	R5
TYJ250	24	3	700x2000	800x1200	1300x1500	3000	300	3000	3000	2500	2500	2000
TYJ320	24	4	800x2000	900x1200	1400x1500	3000	300	3000	3000	2500	2500	2000
TYJ400	24	5	800x2000	900x1300	1400x1600	3000	500	3500	3500	3000	3000	2500

(If being modified, please understand that we won't notice)

> Traction Elevator Specification and Parameters

Specification and Parameters

> **25**

PAGE

> Hospital Elevator Standard Cabin Design



Model No.: DELISO10



Model No.: DELISO11

> Parameter Table of Hospital Elevator

Type	Rated Speed (m/min)	Persons	Shaft inner size (mm)						Reactions (Kg)					
			OP	CW x CD	HW x HD	MFW x MRD	CH	P8	R1	R2	R3	R4	R5	
TBL1250	60	16	1100x2100	1200x2300	2450x2950	3600x4800	4300	1400	10900	8430				
	90						4400	1500	11800	8930	5790	6290	3240	
	105						4500	1700	11900	9430				
TBL1600	60	21	1300x2100	1400x2400	2450x2850	3600x4800	4400	1500	14300	11000				
	90						4500	1700	14900	11500	7240	7740	4200	
	105						4800	1700	15000	12000				
TBL2000	60	26	1500x2100	1500x2700	2500x3150	3600x5100	4400	1500	17000	13000				
	90						4500	1700	17900	14000	7240	7740	4500	
	105						4800	1700	18000	14500				

(If being modified, please understand that we won't notice)

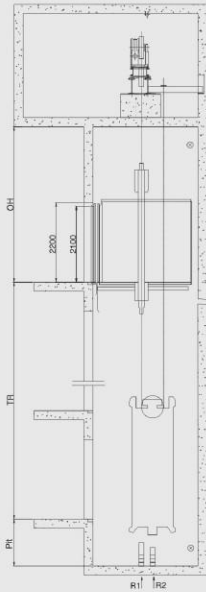
Remarks: DELISO DEL21 series hospital elevators are designed and manufactured strictly complying with European Standard EN81 and Chinese standard GB7588 "Safety Rules for the manufacturing and installation of elevators", and can be used widely in hospitals or sanatoriums.

Specification and Parameters

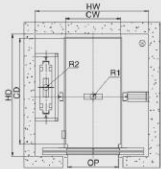
> **26**

PAGE

> Hospital Elevator Layout Drawing



Shaft Vertical Drawing



Shaft Plane Drawing



Machine room Plane Drawing

> Traction Elevator Specification and Parameters

Specification and Parameters

> 27
PAGE

> Freight Elevator Standard Cabin Design

Model No.:DELHC10

Car Roof

Painted steel

Car Wall

Steel plate

Floor

Checked steel



> Parameter Table of Freight Elevator

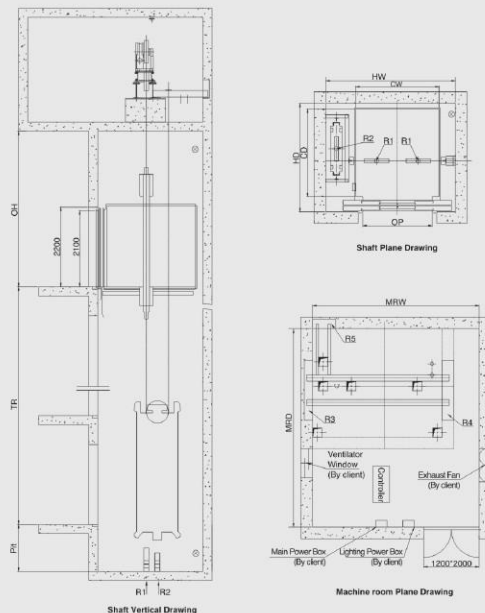
Type	Rated Speed (m/min)	Capacity (Kg)	Shaft Inner Size (mm)						Reactions (Kg)					
			OP	CW x CD	HW x HD	MRWF x MFRD	CH	FR	R1	R2	R3	R4	R5	R6
THJ1000	30	1000	1300x2100	1600x1400	2550x1850	3400x4100	4300	1500	8900	6200	4900	5400	-	-
THJ1600	30	1600	1500x2100	1800x1900	2600x2350	3500x4300	4300	1500	13700	10700	6850	7350	6850	-
THJ2000	30	2000	1500x2100	1900x2100	2850x2550	3800x4600	4300	1500	16100	14100	8800	9300	9800	-
THJ3000	30	3000	1700x2100	2200x2500	3150x2950	4100x5000	4400	1500	26900	20900	12700	13200	12700	-
THJ4000	30	4000	1800x2100	2400x3000	3400x3450	4400x5300	4500	1600	33700	27700	17000	17700	17600	-
THJ5000	15	5000	2000x2100	2500x3500	3500x3950	4500x5800	4500	1500	44500	34500	20500	21000	26500	21000
	4500						1000							

(If being modified, please understand that we won't notice)

Specification and Parameters

> 28
PAGE

> Freight Elevator Layout Drawing



> DELISO Elevator Cabin Decoration

> DELISO Elevator Components Option

Cabin
Decoration

> PAGE 29

> Elevator Cabin

Elegant and graceful car matched with concise and fluent ceiling bring you into a quiet and comfortable space.

> Mirror etched Type



DELCO10
Car wall: Mirror finish, Etched,
Hairstine stainless steel, Vibration finish



DELCO11
Car wall: Mirror finish, Etched,
Hairstine stainless steel finish



DELCO12
Car wall: Mirror finish, Etched,
Hairstine stainless steel finish



DELCO13
Car wall: Mirror finish,
Etched, Hairstine
stainless steel finish



DELCO14
Car wall: Mirror finish,
Etched, Hairstine
stainless steel finish



DELCO18
Car wall: Mirror finish,
Etched, Hairstine
stainless steel finish



DELCO09
Car wall: Mirror finish,
Etched, Hairstine
stainless steel finish



DELCO30
Car wall: Mirror finish,
Etched, Hairstine
stainless steel finish

> Titanium Etched Type



DELCO15
Car wall: Mirror, Etched,
Titanium finish



DELCO17
Car wall: Mirror, Etched,
Titanium finish



DELCO31
Car wall: Mirror, Etched,
Titanium finish



DELCO32
Car wall: Mirror, Etched,
Titanium finish

> Panoramic cabin model



DELGC016



DELGC017



DELGC018



DELGC011



DELGC013



DELGC014



DELGC015



DELGC021

Cabin
Decoration

> PAGE 30

> DELISO Elevator Components Option

Components
Option

> 31
PAGE

> Elevator door

DELISO designs different styles of oriental, European, Classic, Modernistic style according to various car styles with elegant model and complete size. Customers can make personalized selects according to their own preference.

> Mirror Etched Door



DEL D010
Mirror, Etched,
Hairline stainless steel



DEL D011
Mirror, Etched,
Hairline stainless steel



DEL D012
Mirror, Etched,
Hairline stainless steel



DEL D013
Mirror, Etched,
Hairline stainless steel



DEL D014
Mirror, Etched

> Titanium Etched Door



DEL D015
Ti-plated finish,
Mirror finish, Etched



DEL D018
Mirror finish, Etched,
Hairline stainless steel finish,
Concave in golden

> Glass door



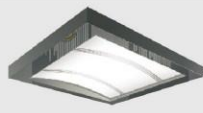
DEL D043
Glass door with
Hairline stainless steel frame

Components
Option

> 32
PAGE

> Ceiling

DELISO ceiling will be the most excellent part for car environment. In aesthetics as well as illumination function.



DEL T-1403



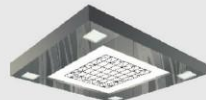
DEL T-1404



DEL T-1409



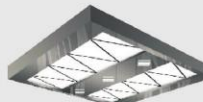
DEL T-1401



DEL T-1406



DEL T-1411



DEL T-1407



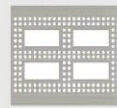
DEL T-1408



DEL T-1413



DEL T-1410



DEL T-1412



DEL T-1414

Components Option

PAGE **33**

> Decoration of Car Floor

The decoration of car floor is made up 2mm thick patch-up design PVC marble-line floor, which is light and convenient installation. The wonderful and noble colors of PVC floor are equal to that of real marble.



DEL-S06



DEL-S07



DEL-S09



DEL-S10



DEL-S17



DEL-713



DEL-728



DEL-727



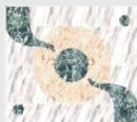
DEL-710



DEL-731



DEL-729



DEL-715



DEL-732



DEL-733



DEL-702

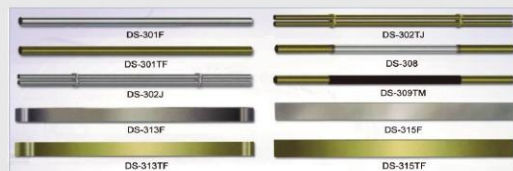
> DELSO Elevator Components Option

Components Option

PAGE **34**

> Handrail

According to the features of different elevator car decoration, DELSO has designed several types of handrails with different materials, like stainless steel circle, ellipse square tube, Ti-plated tube, wood; stainless steel, hairline stainless steel and Perspex stick and so on. DELSO handrails are beautifully designed and size is complete. Customers can choose different type of handrail according as they like.



> Hall Call Station and Car Operation Panel

