

**HYDRAULIC SPREADER
FOR SPOT WELD DESTRUCTION**

EHD 860 S

EHD 880 S

EHD 550 S

INDEX

	Pages
I - DESCRIPTION	
1.1 Important receiving instructions	2
1.2 Safety instructions	2
II – OPERATING INSTRUCTIONS	
2.0 Product description	2
2.1 Hydraulic Spreader EHD860S/880S/550S	2
3.0 Operating the EHD890S/880S/550S	2
3.1 Using the spreaders	3
4 Maintenance and service	3
4.1 Disassembling the dead man's control handle	3
5 Maintenance	4
6 Trouble shooting	4
7 Illustrations	5
III – Assembly drawings, parts list, exploded views	
Hydraulic Unit EHD860S	6-7
Hydraulic Unit EHD880S	8-9
Hydraulic Unit EHD550S	10-11
Gyroscopic system with safety swan neck SGC860	12-13
Gyroscopic system with safety swan neck SGC880	14-15
Gyroscopic system with safety swan neck SGC550	16-17
Safety holding wheel VMS860	18-19
Safety holding wheel VMS880	20-21
Safety holding wheel VMS550	22-23
Control handle with safety system PCS	24-25
WARRANTY	26

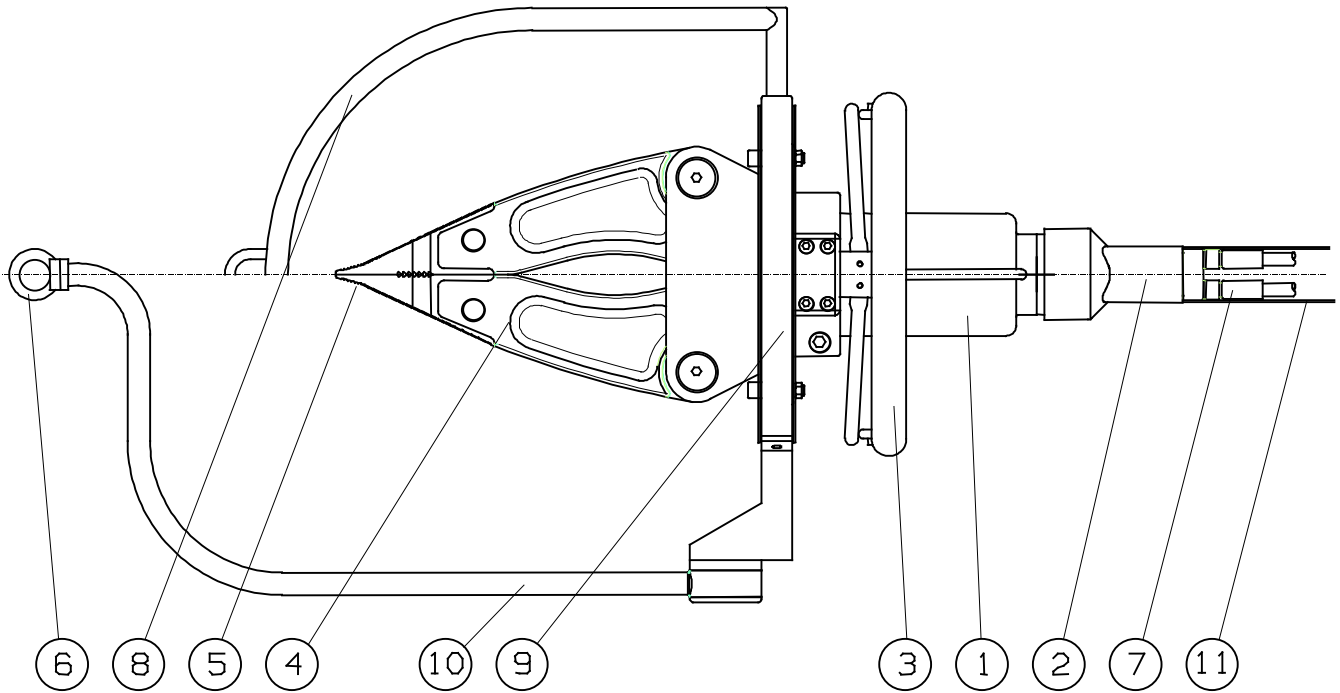


Figure 1

- 1 – Double acting control cylinder
- 2 – Deadman's control handle
- 3 – Carrying handle with or without safety system.
- 4 – Spreader arms
- 5 – Barbed tips
- 6 – Suspension ring
- 7 – Quick connect couplers with hydraulic hose
- 8 – Handle suspension system
- 9 – Gyroscopic system
- 10 – Swan neck suspension system
- 11 – Hose protection sleeve.



II Operating instructions

Hydraulic spreaders & accessories:
EHD860 S/EHD 880 S / EHD 550 S

1.1 Important receiving instructions

Visually inspect all components for shipping damage. If any damage is found, notify the carrier immediately. Shipping damage is not covered by warranty. The carrier is responsible for all repair and replacement costs resulting from damage in shipment.

COMPLIANCE WITH REGULATIONS.

This material complies:

With the terms of articles R233-85 to R233-106 of the work code and the prescriptions of Decree N° 80-544 of 15 July 1980.

Read all instructions, warnings and precautions to be taken carefully. Follow all safety precautions to avoid personal injury or property damage during system operation

HYDR'AM cannot be held responsible for damage or injury resulting from unsafe use of the product, and/or lack of maintenance. When in doubt contact **HYDR'AM** as to safety precautions and applications.
TO PROTECT YOUR WARRANTY ONLY USE HYDR'AM HYDRAULIC OIL OR EQUIVALENT.

By following the instructions you can ensure your own safety and keep your equipment in good condition.

1.2 Safety instructions

Read all instructions carefully before operating the equipment. Only use this equipment for the task it was designed for. When in doubt or in case of ambiguity contact your supplier. Always wear personal protection equipment such as safety glasses, head covering, face visor, gloves protective clothing and safety shoes. When handling tools use both hands and make sure the objects being handled are supported. Hold the tool with one hand on the carrying handle and the other on the control handle. If any irregularities occur during operation, immediately stop the tool and refer to the trouble shooting table in section 6. Never disconnect quick connect couplers while the hydraulic unit is running. Only use **HYDR'AM** accessories. The tool must be stored with the arms slightly open. Make sure the safety label is visible. If repairs are necessary they

must be done qualified personnel approved by **HYDR'AM**.

2.0 Product description

HYDR'AM EHD860S/880S/550S/750S spreaders are double acting tools. They comply with French standards. NFS 61.571. To spread or to unite objects, see §3.

2.1 Hydraulic Spreader EHD860S/880S/550S.

Refer to figure 1 page 1 for the description of the parts of the spreader.

- 2.1.1. Double acting cylinder to provide the spreading and uniting performance
- 2.1.2. Integrated deadman's handle which moves automatically into the neutral position when the handle is released. The spreader arms will stop and maintain their actual position.
- 2.1.3. Normal carrying handle or with safety devise. It is essential to fully tighten up the integrated safety handle to start the motor..
- 2.1.4. Spreader arms in light alloy
- 2.1.5. Spreader tips, barbed for optimum grip on parts and metal sheets.
- 2.1.6. Suspension ring
- 2.1.7. Hydraulic couplers connecting the tool to the hydraulic unit
- 2.1.8. Handle suspension system
- 2.1.9. Gyroscopic system enabling tool use in any position
- 2.1.10. Swan neck suspension system.
- 2.1.11. Hose protection sheath

3.0 Operating the EHD860S/880S/550S/750S spreaders.

An electric motor unit powers the spreader. For start up and correct operating procedures see the unit instruction sheets. The maximum working pressure of the spreaders is 700 bar.

IMPORTANT: Before using these tools which develop considerable force, it is essential that operators fully understand all the operating instructions, safety stipulations, paragraphs marked "attention" and "warning". If in doubt contact **HYDR'AM**.

3.1 To operate the spreaders follow the steps below :

1 Connect the pump to the spreader, Connect the hydraulic hoses using quick connect couplers.

IMPORTANT:To avoid accidental disconnection of the hoses, make sure the locking rings of the quick connect couplers are fully tightened.

2.Check spreader operation.: after connecting the pump to the spreader, activate the pump following the procedures described in the pump instruction sheets.

3.Turn deadman's handle into spread position. The spreader arms will open. If the deadman's handle is released, it will automatically take the neutral (0) position. The spreader arms will stay in open position.

4.Turn deadman's handle to closed position. The spreader arms will close. If the deadman's handle is released, it will automatically take the neutral (0) position. The spreader arms will keep their actual position.

5. Check the connections and hydraulic parts of the spreader. There should be no oil leakage

4.0 Maintenance and service

Regularly inspect all components to detect any problem requiring service or maintenance. Replace worn or damaged parts and accessories. Clean the spreader after use.

Clean and lubricate the rotation points and moving parts with special grease ALTEMP QB 50.

HYDR'AM has ready to use spare parts kits available for repair and replacement. Repair parts instruction sheets with exploded views and spare parts breakdown are available.

4.1 Disconnecting the deadman's handle

If a service is required, follow the steps below to separate the deadman's handle from the spreader :

4.1.1. loosen the hexagon screw (ref C36) from the side of the deadman's handle and push aside the polyurethane handle (ref 6) on the hoses. Be careful don't lose the 3 balls (ref C17 and ref C25).

4.1.2. Unscrew the hoses from the back of the from the end of the deadman's handle.

4.1.3. Remove the polyurethane handle .(rep 6)

4.1.4 Pull out the annular spring (ref 13)

4.1.5. Loosen the 6 hexagon cap screws (ref C12) to remove the complete deadman's handle

IMPORTANT: When mounting the deadman's handle onto the spreader, make sure the new seals are correctly mounted (ref. C5). Re-tighten the 6 screws (ref.C12).

Position the springs (ref 13) as shown in the illustration below. **IMPORTANT.** The end of the spring, which is below, should be slightly raised (see Ref. A) then push the spring against the body of the handle(see illustration below) and centre the valve (ref 2) to provide passage for the pin (ref C22) when mounting the polyurethane handle (ref 6).

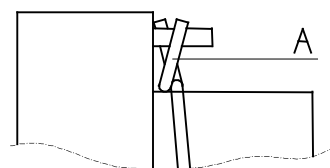
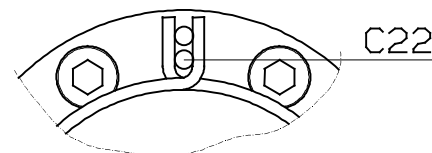
Put the polyurethane on the hoses.

Retighten the 2 hoses (ref C32).

Glue the two balls (ref C25) on the valve (ref 2) with some grease. Put back the polyurethane handle on the body of the dead man handle.

Tighten the hexagonal screw (C36) back

To avoid oil leakage, mount the black hose in the deadman's handle onto the advance port (P) and the red hose in the deadman's handle onto the retract port (R).Black hose (Advance) maximum pressure is 700 bar, red hose or blue hose (retract) maximum pressure 200 bar. P and R are stamped on the backside of the deadman's handle.





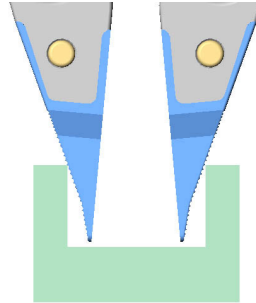
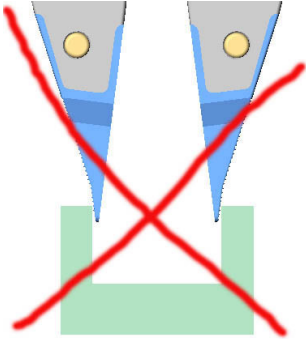
5. Maintenance

After each service, check the condition of the barbed tips.
Clean the connectors and protection caps.

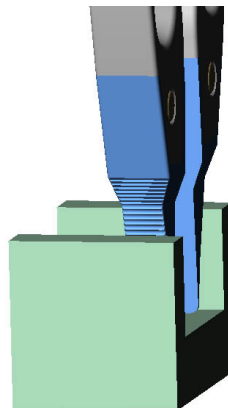
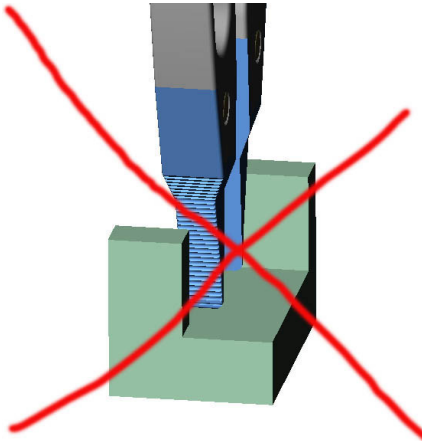
6. Trouble shooting

<u>PROBLEM</u>	<u>SOLUTION</u>
1. Quick connect couplers cannot be connected.	A. Loosen locking rings on the quick connect couplers. B. Hose is pressurized. Switch handle on manual valve on the pump several times to release pressure. If it is disconnected use a decompression device (DF 115 <i>HYDR'AM</i>)
2. Spreader does not react when activating the deadman's handle	A. Check if the quick connect couplers are correctly connected. B. Check the pump – Pump must be running – Manual valve must be in "open" position – Oil level in tank is too low. Top up the level
3. Deadman's handle leaks oil on the backside.	A. Check position of hoses on the spreader §4.1. B. Check if couplers are correctly tightened Make sure that the P-port on the pump is connected to the P-port on the spreader If not change position of the 2 hoses on the spreader. See §4.1 et figure 1 for the correct position of the quick connect couplers. E. If oil is still leaking, replace the deadman's handle (see §4.1).

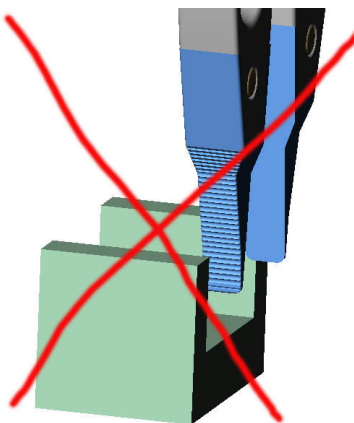
7 Illustrations



Never work with the tips in an unstable position, as the arms could distort causing tip breakage.



The bearing surface of the tips must be in equilibrium. Always work with the whole surface of the tips.



Never work with the extremities of the tips when applying large forces with the spreaders because of the danger of tip breakage.

NOTA:

Tips are regrindable several times do not throw them. When tips no longer adhere it is possible to regrind them on site or in HYDR'AM.



WARRANTY

HYDR'AM industrial equipment is guaranteed for one year as of the purchase date under normal use conditions

The warranty applies to all parts acknowledged as defective by our Technical Services. The warranty does not apply to cost of parts and labour involved in the normal maintenance of the equipment. It does not cover any damage due to negligence or incorrect use.

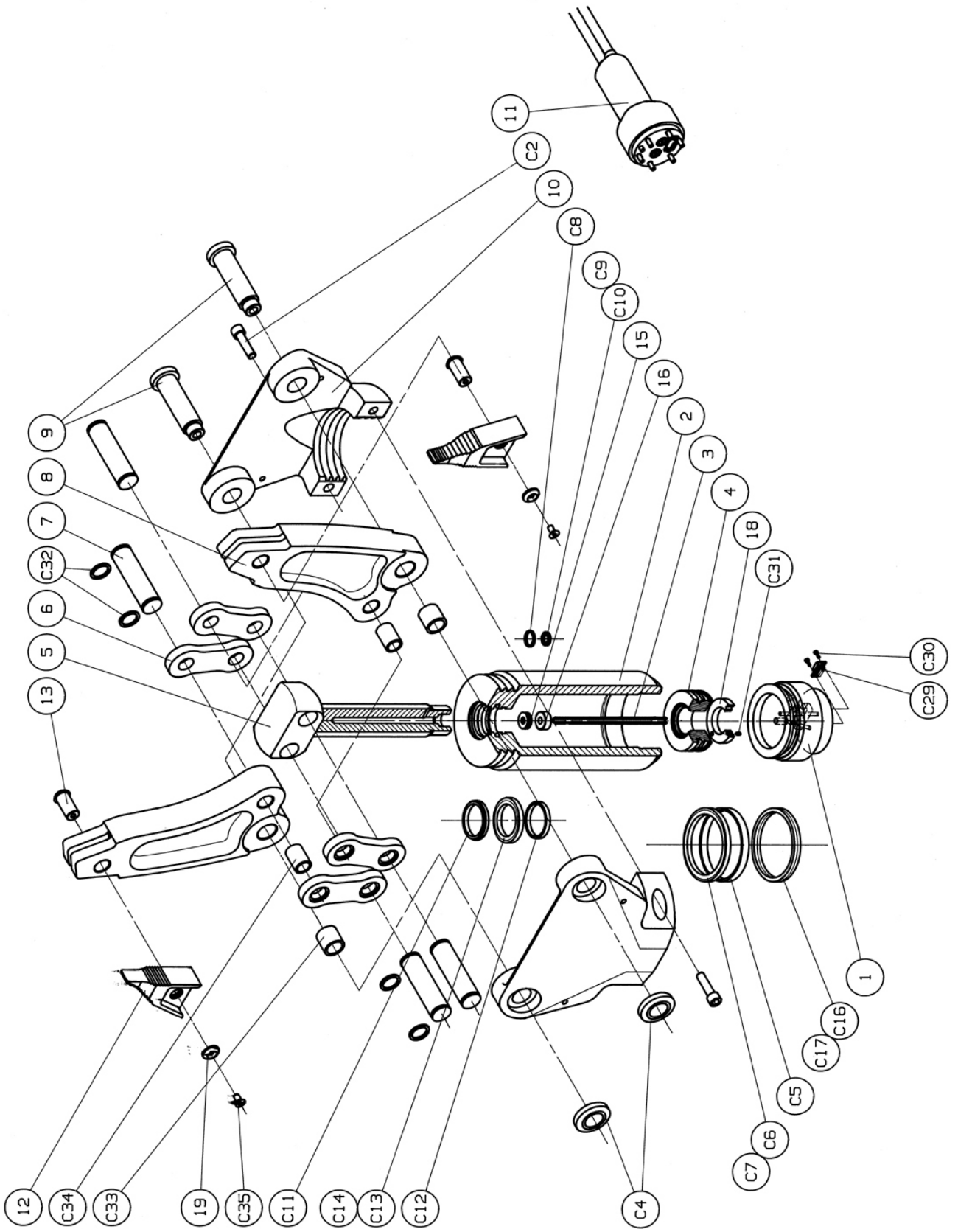
The operating warranty excludes any deterioration resulting from normal wear or aging of the product.

The warranty is not applicable if the equipment sold has not been used and operated under the conditions as stipulated in this manual. Furthermore, the warranty will no longer valid if any attempts have been made to disassemble our equipment. All maintenance and parts replacement must be exclusively carried out by the After Sales Service of **HYDR'AM**.

The warranty concerns the repair or replacement of components or equipment at **HYDR'AM's discretion, in its workshops**. Transport and packaging costs are for the account of the purchaser.

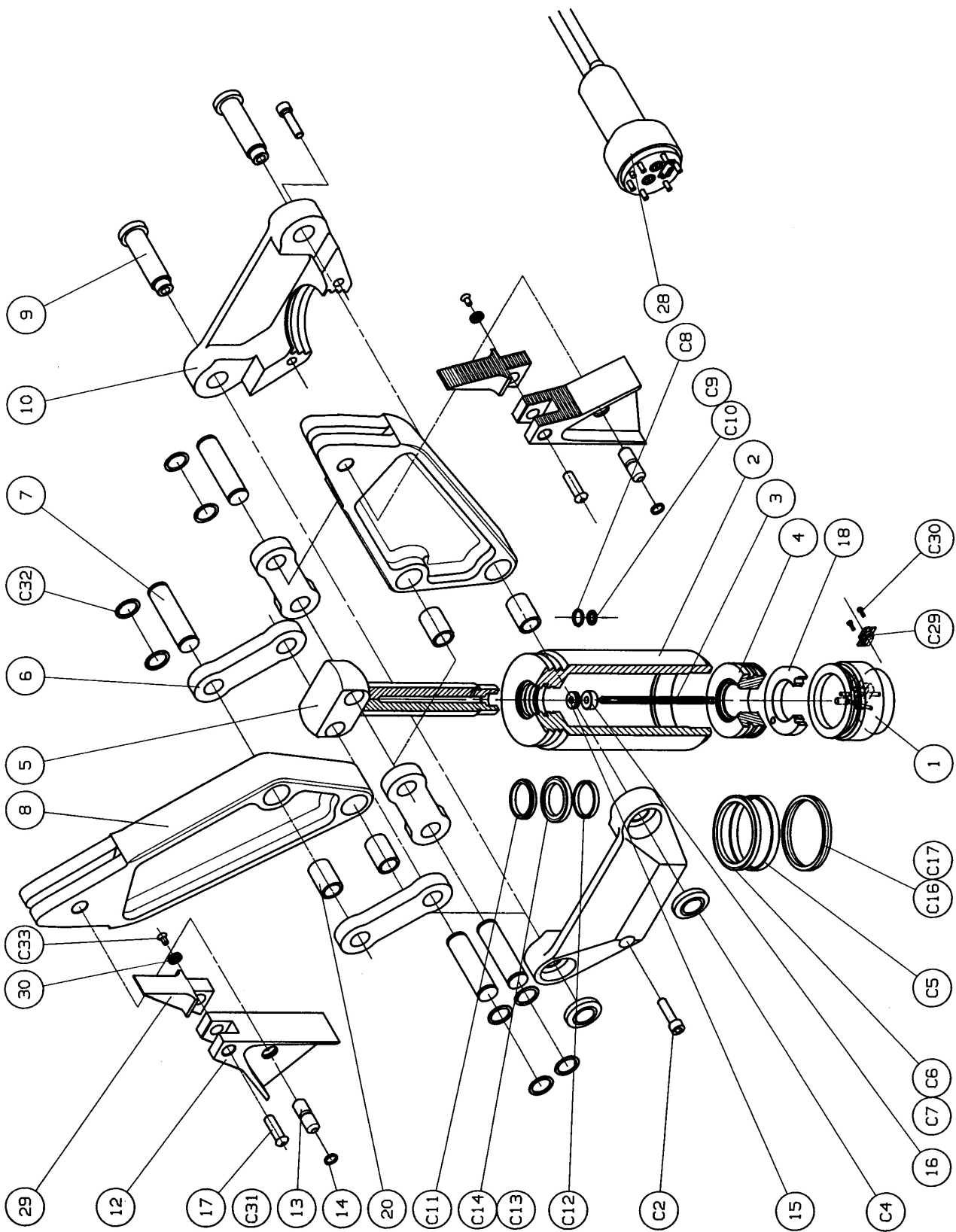
The defective parts exchanged become the property of **HYDR'AM**. The repair, modification or replacement of parts during the warranty period cannot lead to an extension of the warranty period.

Responsibility following the sale of our equipment is expressly limited to this warranty. It excludes the possibility of having recourse to penalties or damages.



EHD 860 S

KEY N°	IDENTIFICATION		DESIGNATION	QTY
	PART NUMBER	DESCRIPTION		
	01	EHD860 001	END CAP	1
	02	EHM860 102	CYLINDER BODY	1
	03	EHM860 003	PLUNGER	1
	04	EHD860 004	PISTON	1
	05	EHD860 005	PISTON ROD	1
	06	EHD860 006	LEVER	4
	07	EHD860 007	YOKE PIN	4
	08	EHD860 008	SPREADER ARM	2
	09	EHM860 009	SPREADER PIN	2
	10	EHD860 010	1/2 YOKE	2
	11	PCS	DEAD MAN HANDLE WITH SECURITY	1
	12	EHD860 012	SPREADER TIP	2
	13	EHM860 013	DOWEL PIN	2
	14			
	15	CHE2100 013	SEAL BUSHING	1
	16	CHE2100 014	LOCK NUT	1
	17			
	18	EHD860 018	PISTON NUT	1
		EHD860 019	DOWEL PIN NUT	2
	C01			
	C02	EHD860 C02	SCREW	2
	C03			
	C04	EHD860 C04	NUT	2
	C05	EHD860 C05	PISTON SEAL	1
	C06	EHD860 C06	GLYD-RING	1
	C07	EHD860 C07	O-RING	1
	C08	EHD860 C08	O-RING	1
	C09	EHD860 C09	O-RING	1
	C10	EHD860 C10	GLYD-RING	1
	C11	EHD860 C11	WIPER	1
	C12	EHD860 C12	PLUNGER SEAL	1
	C13	EHD860 C13	STEP-SEAL	1
	C14	EHD860 C14	O-RING	1
	C15			
	C16	EHD860 C16	O-RING	1
	C17	EHD860 C17	ANTI-EXTRUSION	1
	C18			
	C19			
	C20			
	C21			
	C22			
	C23			
	C24			
	C25			
	C26			
	C27			
	C28			
	C29	EHD860 C29	MALE CONNECTOR	1
	C30	EHD860 C30	SCREW	2
	C31	EHD860 C31	SCREW	1
	C32	EHD860 C32	CIRCLIPS	8
	C33	EHD860 C33	RING	2
	C34	EHD860 C34	RING	2
	C35	EHD860 C35	VIS	2

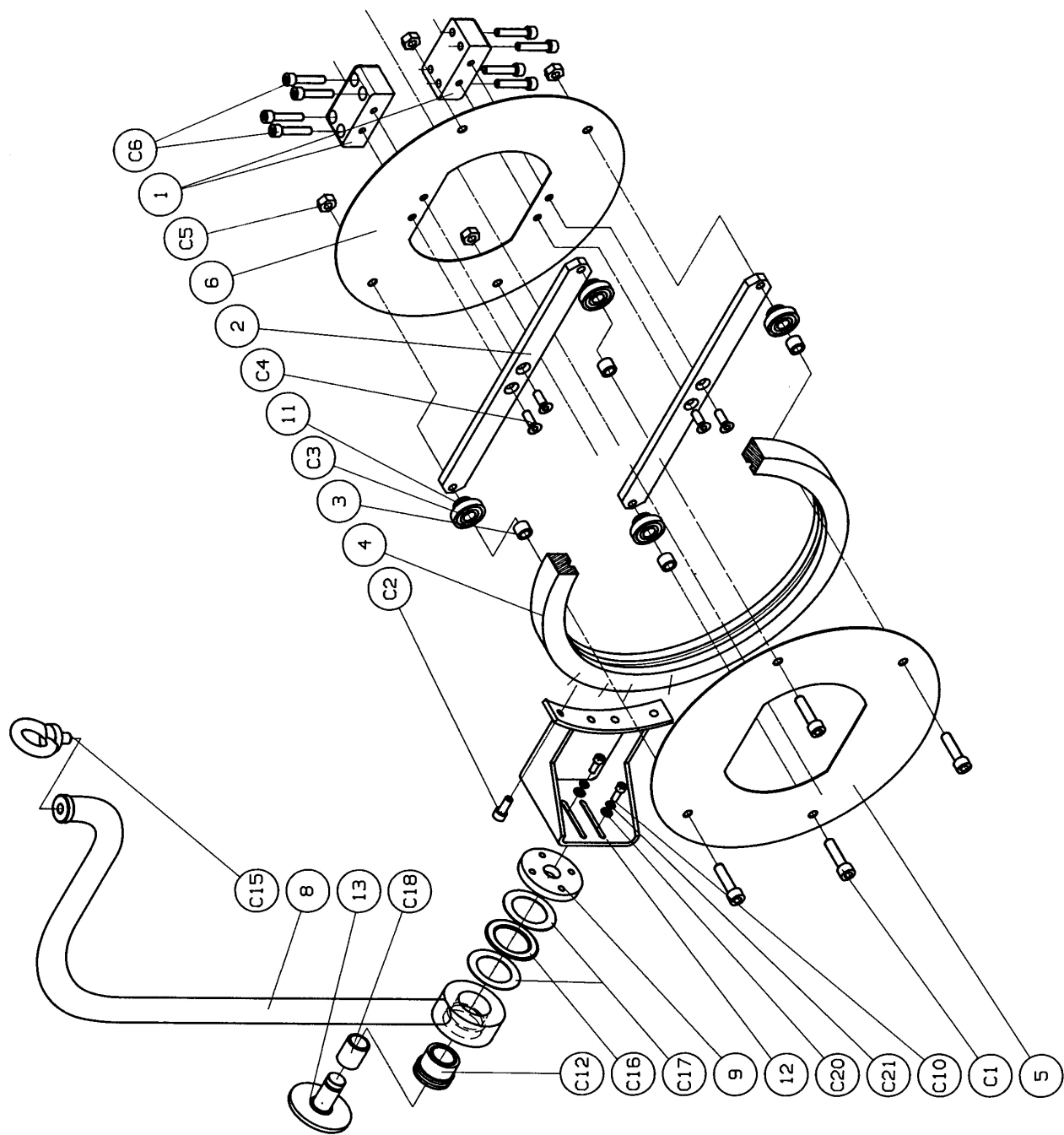


EHD 880 S

KEY N°	IDENTIFICATION		DESIGNATION	QTY
	PART NUMBER	DESCRIPTION		
	01	EHD860 001	END CAP	1
	02	EHL880 002	CYLINDER BODY	1
	03	EHL880 003	PLUNGER	1
	04	EHD860 004	PISTON	1
	05	EHD880 005	PISTON ROD	1
	06	EHD880 006	LEVER	4
	07	EHL880 007	LEVER PIN	4
	08	EHD880 008	SPREADER ARM	2
	09	EHL880 009	SPREADER PIN	2
	10	EHD880 010	1/2 YOKE	2
	11			
	12	EHD880 012	SPREADER TIP	2
	13	EHL880 013	DOWEL PIN	2
	14	EHL880 014	RING	2
	15	CHE2100 013	SEAL BUSHING	1
	16	CHE2100 014	LOCK NUT	1
	17	EHD880 017	TIP PIN	2
	18	EHD880 018	PISTON NUT	1
	19			
	20	EHD880 020	MODIFIED SLEEVE	4
	28	PCS	CONTROL HANDLE WITH SECURITY	1
	29	EHD880 029	WELD DESTRUCTOR TIP	2
	30	EHD860 018	PISTON NUT	1
	C01			
	C02	EHD880 C02	SCREW	2
	C03			
	C04	EHD880 C04	NUT	2
	C05	EHD880 C05	PISTON SEAL	1
	C06	EHD880 C06	GLYD-RING	1
	C07	EHD880 C07	O-RING	1
	C08	EHD880 C08	O-RING	1
	C09	EHD880 C09	O-RING	1
	C10	EHD880 C10	GLYD-RING	1
	C11	EHD880 C11	WIPER	1
	C12	EHD880 C12	PLUNGER SEAL	1
	C13	EHD880 C13	STEP-SEAL	1
	C14	EHD880 C14	O-RING	1
	C15			
	C16	EHD880 C16	O-RING	1
	C17	EHD880 C17	ANTI-EXTRUSION	1
	C18			
	C19			
	C22			
	C23			
	C24			
	C25			
	C26			
	C27			
	C28	EHD880 C28	O-RING	2
	C29	EHD880 C29	CONNECTOR	1
	C30	EHD880 C30	SCREW	2
	C31	EHD880 C31	O-RING	2
	C32	EHD880 C32	CIRCLIPS	8
	C33	EHD880 C33	SCREW	2
	C34			

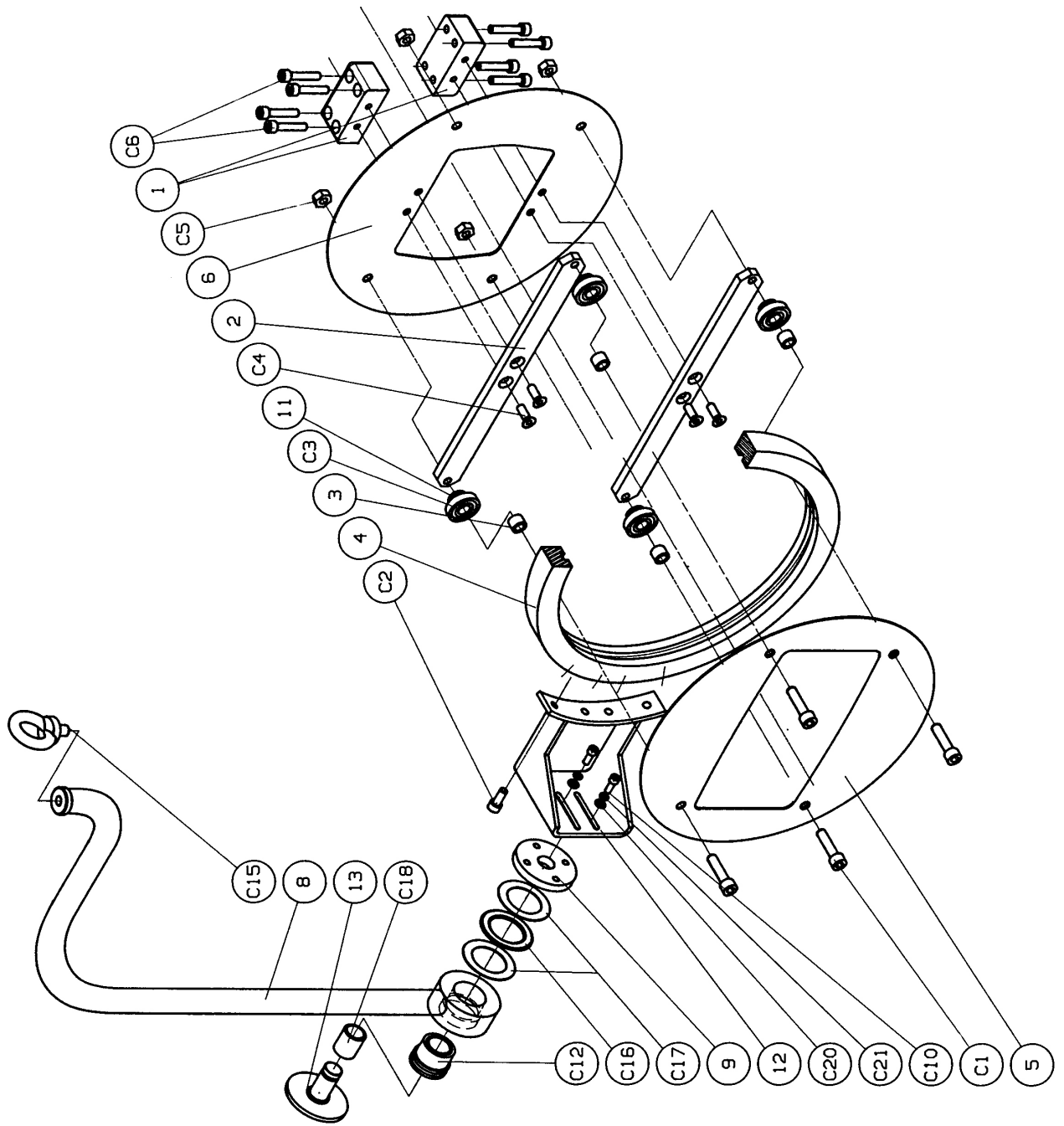
EHD 550 S

KEY N°	IDENTIFICATION		DESIGNATION	QTY
	PART NUMBER	DESCRIPTION		
	01	EHSL550 001	END CAP	1
	02	EHD550 002	CYLINDER BODY	1
	03	EHSL550 003	PLUNGER	1
	04	EHSL550 004	PISTON	1
	05	EHSL550 005	PISTON ROD	1
	06	EHSL550 006	LEVER	4
	07	EHD550 007	LEVER PIN	4
	08	EHSL550 008	SPREADER ARM	2
	09	EHSL550 009	SPREADER PIN	2
	10	EHD550 010	1/2 YOKE	2
	11			
	12	EHD880 012	SPREADER TIP	2
	13	EHL880 013	DOWEL PIN	2
	14	EHL880 014	RING	2
	15	CHE2100 013	SEAL BUSHING	1
	16	CHE2100 014	LOCK NUT	1
	17	EHD880 017	TIP PIN	2
	18	EHD550 018	WELD DESTRUCTOR TIP	2
	19			
	20	PCS	CONTROL HANDLE WITH SECURITY	1
	21	EHD550 021	YOKE SLEEVE	4
	22	EHD550 022	ARM AND ROD SLEEVE	6
	23	EHD550 023	LEVER SLEEVE	8
	24	AEH 007	WASHER	2
	25	PHS 020	SECURITY CONTACT	1
	26	PHS 021	SCREW Hc M10	1
	27	PCH 012	SPRING	1
	28	EHD550S	PISTON NUT	1
	C01			
	C02	EHD550 C02	SCREW	2
	C03	EHD550 C03	CIRCLIP	4
	C04	EHD550 C04	NUT	2
	C05	EHD550 C05	GLYD RING	1
	C06	EHD550 C06	O-RING	1
	C07	EHD550 C07	PISTON SEAL	2
	C08	EHD550 C08	O-RING	1
	C09	EHD550 C09	O-RING	1
	C10	EHD550 C10	GLYD-RING	1
	C11	EHD550 C11	WIPER	1
	C12	EHD550 C12	PLUNGER SEAL	2
	C13	EHD550 C13	O-RING	1
	C14	EHD550 C14	STEP SEAL	1
	C15	EHD550 C15	O-RING	1
	C16	EHD550 C16	O-RING	2
	C17			
	C18	EHD550 C18	MALE CONNECTOR	1
	C19	EHD550 C19	SCREW	2
	C20	EHD550 C20	SCREW	2
	C21			



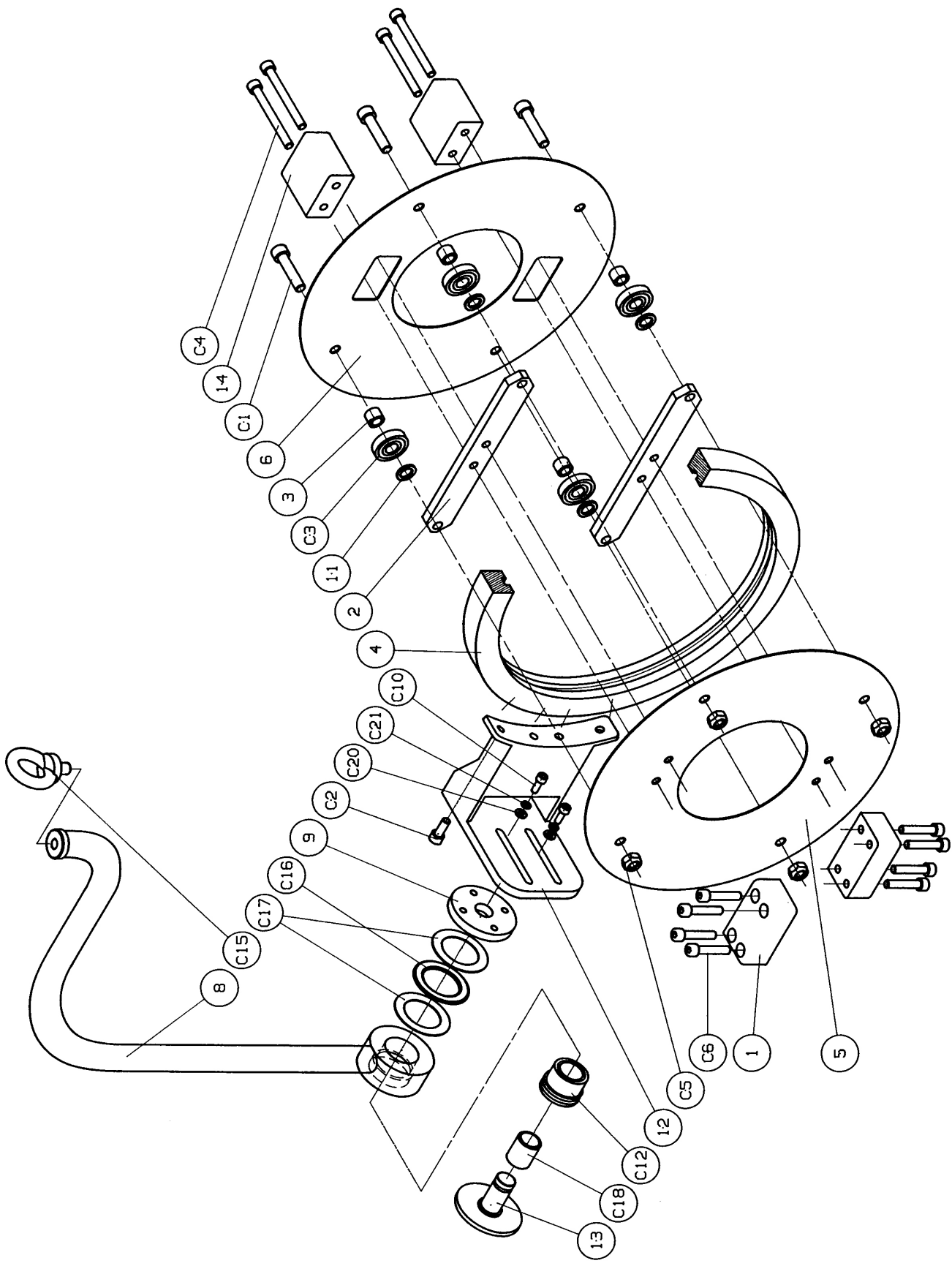
SGC860

KEY N°	IDENTIFICATION		DESIGNATION	QTY
	PART NUMBER	DESCRIPTION		
01	SG860 001		FIXING BLOCK	2
02	SG860 002		ROLL CARRIER ARM	2
03	SG860 003		BRACE	4
04	SGC860 004		ROTATING RING	1
05	SG860 005		FRONT PROTECTION	1
06	SG860 006		REAR PROTECTION	1
07				
08	SGC860 008		SUSPENSION HANDLE	1
09	SGC860 009		FIXED HUB	2
10				
11	SG860 011		BEARING WASHER	4
12	SGC860 012		BRACKET	
13	SGC860 013		COVER	
14				
15				
16				
17				
18				
C01	SGC860 C01		SCREW	4
C02	SGC860 C02		SCREW	6
C03	SGC860 C03		BEARING	4
C04	SGC860 C04		SCREW	4
C05	SGC860 C05		RECESSED NUT	4
C06	SGC860 C06		SCREW	8
C07				
C08				
C09				
C10	SGC860 C10		SCREW	4
C11				
C12	SGC860 C12		BEARING	1
C13				
C14	SGC860 C14			
C15	SGC860 C15		HOLDING RING	1
C16	SGC860 C16		NEEDLE THRUST	1
C17	SGC860 C17		THIN WASHER	2
C18	SGC860 C18		INTERIOR RING	1
C19				
C20	SGC860 C20		WIDE WASHER	4
C21	SGC860 C21		GROWER WASHER	4



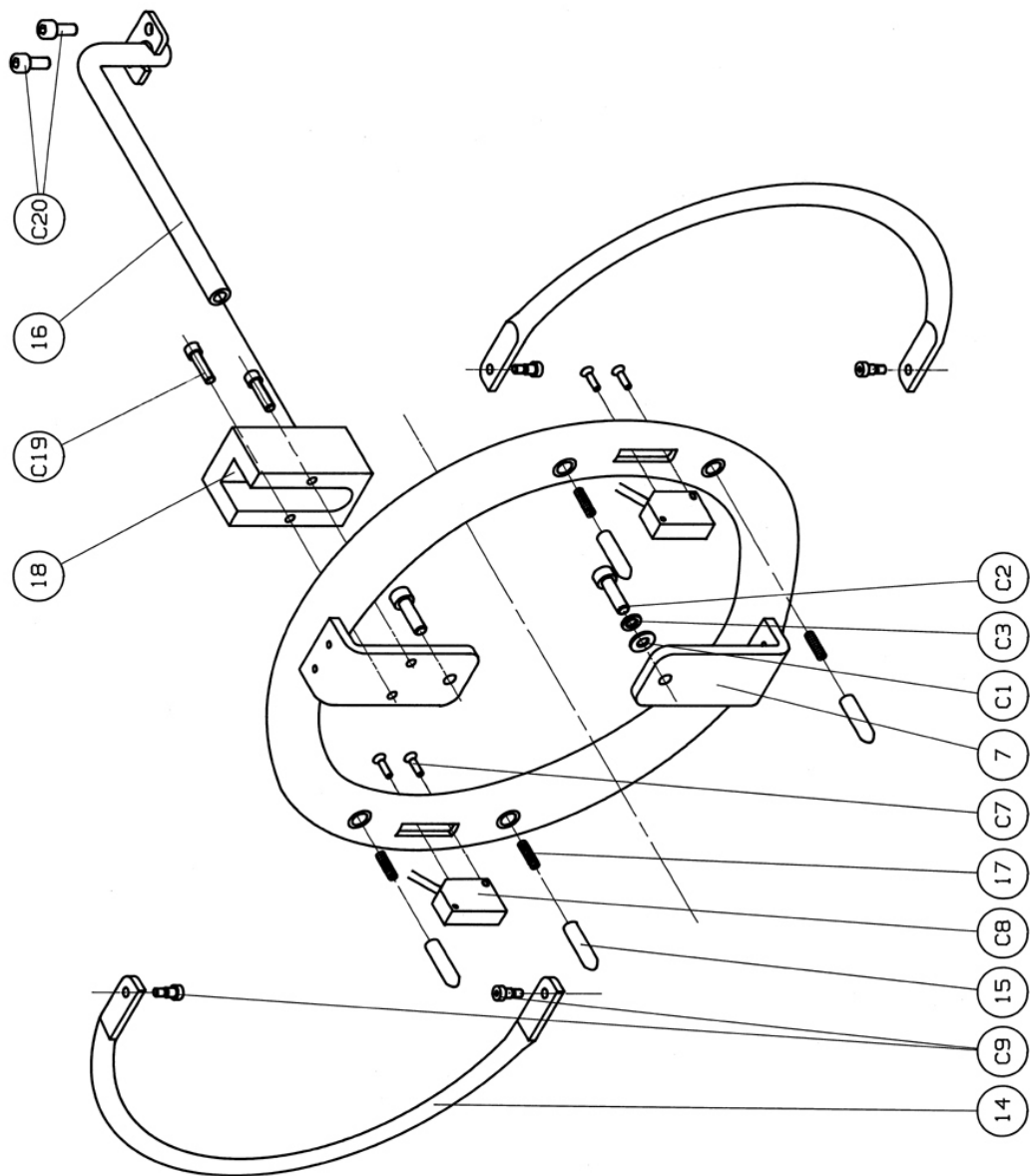
SGC880

KEY N°	IDENTIFICATION		DESIGNATION	QTY
	PART NUMBER	DESCRIPTION		
01	SG860 001		FIXING BLOCK	2
02	SG860 002		ROLL CARRIER ARM	2
03	SG860 003		BRACE	4
04	SGC860 004		ROTATING RING	1
05	SG880 005		FRONT PROTECTION	1
06	SG880 006		REAR PROTECTION	1
07				
08	SGC860 008		SUSPENSION HANDLE	1
09	SGC860 009		FIXED HUB	2
10				
11	SG860 011		BEARING WASHER	4
12	SGC860 012		BRACKET	
13	SGC860 013		COVER	
14				
15				
16				
17				
18				
C01	SGC880 C01		SCREW	4
C02	SGC880 C02		SCREW	6
C03	SGC880 C03		BEARING	4
C04	SGC880 C04		SCREW	4
C05	SGC880 C05		RECESSED NUT	4
C06	SGC880 C06		SCREW	8
C07				
C08				
C09				
C10	SGC880 C10		SCREW	4
C11				
C12	SGC880 C12		BEARING	1
C13				
C14	SGC880 C14			
C15	SGC880 C15		HOLDING RING	1
C16	SGC880 C16		NEEDLE THRUST	1
C17	SGC880 C17		THIN WASHER	2
C18	SGC880 C18		INTERIOR RING	1
C19				
C20	SGC880 C20		WIDE WASHER	4
C21	SGC880 C21		GROWER WASHER	4



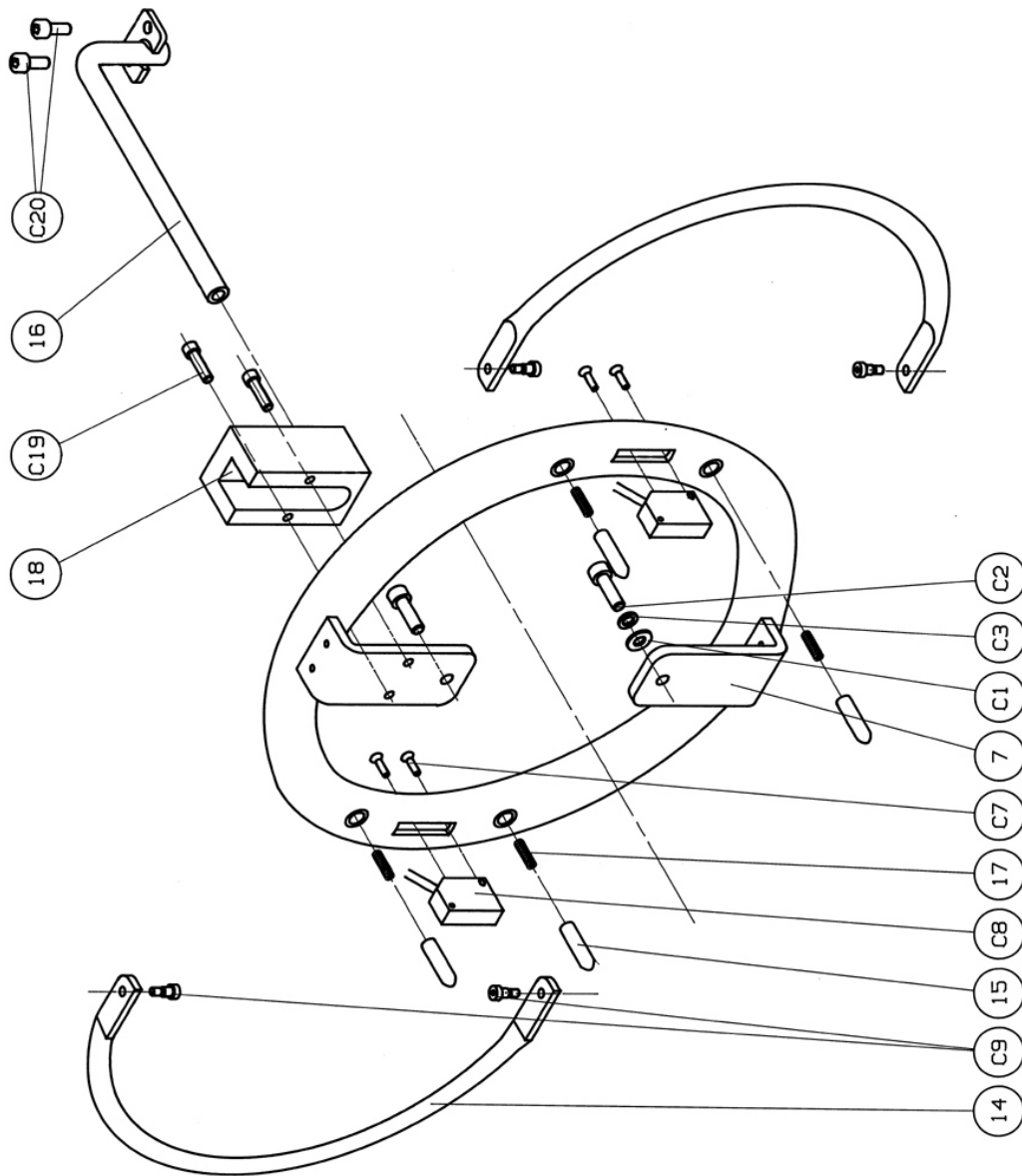
SGC550

KEY N°	IDENTIFICATION		DESIGNATION	QTY
	PART NUMBER	DESCRIPTION		
01	SGC550 001		FIXING BLOCK	2
02	SGC550 002		ROLL CARRIER ARM	2
03	SG860 003		BRACE	4
04	SGC860 004		ROTATING RING	1
05	SGC550 005		FRONT PROTECTION	1
06	SGC550 006		REAR PROTECTION	1
07				
08	SGC860 008		SUSPENSION HANDLE	1
09	SGC860 009		FIXED HUB	2
10				
11	SG860 011		BEARING WASHER	4
12	SGC550 012		BRACKET	1
13	SGC860 013		COVER	1
14	SGC550 014		HANDLE SPACER	2
15				
16				
17				
18				
C01	SGC550 001		SCREW	4
C02	SGC550 C02		SCREW	6
C03	SGC550 C03		BEARING	4
C04	SGC550 C04		SCREW	4
C05	SGC550 C05		RECESSED NUT	4
C06	SGC550 C06		SCREW	8
C07				
C08				
C09				
C10	SGC550 C10		SCREW	4
C11				
C12	SGC550 C12		BEARING	1
C13				
C14				
C15	SGC550 C15		HOLDING RING	1
C16	SGC550 C16		NEEDLE THRUST	1
C17	SGC550 C17		THIN WASHER	2
C18	SGC550 C18		INTERIOR RING	1
C19				
C20	SGC550 C20		WIDE WASHER	4
C21	SGC550 C21		GROWER WASHER	4



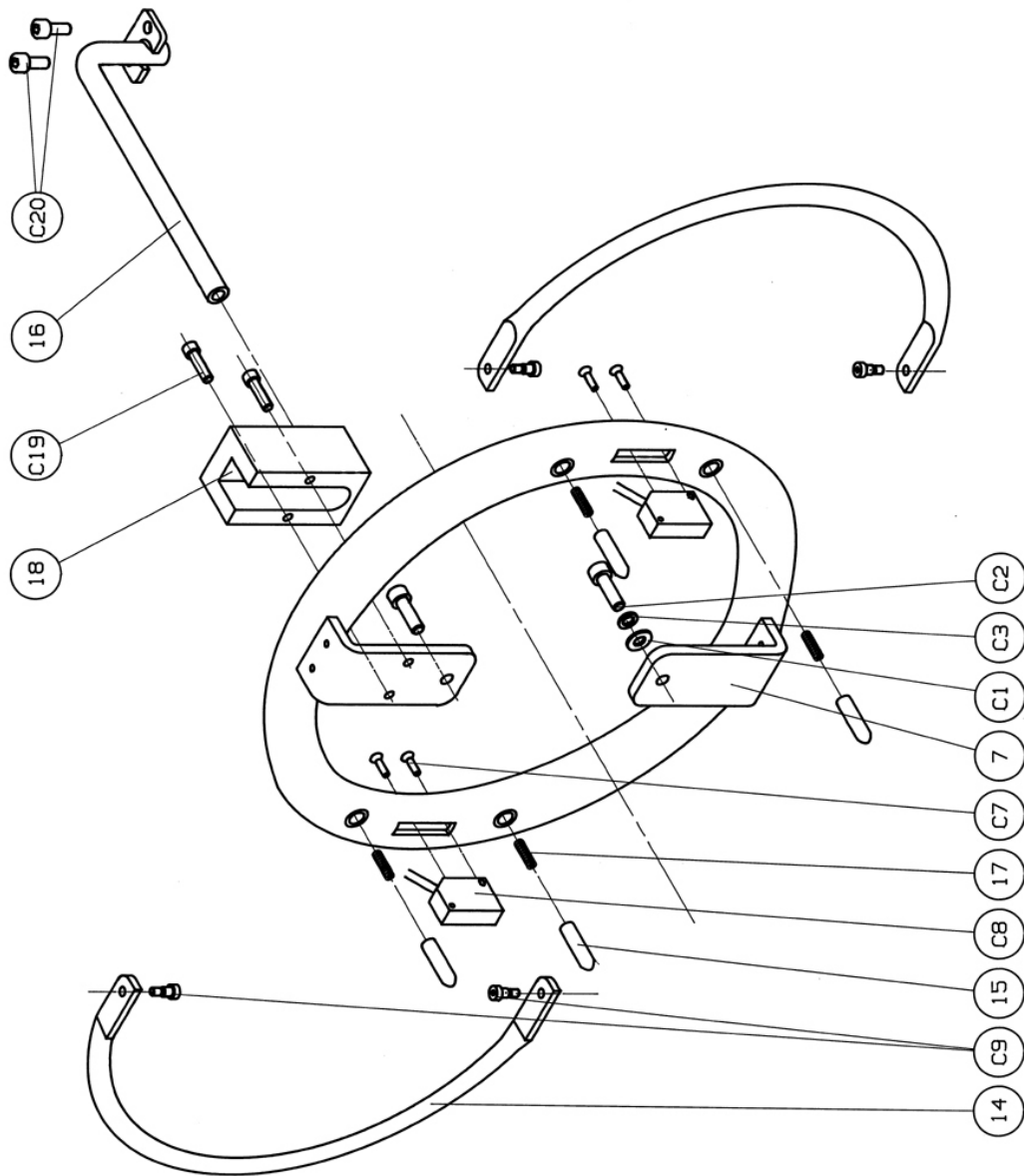
VMS860

KEY N°	IDENTIFICATION		DESIGNATION	QTY			
	PART NUMBER	DESCRIPTION					
01	VMS860 007		SAFETY HOLDING HANDLE	1			
02							
03							
04							
05							
06							
07							
08							
09							
10							
11	VMS860 014		CONTROL LEVER	2			
12							
13							
14							
15					VMS 015	STOP AND RECALL KEY	4
16					VMS860 016	GROMMET TUBE	1
17					VMS 017	SPRING	4
18					VMS860 018	GROMMET	1
C01	VMS860 C01	LARGE WASHER	1				
C02	VMS860 C02	SCREW	2				
C03	VMS860 C03	GROWER WASHER	1				
C04	VMS860 C07		SCREW	4			
C05							
C06							
C07							
C08					VMS860 C08	CONTACTOR	2
C09					VMS860 C09	SHOULDERED SCREW	4
C10							
C11							
C12							
C13	VMS860 C19		SCREW	2			
C14							
C15							
C16							
C17	VMS860 C20		SCREW	2			
C18							
C19							
C20			SCREW	2			



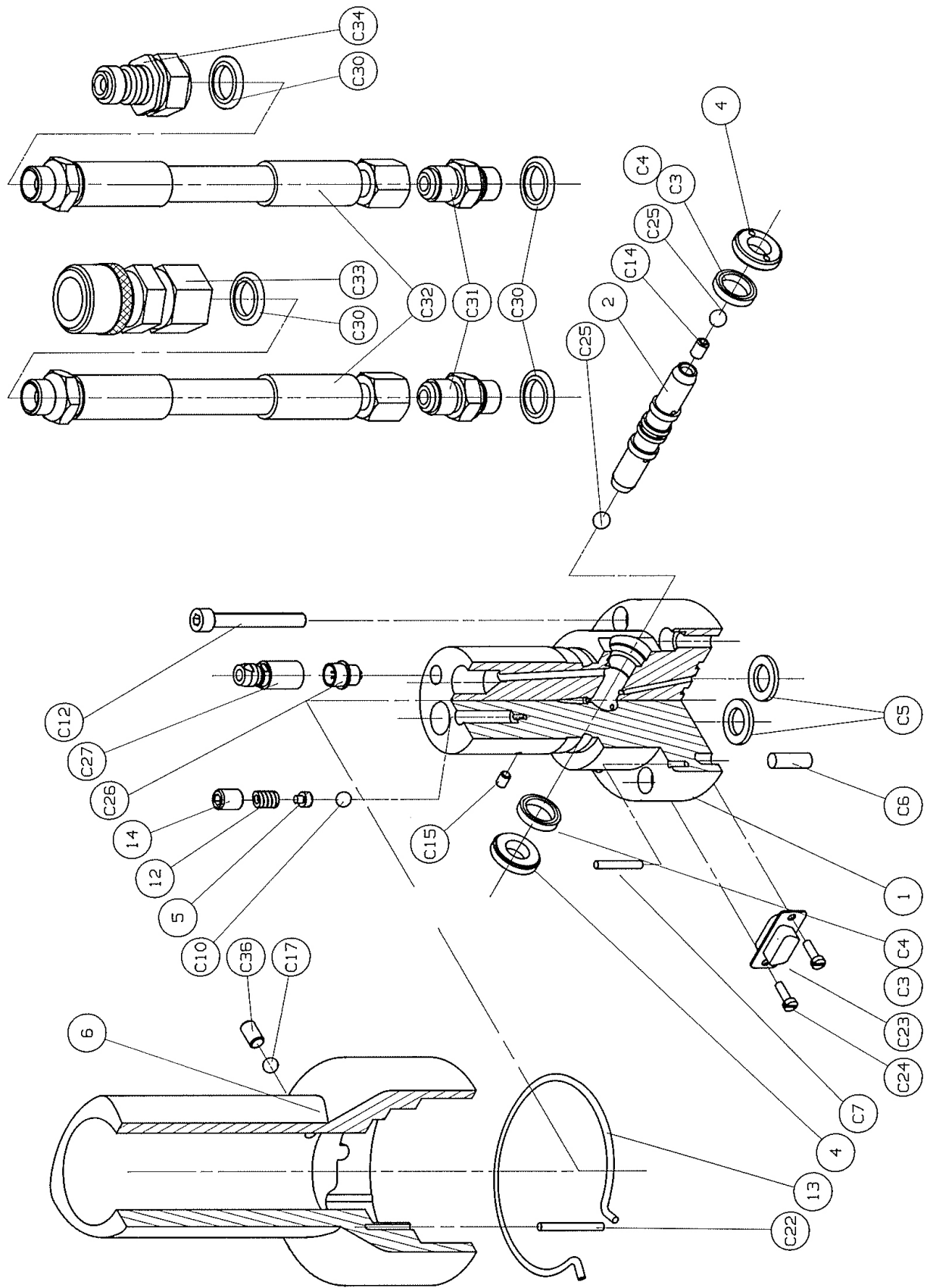
VMS880

KEY N°	IDENTIFICATION		DESIGNATION	QTY
	PART NUMBER	DESCRIPTION		
01				
02				
03				
04				
05				
06				
07	VMS860 007		SAFETY HOLDING HANDLE	1
08				
09				
10				
11				
12				
13				
14	VMS860 014		CONTROL LEVER	2
15	VMS 015		STOP AND RECALL KEY	4
16	VMS880 016		GROMMET TUBE	1
17	VMS 017		SPRING	4
18	VMS860 018		GROMMET	1
C01	VMS880 C01		LARGE WASHER	1
C02	VMS880 C02		SCREW	2
C03	VMS880 C03		GROWER WASHER	1
C04				
C05				
C06				
C07	VMS880 C07		SCREW	4
C08	VMS880 C08		CONTACTOR	2
C09	VMS880 C09		SHOULDERED SCREW	4
C10				
C11				
C12				
C13				
C14				
C15				
C16				
C17				
C18				
C19	VMS880 C19		SCREW	2
C20	VMS880 C20		SCREW	2



VMS550

KEY N°	IDENTIFICATION		DESIGNATION	QTY
	PART NUMBER	DESCRIPTION		
01	VMS550 007		SAFETY HOLDING HANDLE	1
02				
03				
04				
05				
06				
07				
08				
09				
10				
11	VMS860 014		CONTROL LEVER	2
12				
13				
14				
15				
16				
17				
18				
14	VMS 015		STOP AND RECALL KEY	4
16	VMS550 016		GROMMET TUBE	1
17	VMS 017		SPRING	4
18	VMS550 018		GROMMET	1
C01	VMS550 C01		LARGE WASHER	1
C02	VMS550 C02		SCREW	2
C03	VMS550 C03		GROWER WASHER	1
C04	VMS550 C07		SCREW	4
C05				
C06				
C07				
C08				
C09				
C10				
C11				
C12				
C13	VMS550 C08		CONTACTOR	2
C14				
C15				
C16				
C17				
C18				
C19				
C20				
C19	VMS550 C19		SCREW	2
C20	VMS550 C20		SCREW	2



PCHRS

KEY N°	IDENTIFICATION		DESIGNATION	QTY
	PART NUMBER	DESCRIPTION		
01	PCHRS 001		HANDLE BODY	1
02	PCH 002		DIRECTIONAL VALVE	1
03				
04	PCH 004		SCREW M20X100	2
05	PCH 005		SPRING GUIDE	1
06	PCH 006		POYURETHANE HANDLE	1
07				
08				
09				
10				
11				
12	D1S 003		SAFETY SPRING	1
13	PCH 013		RETURN SPRING	1
14	PCH 014		SAFETY SCREW	1
C01				
C02				
C03	PCHRS C03		O RING	2
C04	PCHRS C04		STEAP SEAL	2
C05	PCHRS C05		O RING	4
C06	PCHRS C06		DOWEL PIN	1
C07	PCHRS C07		DOWEL PIN	1
C08				
C09				
C10	PCHRS C10		BALL	1
C11				
C12	PCHRS C12		SCREW	6
C13				
C14	PCHRS C14		SCREW	1
C15	PCHRS C15		SCREW	1
C16				
C17	PCHRS C17		BALL	1
C18				
C19				
C20				
C21	PCHRS C21		O RING	1
C22	PCHRS C22		DOWEL PIN	1
C23	PCHRS C23		FEMALE CONNECTOR	1
C24	PCHRS C24		SCREW	2
C25	PCHRS C25		BALL	2
C26	PCHRS C26		MALE SOCKET	1
C27	PCHRS C27		FEMALE CONNECTOR	1
C28	PCHRS C28		ELECTRIC WIRE	1
C29	PCHRS C29		MALE CONNECTOR	1
C30	PCHRS C30		RING BS	4
C31	PCHRS C31		ADAPTATER	2
C32	PCHRS C32		HYDRAULIC HOSE	2
C33	PCHRS C33	10 115 6247	FEMALE COUPLER	1
C34	PCHRS C34	10 115 1250	MALE COUPLER	1
C35	PCHRS C35		PLASTIC SHEATH	1
C36	PCHRS C36		SCREW	1

HYDR'AM[®]



HYDR'AM[®]

6, rue des frères Lumière - 69 720 St Bonnet de Mure
☎: 33 (0) 4 72 48 90 05 - fax: 33 (0) 4 72 48 90 03