

Automated ELISA or Biochemistry Programmable Analyzer

Typical Biochemistry throughput	Up to 200 endpoint reactions per hour, up to 170 kinetic reactions per hour
Min. and Max. pipetting volume	2 µL - 1.95 mL
Precision for volumes <5 µL	<2.5% CV
Precision for volume >5 µL	<1% CV
Maximum number of specimens	96 (including calibrators and controls)
Maximum number of reagents	Typically 27 to 44
Standard reagent rack	27 positions, other configurations optional
Reaction vessel	Standard microwell plates or strips
Instrument bottles	2L wash 1L rinse (or second wash) 2L waste bottle 1L priming bottle

Thermal control Incubation timing is software controlled and automatically optimized
Well, probe and tubing; ambient or 37°C (other options available)

Wash head	8-probe, automatic prime and rinse
Programs	Wash protocols are user-programmable for aspirate, dispense, soak, mix
Light Source	Tungsten-Xenon lamp
Optical design	Reads bichromatic absorbance in four channels, user-selected monochromatic or bichromatic results 8 position filter wheel : 340 - 700 nm
Photometric accuracy	± (1% of the reading +0.005A from 0 to 1.0A) ± (2% of the reading from 1.0 to 3.0A)

Software format	USB thumb drive and Internet upgrades
Supported operating systems	Windows® 7, 8 and 10
Minimum system requirements	Operating System dependent* please see Windows® system requirements
Calculation modes	Single standard, factor, fixed time kinetics, kinetics by standard or factor, qualitative absorbance cutoff calculations, multi-calibrator point-to-point, linear regressions, log-logit, cubic spline, and nonlinear regressions (curve fit)

LIS integration LIS integration available, patient database stores test results

Dimensions & weight	92.075 cm W. x 54.61 cm D. x 47.3075 cm H. Approx. weight = 35 kg 36.250" W. x 21.500" D. x 18.625" H. Approx. weight = 77 lbs (Allow additional 6" W for waste and wash containers)
--------------------------------	--

ISO 13485:2016



AWARENESS
TECHNOLOGY, INC.
www.awaretech.com

Awareness Technology, Inc. USA & International
tel: +1 772 283 6540 fax: +1 772 283 8020

Awareness Technology, Inc. Europe
tel: +43 (0) 2236 892465 fax: +43 (0) 2236 892464

Awareness Technology, Inc. Asia & Africa
tel: +971 (06) 557 80 58 fax: +971 (06) 557 80 59

VESTA
Laboratory Equipment
وسنا تجهیزات یارن

No 5, Shekarabi Alley, Naz Street, Zafar district, Shariati Ave, Tehran, Iran

021 72801
vestalab.ir
@vesta_tajhiz_part
Info@vestalab.ir

312910E

www.awaretech.com

ChemWell® 2910

Programmable Open System

Automated ELISA/Biochemistry Analyzer

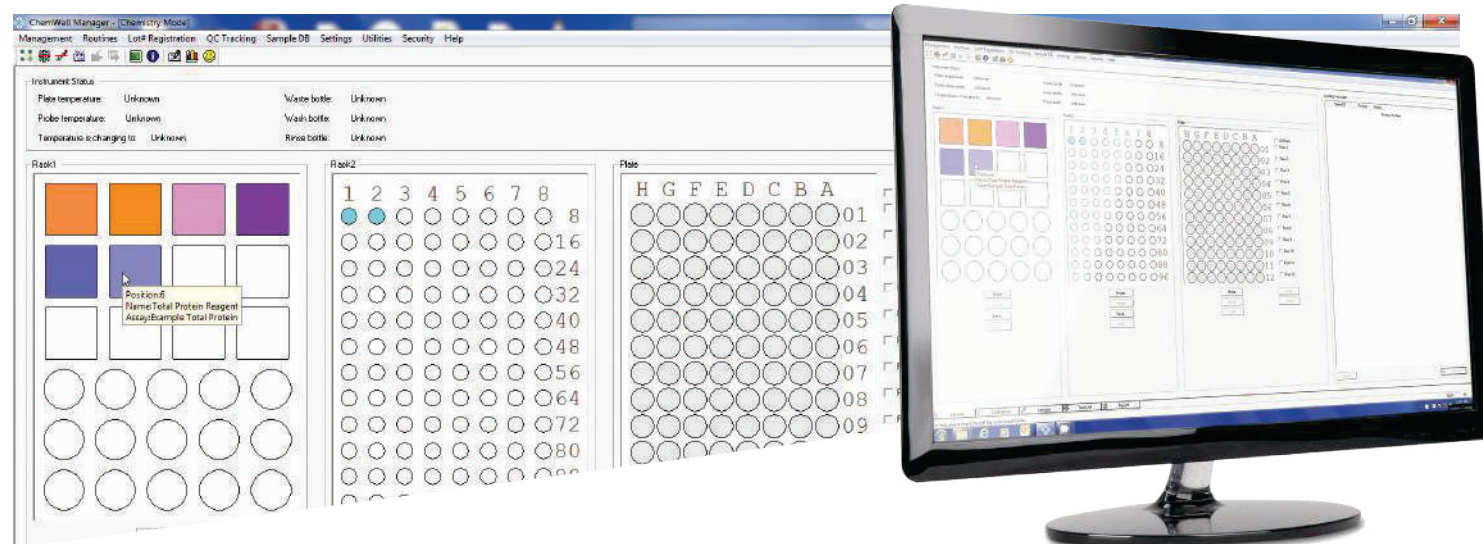


- Accurate results, dependable performance
- Automated analyzer for microwell based ELISA or Biochemistry
- Versatile open system
- Cost-effective operation

The Ultimate In Flexibility

AWARENESS
TECHNOLOGY, INC.

VESTA
Laboratory Equipment
وسنا تجهیزات یارن



Graphic Interface for Visual Reference that mirrors the process stages of the analyzer.

ChemWell 2910, Fully Automated Computer Controlled, User Programmable, Open System Analyzer, Is Two Systems In One!

ELISA Mode

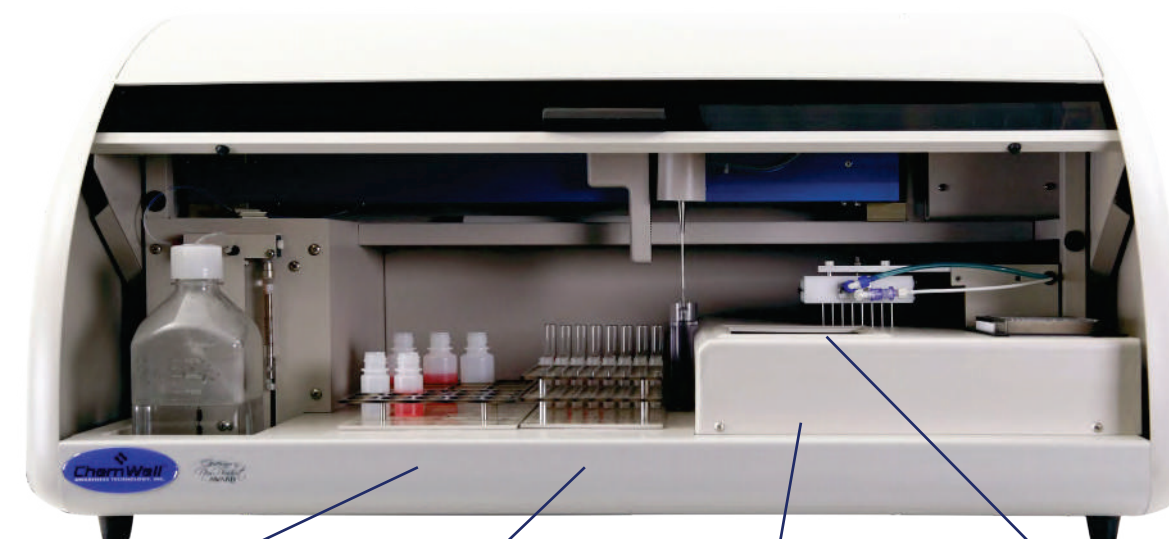
- Analyze ELISA assays in standard 96 well coated Microplate
- Mix multiple assays on a single plate even if timing is different
- Multiple calculation modes

Biochemistry Mode

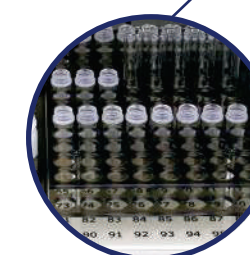
- Analyze chemistry assays in standard 96 well uncoated microwells
- Random access kinetic and endpoint assays
- 200 Tests per hour

ChemWell 2910 Provides:

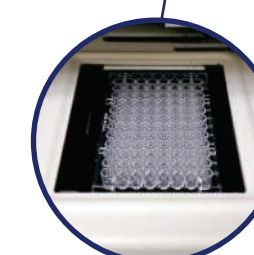
- ◆ Ability to process microwell based ELISA or biochemistry assays using the same analyzer
- ◆ An open system with user definable ability to program any assay menu
- ◆ Customizable and expandable protocols
- ◆ Proven technology and performance - True walk away capabilities
- ◆ World class customer support
- ◆ Ease of operation through intuitive design
- ◆ User friendly Assay Editor System software that prevents process timing conflicts
- ◆ Flexible placement of reagent and samples for optimization
- ◆ Complete patient database available with search and tracking system
- ◆ Flexible reporting options including export to excel or LIS



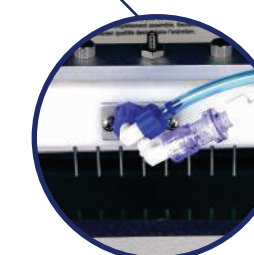
Reagent Rack
up to 44 Reagents



Sample Rack
96 Samples



Reaction Vessel



Washer

ChemWell

Versatile • Flexible • Reliable • Accurate • Programmable • ELISA & Biochemistry Analyzer



Optional Reagent Cooling Accessory
Maintains reagents at 12°C to 15°C below ambient temperature

The Ultimate in Flexibility

The same instrument that automatically processes microwell based ELISA tests, is also a fully automated 200 test per hour routine biochemistry analyzer. The two in one functionality makes ChemWell 2910 an ideal addition to any laboratory that is looking to maximize efficiency, savings, and improve productivity without sacrificing valuable benchtop work space.

Key ChemWell® 2910 Features:

- ◆ On Board Pre-dilution Options in the Rack or Plate
- ◆ Fluid Handling - aspirates and dispenses from 2 µL to 1.95 m
- ◆ On-Board programing for work flow optimization
- ◆ On-Board storage of QC, calibrator data and Levey-Jennings
- ◆ 8 Filter wheel with 340 nm – 700 nm Range
- ◆ On-Board Plate Washer, Mixer and Incubation
- ◆ Self-cleaning liquid sensing probe
- ◆ Security Lock Out Options - Data Archive - unlimited capacity
- ◆ Create a repository of programmed assays using the included assay editor

