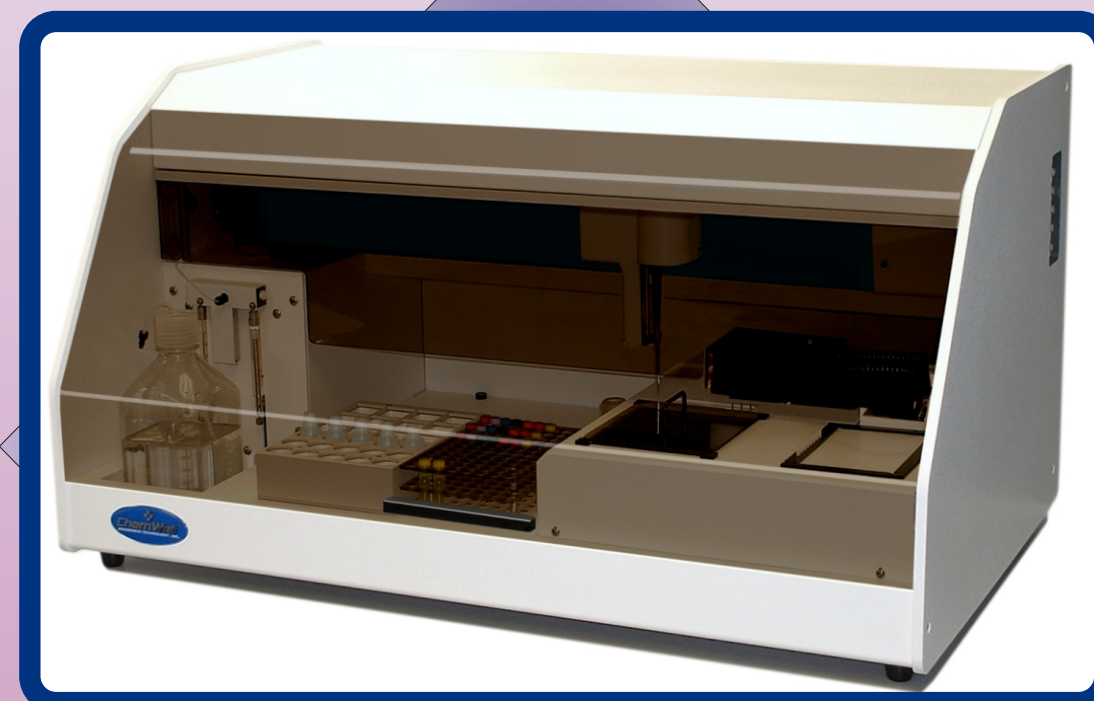




## ChemWell® 2902 Technical Specifications

• <b>Typical throughput</b>	<b>General</b> up to 200 endpoint reactions per hour, up to 170 kinetic reactions per hour
• <b>Typical reaction volume</b>	200µL or less
• <b>Dimensions</b>	34"(86cm) left to right, 18"(40cm) height, 21"(51cm) front-to-back Approximate weight 100 lbs(45kg)
• <b>Capabilities</b>	<b>Reagent and Sampling Dispensing</b> dilution, pre-dilution, dispensing single or multiple reagents
• <b>Pumps</b>	two syringe pumps, sized 50µL and 2.5mL
• <b>Probes</b>	316 stainless steel for maximum reagent compatibility, level sensing
• <b>Min. and Max. Volume</b>	2µL - 1.95mL
• <b>Precision for volumes &lt;5µL</b>	<2.5% CV
• <b>Precision for volumes &gt;5µL</b>	<2% CV
• <b>Maximum number of specimens</b>	96 (including calibrators and controls)
• <b>Maximum number of reagents</b>	typically 27 to 44 or more (you can program reagents to go in the sample rack; assorted replaceable racks and custom designed racks are available for various bottle sizes)
• <b>Standard reagent rack</b>	27
• <b>Reaction vessel</b>	standard micro wells, strips or plates
• <b>Instrument bottles</b>	1L priming bottle drain bottle (not supplied)
• <b>Thermal control</b>	<b>Incubating, timing and temperature control</b> well, probe, and tubing; ambient or 37°C (other options also available)
• <b>Cooling control</b>	RCA, Reagent Cooling Accessory cools to 2° to 15°C below ambient through Peltier thermoelectric modules connected to an external controller.
• <b>Optical design</b>	<b>Reading</b> reads absorbance in 4 simultaneous channels, NIST traceable calibration user selected monochromatic or bichromatic results 8 position filter wheel: 340, 405, 450, 505, 545, 600, 630, 700 or custom long life, hard coat, ion assisted deposition, 10nm typical half bandpass
• <b>Interference filters</b>	
• <b>Linear Range</b>	-0.2 to 3.0A
• <b>Photometer Accuracy</b>	± 1% or better
• <b>Format</b>	<b>Software</b> CD-ROM and internet upgrades
• <b>Supports</b>	Windows® 98, 2000, NT 4.0, or XP (Computer not supplied)
• <b>Minimum system</b>	Pentium® II/233 MHz, 64 MB RAM, VGA monitor, 100MB free drive space serial port or USB port with serial adapter
• <b>Recommended system</b>	Pentium® II/333 Mhz, 128MB RAM, Windows® 98 or higher, CD drive, SVGA monitor
• <b>Calculation modes</b>	absorbance, single standard, factor, fixed time kinetics, kinetics by multipoint, kinetics by standard or factor, multicalibrator point to point, linear regressions log logit and more
• <b>Self monitoring modes</b>	lamp, filters, mechanical function, and more
• <b>QC options</b>	store control data, print Levey Jennings or QC range plots
• <b>Other</b>	LIS compatible, patient data base stores test results
• <b>Certifications</b>	NRTL Listed, CE Marked Awareness Technology is certified under ISO 13485:2003

# ChemWell® 2902



## Automated Biochemistry for the modern laboratory





# ChemWell 2902

Automated Biochemistry for the modern laboratory



An open system you can program for the reagent applications of your choice

ChemWell® is a completely open system that is easy to program.

Set up assays, routine jobs, quality control, panels, even index calculations to suit your laboratory. A password system and log of changes protect your programs. Choose from a large selection of monitoring and reporting styles.

Precise pipetting of low volume specimens, elimination of carry over, and careful control of temperature are all essential for reliable results.

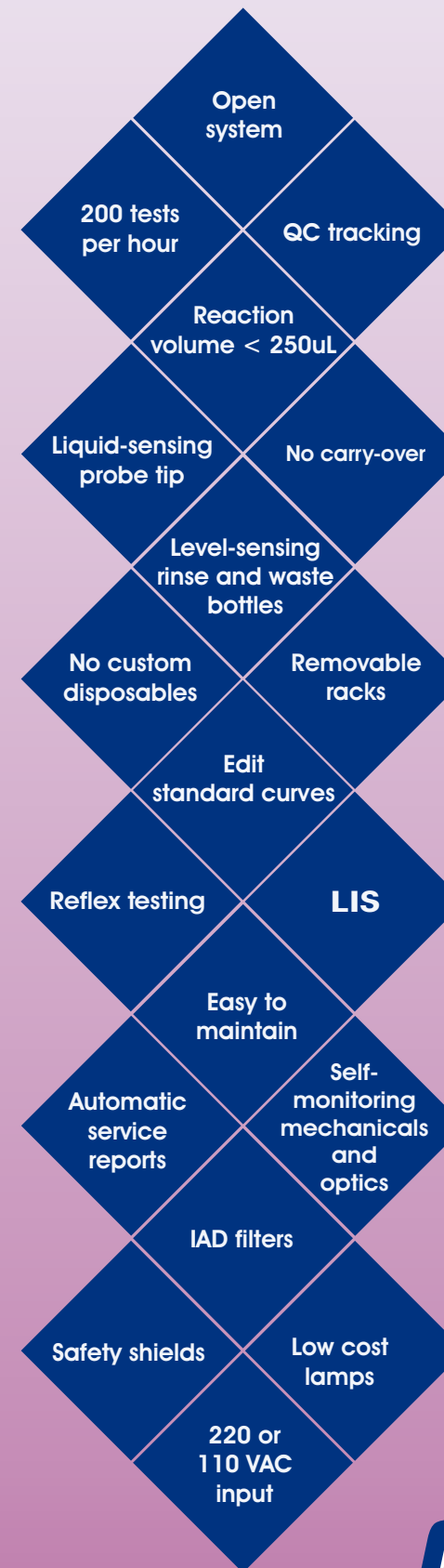
ChemWell® can make pre-dilutions, however this is seldom necessary since a high level of precision is achieved even with a 2uL sample. Carry over is eliminated without the need for disposable pipet tips. A unique wash cup assures cleaning inside and out. In addition, extra washes may be programmed for any particularly sensitive assay. With a completely open system you can program additional wash volume, or increase the number of washes, or even direct the probe to pick up and dispense a probe cleaning solution after each specimen. ChemWell® can process assays at ambient temperature or 37C. An incubator is provided for biochemistry wells to assure precise kinetic reactions. The probe is also temperature-controlled to deliver 37C reagents. An optional reagent cooling accessory (RCA) is available to protect reagents from ambient heat. Removable racks can be refrigerated, pre-loaded and ready for the



27 reagents, 96 samples



Probe washes inside and out

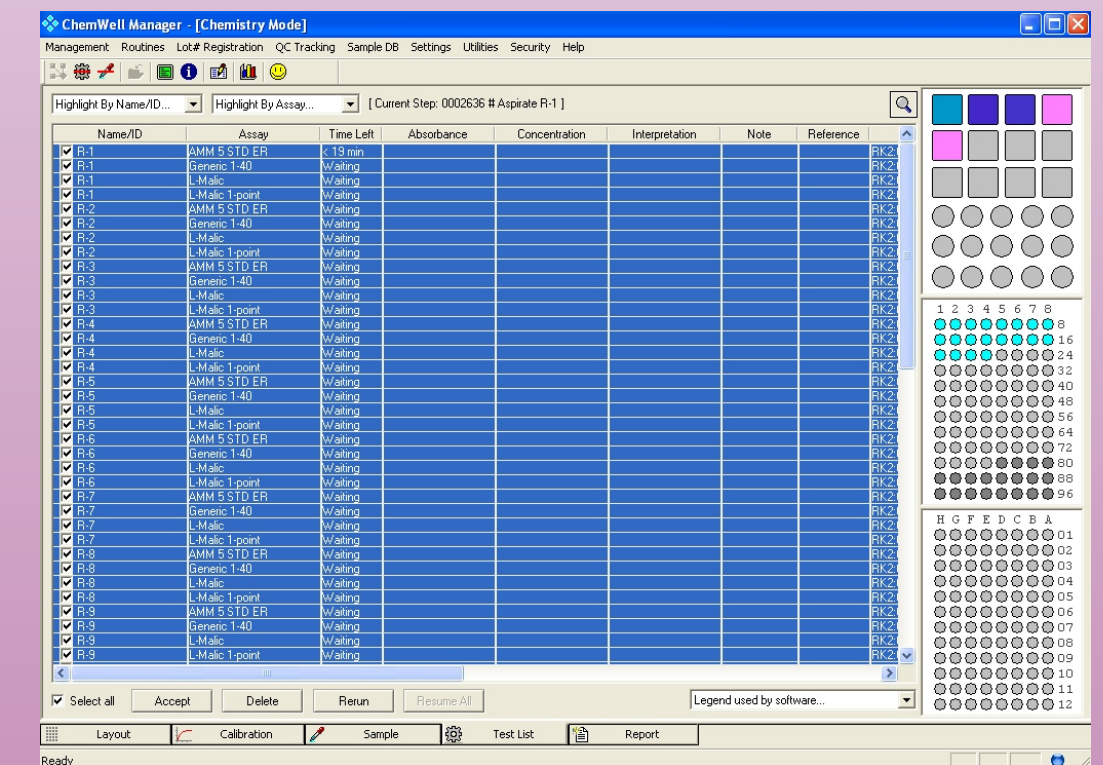


ChemWell® is versatile.

Set up a full or partial plate of assays and program Chem Well® to automatically make dilutions, dispense reagents, incubate, read, and prepare final reports. You can program ChemWell® as either a batch analyzer or a continuous loading random-access analyzer for performing clinical biochemistry tests.

ChemWell® is economical.

ChemWell® uses standard off-the shelf microwells for all reactions. Uncoated microwells make low volume sample cups for biochemistry. They can also be washed for re-use. Performing biochemistry assays in microwells offers many advantages including increased throughput and decreased cost per test.



Simply load reagents, samples, and micro-wells. Then, select the assays and reports you want to see.

**THE REST IS AUTOMATIC**

# ChemWell® 2902

Automated Biochemistry for the modern laboratory



ChemWell® is designed and manufactured by Awareness Technology, Inc.  
 PO Box 1679 Palm City, FL 34991 USA tel 772-283-6540 fax 772-283-8020  
 email: info@awaretech.com website: http://www.awaretech.com  
 ChemWell is supplied only by qualified, factory-trained distributors.