



## Océ TDS700

# Fits the way you want it



### Productive, flexible wide format system

#### Océ Printer Technology

##### Printing technology

Electrophotography (LED) with organic photoconductor drum

##### Resolution

600dpi × 1200dpi pico printing

##### Print optimisation

User specified print optimisation modes:

- Lines & text for excellent line accuracy
- Standard for excellent grays and smooth solid fills
- Poster for excellent grays and smooth solid fills

##### Fusing technology

Océ Radiant Fusing; instant heating

##### Toner system

Clean closed toner system.  
Refill toner while printing

#### Throughput

##### Speed

Constant 6 linear m/min

Warm-up time

None, Instant behaviour

##### Paper path

Optimised, continuous printing speed when printing jobs from different rolls, 1 knife per drawer.

##### Print productivity

- 4.7 Ao portrait /min, 8.5 D-ARCH portrait/min, 9.1 D-ANSI portrait/min for regular media
- 3.6 m/min for heavy media

##### Document delivery

Standard integrated receiving tray (IRT) for 100 prints (Ao) without interfering with access to toner and media



## Media

### Media sources

Choice from 16 configurations:

- 2 to 6 rolls and/or
- 1 to 3 sheet feeders and
- manual sheet feed section

### Media capacity

Up to 200 meters per roll (70gr/m<sup>2</sup> paper) with automatic switching when roll is empty.

### Media width

Roll width 297 mm – 914 mm

### Media types

Plain, transparent, recycled, fluorescent and coloured papers; films and vellums

### Output sizes

DIN and ANSI formats from A4 to Ao or A-size to E-size, up to 15 meters long

## Environment

### Dimensions

Width: 1440 mm

Depth: 800 mm

Height: 1475 mm

### Weight

Printer 2 roll configuration: 290 kg

- 28 kg for additional roll drawer (2rolls)

- 19 kg for additional sheet feeder

Printer 6 roll 1 sheet feeder: 365 kg

### Main supply

120/200/230 V; 50/60 Hz

### Power consumption

Sleep mode: 65 W (6,3 W)

printer + controller (printer)

Stand-by mode: 90 W (32,4 W)

Operational: 1,52 kW (1,46 kW)

### Sound pressure

Stand-by mode: 18 dB(A)

Operational: 58 dB(A)

According to EN 7779 operator position

### Dust emission

6 mgr/hr at continuous operation

### Ozone emission

0.3 mgr/hr at continuous operation

Safety approvals

TüV GS, CETECOM, CE, UL, (c)UL,

CB, FCC Class B

### Other approvals

EPA-ENERGY STAR



## Océ TDS700 Flexible Scanner

### Scanning technology

Océ patented Direct Scan colour technology, illuminating the original for accurate colours over long periods of time. (Innovative light source), eliminating risk of distortion (single mirror) and sharpness (single high-resolution reduction type camera).

- Océ Image Logic® real-time image processing

- 1 × Reduction type CCD camera

### Resolution

575 dpi (optical), up to 600 dpi interpolated

### Copy and scan modes

Lines & Text, Photo, Greys & Lines, Dark B&W and Grey (standard)

Original, Blueprint, Transparent

### Scan modes (option)

Colour

### Scanner user interface

- Intuitive and multilanguage

### Scanner templates (option)

- 5 user defined scanner templates for copying

- 5 user defined scanner templates for scan to-file.

In other words: more complex jobs can be performed at the touch of a single button

### Camera

Single 3 colour linear CCD, 21360 pixels per colour line, 24 bits colour

### Scanner panel

Can be positioned as needed

## Throughput

### Scan/copy speed (standard)

B&W 3 m/min. or 2 inch/sec.

Greyscale & Colour (option) 1 m/min.

or 0.7 inch/sec. constant in all scanning modes

### Scan/copy speed (option)

Black & White

Up to 5 m/min. or 3.3 inch/sec.

Greyscale & Colour

Up to 4 m/min. or 2.8 inch/sec.

### Warm-up time

None, instant behaviour even for colour scanning

### Output reception

Automatic rewinding

Integrated Delivery Tray (no extra footprint)

### Copying behaviour

No user intervention with automatic width detection and roll selection

### Size recognition

Accurate digital automatic width detection, indication on scanner panel of the exact measured width.

### Concurrency

Continuous feeding of copy jobs and scan jobs during printing of copy and print jobs. Pre programming of next job.

## Original

### Scan width

914.4 mm

### Original feed

- Face down
- Right aligned
- Automatic feed off/on

### Original size

Minimum 210 mm × 210 mm (L × W)

Maximum 6000 mm × 1016 mm (L × W).

Maximum thickness Up to 3 mm

---

## Imaging

### Image processing

Océ's patented Image Logic® Technology in 4 steps converting RGB data into 256 grey scales, removing unwanted background, sharpening text, enhancing weak information and ensuring smooth gradients.

### Exposure control

Automatic, manual fine adjustment, background compensation (on/off)

### Reproduction scale

Custom zoom 10–1000%, adjustable 0.1% steps.

Auto zoom to standard paper format

### Scan accuracy 1:1 Inaccuracy for A0 original

0.1% ± 1 pixel

Below 0.3%

### Image editing

Image shift, align, mirror, crop, delete area

### Copy stamping (option)

Stamp content: free text, date, time

Number: up to 50 user defined stamps

Selection: from comprehensive list on scanner panel

### Colour space (scan to file option)

Accurate sRGB

## Copy Functions

### Multi-copy mode

1 – 999 copies

### Input modes

- Single sheet
- Set collated or not
- Not collated

### Set memory

Up to 999 copies from a set of at least 2400 Ao originals

### Output roll selection

Manual or automatic selection with user defined user defined criteria

### Output edges definition

Leading and trailing edge adjustments. Standard cut and synchro cut modes.

---

## Scan Functions (Option)

### Scan technology

Océ Colour Image Logic® intelligent image processing for B&W, greys and full colour with up to 6 special modes for the “right the first time” results

### Resolution

Selectable from 72 up to 600 dpi

### Data format

TIFF (uncompressed, Packbits, G3, G4 and LZW)

PDF (uncompressed, Flat LZW and G4)

CALS

JPG

### Scan modes

Single scan, stream feed productive batch scanning with or without check plot

### Speed in B&W mode

Maximum 5 m/min at resolution up to 200 dpi

### Speed in greys and colour mode

Maximum 4 m/min at resolution up to 150 dpi

## Environment

### Dimensions

- Width: 1,300 mm
- Depth: 650 mm
- Height: 1,300 mm

### Weight

70 kg

### Main supply

100–230 V, 50–60 Hz

### Power consumption

- Sleep mode: 5 W
- Standby: 20 W
- In operation: 105 W

### Sound pressure

- Sleep mode: < 23 dB(A)
- Stand-by mode: 23 dB(A)
- Operational: 50 dB(A)

According to EN 7779 operator position

### Safety approvals

TüV GS, CE, UL, (c)UL, CB, EMC

Directive 89/336/EEC, FCC

### Other approvals

EPA-ENERGY STAR



---

## Océ TDS700 Productive Scanner

### Scanning technology

Océ Image Logic® real-time image processing hardware 1 reduction type  
CCD camera

### Scan resolution

- Scan resolution is 200 × 400 dpi (400 dpi in transport direction) in grey scale domain
- Image Logic® converts the 200 dpi (CCD resolution) into 400dpi

### Copy and scan modes

- Lines & Text,
- B&W and Grey
- Photo,
- Greys & lines,
- Dark Original,
- Blueprint,
- Printed matter

### Scanner user interface

Intuitive and multilanguage

### Scanner templates (option)

4 user defined templates for copy or scan-to-file

### Camera

Single reduction type CCD camera

### Scanner panel

Easy readable, slightly tilted, back lit scanner panel

## Throughput

### Scan speed (standard)

5 m/min or approximately 4 Aos/min  
independent of original mode

### Warm up time

None, the scanner has an instant start up behaviour

### Output reception

Automatic rewinding or  
Original delivery tray (option)

### Copying behaviour

Automatic, no user intervention with automatic width detection and roll selection

### Size recognition

Automatic width detection with build in sensor

### Concurrency

Continuous feeding of copy jobs and scan jobs during printing of copy jobs and print jobs. Pre-programming of next job

## Original

### Original feed

- Face down, right aligned
- Automatic feed off/on
- Rewind original to front off/on

### Originals

- Automatic original size detection
- Image width: 210 – 914 mm
- Original width: 210 – 1020 mm
- Original length: 150 mm – 15 m

### Maximum thickness

1 mm of original and up to 3 mm for binding strip

## Imaging

### Image processing

Océ patented Image Logic® Technology in 4 steps, converting data in 256 grey scales, removing unwanted background, sharpening text, enhancing weak information and ensuring smooth gradients.

### Exposure control

Automatic, Manual fine adjustment, Background compensation on/off

### Reproduction scale

- Scale: 25% – 400% (adjustable in 1% and 0.1% steps)
- Programmable fixed steps
- Auto scale to paper size
- Scale table with pre-defined media size conversions

## Scan accuracy

0.1 %

### 1:1 inaccuracy for A0 original

Below 0.3%

### Image editing

- Image align: Horizontal left, middle, right
- Image align: Vertical top, centre, bottom
- Image shift: horizontal/vertical
- Image mirroring

### Copy stamping

Stamp content: free text, date, time  
Number: up to 50 user defined stamps  
Selection: from comprehensive list on scanner panel

## Copy Functions

### Multi copy mode

1–999 copies

### Input modes

Single sheet,  
Set collated or not,  
Matrix copy (option)

### Set memory

Up to 999 copies from a set or up to 2,400 Ao originals

### Auto zoom

Copy sets with different original sizes to a predefined size without the need to adjust the zoom factor after each original

### Output roll

Automatic roll selection, manual, user defined

### Output edges

Leading and trailing edge adjustments.  
Standard cut and syncho cut modes

## Scan Functions (option)

### Scan technology

Océ Image Logic® intelligent image processing for B&W, greys with up to 6 special modes for the “right the first time” results

### Resolution

Selectable from 75 up to 400 dpi

### Data format

TIFF (uncompressed, Packbits, G3, G4 and LZW)

PDF (uncompressed, Flat LZW and G4)

CALS

### Scan modes

Single scan, stream feed productive batch scanning with or without check plot  
Speed in B&W and Grey mode  
5 m/min at resolution up to 400 dpi

## Environment

### Dimensions

- Width: 1,314 mm
- Depth: 583 mm
- Height: 1,353 mm

### Weight

90 kg

### Main supply

100–230 V, 50/60 Hz

### Power consumption

Standby: 97 W

In operation: 101 W

### Sound pressure

Standby: 19 dB(A)

In operation: 57 dB(A)

According to EN 7779 Operator position

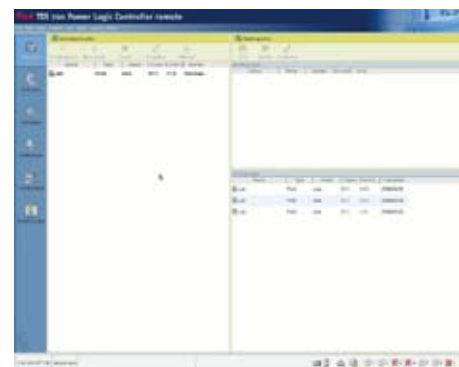
### Safety approvals

TüV GS, CETECOM, CE, UL, (c)UL, CB, FCC

### Other approvals

EPA–ENERGY STAR

## Océ Power Logic® Controller for the Océ TDS700



### Platform

Océ controller with Windows® XP embedded

### Concurrency

- Print and scan simultaneously
- Print and copy simultaneously
- Scan and copy simultaneously
- Process next jobs during printing
- simultaneously

### Hard disc capacity

80 Gb. Two high speed hard discs, one dedicated to file spooling and one for set memory

- Up to 999 copies of set of up to 2,400 Ao
- Send once, process once, print many

### Memory

512 Mb, expandable to 2048 Mb for Océ TDS700 Printer

512 Mb, expandable to 2048 Mb for Océ TDS700 hybrid productive

1024 Mb, expandable to 2048 Mb for Océ TDS700 flexible

### Graphical user interface

Océ TDS700 Power Logic® Controller Remote (standard)

Cabinet, keyboard, mouse and monitor (option)

### Standard interface

10/100BaseT with RJ45

### Network protocols

TCP/IP, SMB (for scan-to-file only), IPX/SPX, FTP, LPD

### Functions

- Multiple prints: up to 999
- Automatic file format sensing
- Automatic roll selection and switching
- Plot manipulation; auto-positioning, rotation, auto-scaling
- Pen management
- Auto rotate production mode for faster printing

### Language sensing

Automatic Language Sensing (ALS)

File formats (standard)

- Vector: HPGL, HPGL/2, Calcomp
- Raster: HP-RTL, TIFF 6.0, CALS-I, NIRS, C4, ASCII, JPEG

### File formats (option)

Adobe® PostScript 3™ PDF printing

### Power consumption

Controller: < 100 W

### Electrical requirements

100–120 / 230 V, 50/60 Hz

### Applicable software

Océ Power Logic® Controller software

## Océ TDS700 Power Logic® Controller Remote

### Basic applications

- Océ Power Logic® controller application, one integrated application for print job management, scan job management, system status management, scanner templates, system preferences and network configuration

### System status

- Controller memory and processor
- Printer
- Scanner
- Media availability: size and type

### System access

Password protected access levels with different rights to perform tasks or change system settings.

- Anonymous

- Repro Operator
- Key Operator
- System Administrator
- Océ Service

## Print Jobs (Advanced Queue Management)

### Print Job Management

Control your document workflow with one queue for print and copy jobs. Three views available to guarantee full control: scheduled jobs, waiting jobs and printed jobs.

### Scheduled jobs

- Print Interrupt
- Move to top
- Move to waiting room

### Waiting jobs

- Print job, delete job

### Printed jobs

- Print job, delete job, and change properties of the job.

## Scan jobs (option)

### Applications



Océ Scan Logic® option activates this window on the controller of the Océ TDS700 multifunction system. Océ Scan Manager is the integrated scanning solution of the Océ TDS700.

### Scan destinations

- 10 programmable destinations directly selectable from scanner panel
- Scan to Web using FTP
- Scan to network directory
- Scan to controller

### File naming

Automatically generates unique file names for each scan. Change file name at point of scanning (TFT screen, keyboard and mouse is required)

### View

View scans at point of scanning. Make use of streaming technology particular productive for viewing scanned documents

(TFT screen, keyboard and mouse is required)

## Scanner Templates (Option) Application

Right scanner settings available after one keystroke. Customer defines the scanner templates for copy or scan to file. Title of templates is defined by customer to improve usability

### Available templates

Flexible scanner: 5 for copying and 5 for scanning

Productive scanner: 4 scanner templates

### Templates library

Store 45 scanner templates, description of stored settings can be read on scanner panel.

## System Preferences

### Application

This application allows you to customise, change and save the system parameters to tune the system to the users document workflow. These parameters determine the default behaviour of the print and scan systems.

### Accessibility

Only the user proper security rights can change and store the system settings

### Store system settings

Unlimited number of system settings can be stored

### Functions

- Pen settings
- Printer language settings 19 languages
- General administrator settings

## Network Configuration

### Application

- Customise, change and save the parameters of the Océ TDS700 related to the network and IT infrastructure

### Functions

- Host information
- Network settings
- System Set Up
- Advanced Security Settings



## Océ High Speed Logic® (Océ TDS700 flexible scanner only)

Océ High Speed Logic is an optional enabling faster input speeds

### Speed in B&W mode

Maximum 5 meters per min. at resolution up to 200 dpi

### Speed in greys and colour

Maximum 4 meters per min. at resolution up to 150 dpi

## Océ Colour Logic® (Océ TDS700 flexible scanner only)

Océ Colour Logic® is an optional enabling, in combination with the Scan Logic option, to scan-to-file in colour

### Colour space

Accurate sRGB

## Océ Matrix Logic® (Océ TDS700 productive scanner only)

Océ Matrix Logic® makes it possible to copy a set once and print it out in different formats, for different user groups to support the document distribution rules within a company.

### Functions

- Banner page
- Set up different distribution groups (i.e. store and select predefined print settings)
- Define different binding/finishing per set

## Océ Print Exec® Workgroup (option)

Océ Print Exec® Workgroup is a powerful, smart and efficient web-based software application for printing sets in workgroup environments

### Functions

- Back-channel printer status information
- Stamping
- Set up different print configurations (i.e. store and select predefined print settings)
- Banner page
- Pre-viewing plot files
- Save and recall print jobs
- Reprint Jobs

## Océ Account Center (option)

Océ Account Center is a software application that enforces the users to enter valid accounting information before printing, copying and scanning to the Océ TDS700. Cost can then be allocated to the appropriate users, departments and projects.

### Functions

- Printer and scanner lock out
- Define number of accounting fields
- Customised account fields
- Pin Code functionality
- Alpha-numeric account input
- Customised filters
- Basic reports to be viewed in Excel
- Open interface to integrate Océ Account Center with third party accounting software solution

## Drivers and job-submission software

### Océ HDI driver

For AutoCAD (LT) 2000, 2000i, 2002, 2004, 2005 and 2006

### Océ Windows driver

- Windows 2000, XP, Windows Server 2003, Windows Terminal Server, Citrix Metaframe

- Optimised for AutoCAD

- Microsoft signature

Océ Adobe® PostScript® drivers

Windows 2000, XP, Windows Server 3 2003 and Mac OS9 and OSX

### Océ Print Exec® Workgroup Basic (standard)

Web-based software applications for easy printing of collated sets of up to 10 documents. Includes online viewing of printer status and scheduled prints and waiting room

## Copy delivery tray (option)

### Model

Wheeled delivery tray with blower unit

### Capacity

Up to 150 sheets (media type dependent) from A3 to Ao/E+

### Power consumption

<40 W

### Mains supply

120/230V, 50/60 Hz

## Dimensions

- Width: 1,170mm
  - Depth: 1,090 mm with tray fully extended
  - Height: 1,440 mm
- ### Weight
- 35.5 kg

## Océ Online Folder (option)

Océ TDS700 online folder is a fully integrated with the hybrid system. The user selects the right folding method, binding method and delivery method on the scanner panel for copying and in the drivers or job submission tool for printing. The default folding method can be set via Océ TDS700 Power Logic® Controller Remote.

### Folding methods

DIN, Ericson, AFNOR-like

Fanfold, fanfold and cross fold

Length folding package:

276 mm – 310 mm

Width folding package:

186 mm – 230 mm

### Binding methods

Binding edge: 0, 15 mm – 20 mm

Reinforcement unit (option): Glue perforated plastic strips to folded package for opening folded document without taking it out of a binder

### Media material

Plain paper

### Media size

- Width: 279 mm – 914 mm
- Length: 210 mm up to 2500 mm (cross fold and fanfold),
- up to 6000 mm (fanfold only)

### Delivery methods

Integrated bins for fanfold and cross fold

- Stacker: 22 folded Ao
- Delivery belt unit (option):  
± 75 folded Ao

### Mains supply

120/230V, 50/60 Hz

### Power consumption

Below 100 W operating

### Weight

220 kg

---

## Océ Double Decker (option)

The Océ Double Decker is a high volume stacker with two bins for an efficient delivery of unfolded prints. Each bin has a capacity of 750 sheets (Engineering bond 20 lbs. or Plain Paper 75g/m<sup>2</sup>).

### Number of trays

2

### Total capacity

1,500 sheets Plain Paper 75 g/m<sup>2</sup>

Capacity per tray

750 sheets Plain Paper 75 g/m<sup>2</sup>

### Tray selection

- Manual switch
- Upper tray: sheets are delivered to upper tray
- Lower tray: sheets are delivered to lower tray
- Automatic: if tray is full, sheets go to the other tray ("tray full" by audio signal)

### Delivery method

Face up

### Stacking accuracy

High accuracy by use of magnetic alignment guides (eight included with Océ Double Decker)

### Supported media

Same media as for printers (except for film)

### Supported media sizes

A4, A3, A2, A1 and Ao E+,

maximum stacking length 1,200 mm

## Océ Wide Format Printing Systems Partners and Awards



2006 ■



2007 ■



YES TESTED & APPROVED

Novell



CITRIX



**Printing for  
Professionals**

For information and services, visit us at [www.oce.com](http://www.oce.com)

© 2007 Océ. Illustrations and specifications do not necessarily apply to products and services offered in each local market.

Technical specifications are subject to change without prior notice. All other trademarks are the property of their respective owners.