

ANT Series

Innovative, High quality, Best price



ANT-HP5535N

Dual Polarity High Performance Dish
4.8 - 6.1 GHz, 35 dBi

Features:

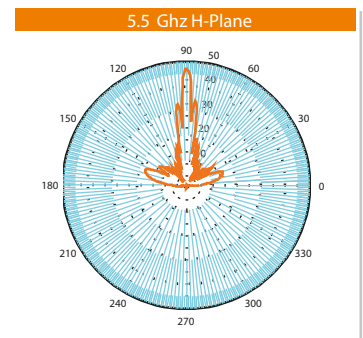
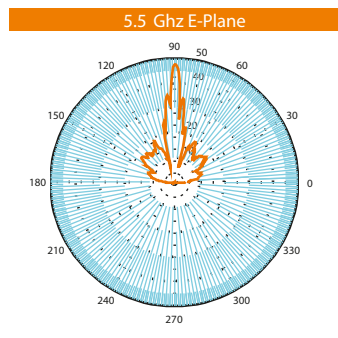
- Wide Band Operation
- Vertically and Horizontally Polarized
- Best Solution for **Ultra long range** links

Electrical Specification

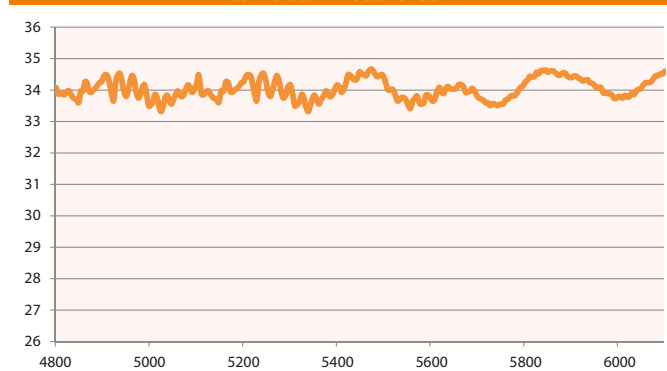
Frequency Range:	4800 -6100 MHz
Gain:	35 dBi
3dB Beamwidth:	3 ° (typ)
VSWR:	1.4:1 (typ)
Impedance:	50 Ohms
Input Power:	25 W
Connector:	2 x N-Female
Sidelobes:	2 dBi (max)
Front to Back Ratio:	48 dB
Cross Polarization:	31 dB (max), 35 (typ)
Port to Port Isolation:	32 dB (max), 45 (typ)

Mechanical Specification

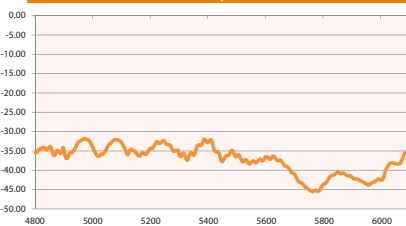
Size/Diameter:	1060 mm
Weight(incl. bracket):	14.5 Kg
Wind Loading(Operating):	130 Km/h
Wind Loading(Survival):	200 Km/h
Operating Temperature:	-50°C to 70°C
Mounting Kit/Style:	Included/Pole Mount
Pole Diameter:	25-60 mm
Additional Features:	Accurate Pan & Tilt alignment



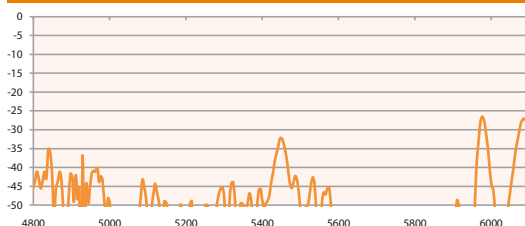
Antenna Gain 4800 -6100 MHz



Antenna Cross Polarity 4800 -6100 MHz



Antenna Port to Port Isolation 4800 -6100 MHz



Antenna VSWR 4800 -6100 MHz

