



Type YAF-14S, 14F Ball Float Type Steam Trap

3

This is a lever float type steam trap that can be used where pressure is high and where a large volume of condensate is generated, such as heat exchangers, room heating and water heating facilities, and air-conditioning and heating facilities.



Type YAF-14S



Type YAF-14F

■ Features

- Outstanding performance in continuous discharge, regardless of load fluctuations of condensate.
- Built-in automatic Air Vent ensuring no air binding.
- Easy repair and inspections : simply remove the cover for repair and inspections. The float assembly is attached to the cover.

■ Specifications

Type	YAF-14S	YAF-14F
Size	15, 20, 25, 32, 40, 50A	
Applicable pressure	4.5, 10, 14kgf/cm ² g	
Applicable temperature	220° C below	
End connection	KS PT SCREW	KS 10K RF FLANGE
Materials	Body	GCD450
	Seat	STS
	Float, lever	STS
	Air vent	Bimetals
Hydraulic test pressure	1.5 times of applicable flange rating	

■ Maximum applicable differential pressure

Type	Differential pressure (kgf/cm ²)
YAF-14(4.5)	4.5
YAF-14(10)	10
YAF-14(14)	14

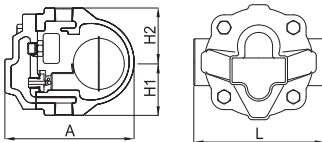
■ Dimensions

(mm)

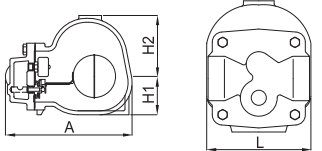
Size	L	H1	H2	A	Weight(kg)
15(1/2")	122 (170)	61	61	147	2.9
20(3/4")	122 (170)	61	61	147	2.9
25(1")	122 (200)	67.5	108	223	6.8
32(1 1/4")	160 (210)	67.5	108	238	7.2
40(1 1/2")	270 (270)	80.5	125.5	285	17.5
50(2")	300 (300)	90	142	295	22.0

▶ The dimensions in parenthesis are for YAF-14F.

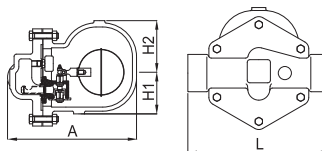
■ Dimensional drawing



15, 20A



25, 32A



40, 50A

■ Size selection chart

