

E215 EVOLUTION



PRELIMINARY

Net flywheel power **112KW – 152 HP**

Maximum operating weight **23310 kg**

Bucket capacity **from 0.52 to 1.31 m³**



EVOLVING TECHNOLOGY

E215 EVOLUTION

- ***Evolution in technology***
- ***Evolution in productivity and low fuel consumption***
- ***Evolution in comfort and safety***
- ***Evolution in easy serviceability and maintenance***
- ***Evolution in hydraulic system versatility and predisposition***



EVOLVING TECHNOLOGY



Specifications



Engine Tier-2

Net flywheel power (ISO 14396)152 HP/112kW
 Governed rpm2150
 Make and modelIVECO F4ED684B
 Typediesel 4-stroke, direct injection, turbocharged and intercooler
 Displacement5,9 l
 Number of cylinders6
 Bore x stroke102 x 120 mm
 Maximum torque at 1400 rpm660 Nm

Remote engine oil filter for easy replacement

Electronic engine rpm control, dial type

Auto-idling selector returns engine to minimum rpm when all controls are in neutral position

-20° outside temperature start as standard equipment (-25° optional)

The engine complies with ECE Standard 97/68 STAGE 2 and USA CARB EPA TIER 2 specifications



Electrical system

Voltage24 V
 Alternator70 A
 Starter motor4 kW
 Standard maintenance-free batteries2
 Capacity100 Ah



Hydraulic system

New S.H.S (Smart Hydraulic System) for perfect controllability and simultaneity of all movements

New generation **A.I. (Artificial Intelligence)** on-board computer

APS (Automatic Priority System) device

Computerized pumps delivery and main control valve actuation in relation to manipulators stroke and working pressure demand

ESSC (Engine Speed Sensing Control device) for total installed hydraulic power exploitation

High definition E.T.S (EASY TO USE) multi-function monitor incorporating:

- Maintenance programme
- Self Diagnosis System
- Operating Data Storage (engine rpm/operating pressure and the like)

M.W.S Mechatronic Work Selector:

- **Standard Mode (W)** - Standard operating mode
- **Heavy/Mechatronic Mode (H/M)** - Maximum hydraulic power for top productivity. In this mode, the unit **"learns"** the type of operation being completed after 2 cycles and automatically selects maximum efficiency/speed and operating precision with the **A.P.S. (Automatic Priority System)** device
- **Attachments Mode (A)** - Possibility of selecting and storing delivery for supplementary tooling from the operator compartment

Continuous untimed insertion **Power Boost Device**. Continuous insertion of the device when selected ensures maximum diggability and productivity in the toughest applications.

Standard double pumps flow device

Pipe pressure discharge push button to facilitate tooling changeover without piping oil leakage.

Two-directional crusher/hammer system

Main pumps:

Two variable delivery pumps with electronic delivery adjustment.
 Pumps automatically revert to zero delivery with controls in neutral.
 Maximum delivery2 x 210 l/min
 Piloting circuit gear type pump
 Maximum delivery22 l/min

Maximum operating pressure:

Equipment/swing/travel34.3 MPa
 Power boost37.8 Mpa
 Hydraulic cylindersdouble effect
 - Lift (2) - bore x stroke125 x 1240 mm
 - Penetration (1) - bore x stroke135 x 1490 mm
 - Bucket (1) - bore x stroke120 x 1080 mm
 - Positioning (only triple articulation)
 bore x stroke150 x 1090 mm
 Independent hammer/positioning control



Transmission

Typehydrostatic, two-speed
 Travel motors2, axial pistons type, double displacement
 Brakesautomatic discs type
 Final driveoil bath, planetary reduction
 Gradeability (continuous)70% (35%)
 Travel speeds:

 lowfrom 0 to 3.6 km/h
 highfrom 0 to 6.0 km/h

Automatic Down Shift device: to move travel motors to maximum displacement position with selector on "speed" position when greater traction is required.



Swing

Swing motoraxial piston type
 Swing brakeautomatic discs type
 Final driveoil bath, planetary reduction
 Swing ringoil bath type
 Swing speed12.7 rpm



Cab and controls

Cab in compliance with TOPS (Tilt Over Protection Structure) standard.
 Transparent upper cab roof.

Standard automatic conditioning.

Controlspiloted
 Two cross path pattern levers actuate all equipment movements and superstructure swing.

Two pedals with detachable hand levers control all track movements, counter-rotation included.

A safety lever completely neutralizes the piloting circuit



Undercarriage

X-frame undercarriage design
 Reinforced track chain with sealed bushings.

	E215	E215E	E215LC
Track rollers (each side)	7	7	8
Carrier rollers (each side)	2	2	2
Length of track on ground (mm)	3373	3373	3656
Gauge (mm)	2200	1990	2390
Shoes (mm)	600-700 800-900	500-600 700	600-700 800-900

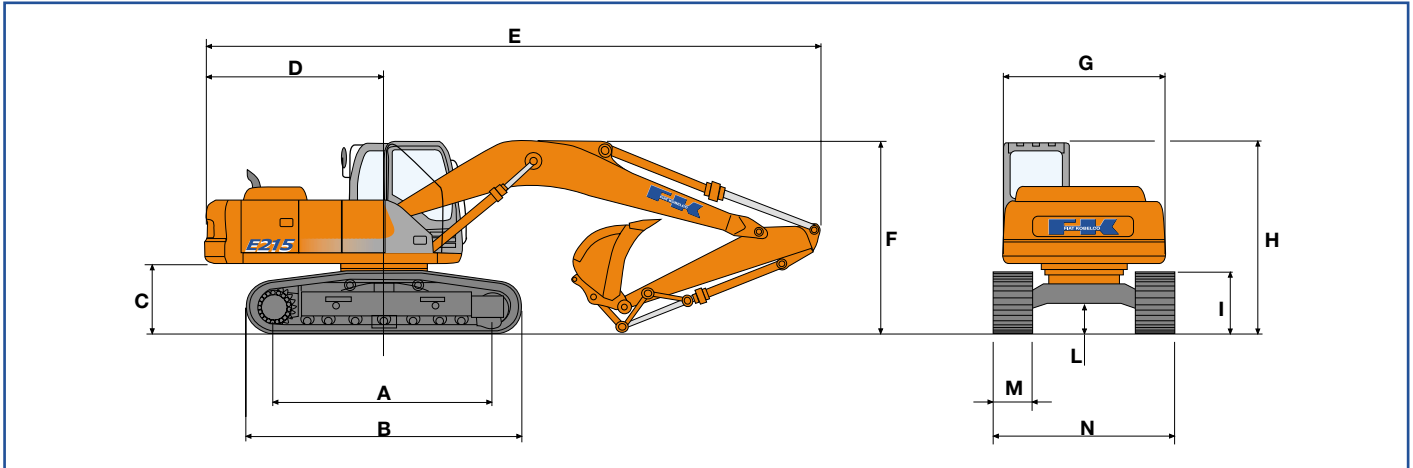


Capacities

Engine litres
 Lube oil17.0
 Coolant24.0
 Fuel tank292.0
 Hydraulic reservoir270.0

One-piece boom

Dimensions (mm) - Operating weight

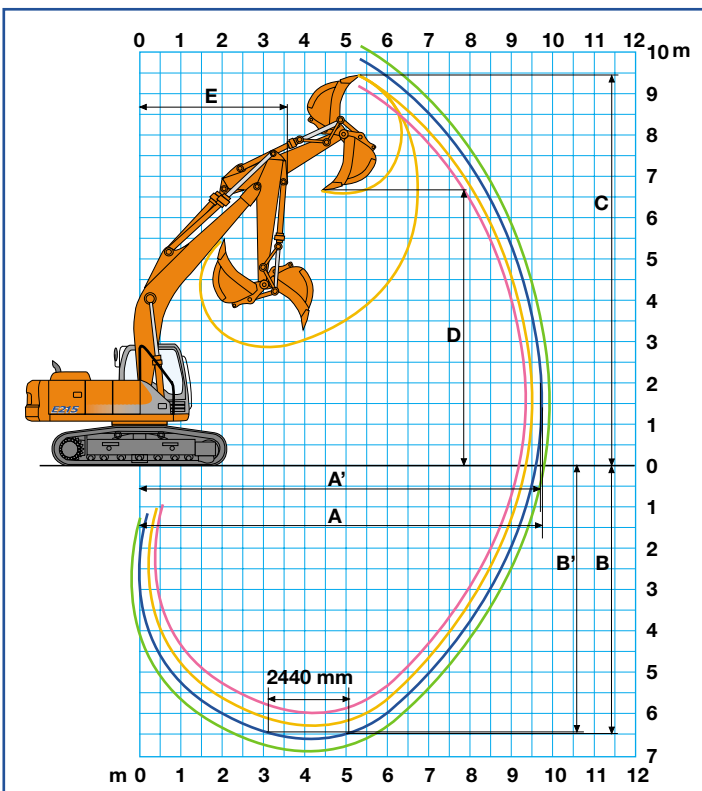


Versions	A	B	C	D	E	F	G	H	I	L
E215	3373	4197	1062	2750	(1) 9490	(1) 2970	2490	2970	952	468
E215E	3373	4197	1076	2750	(1) 9490	(1) 2980	2490	2984	952	482
E215LC	3656	4480	1067	2750	(1) 9490	(1) 2970	2490	2975	952	473

(1) 2400 mm dipper stick

		E215				E215E				E215LC			
M – Shoe width	mm	600	700	800	900	500	600	700	600	700	800	900	
N – maximum width	mm	2800	2900	3000	3100	2490	2590	2690	2990	3090	3190	3290	
Operating weight	kg	21500	21750	22000	22250	20800	21050	21300	21950	22220	22490	22760	
Ground pressure	bar	0.54	0.47	0.42	0.37	0.63	0.53	0.46	0.51	0.44	0.39	0.35	

Digging performance



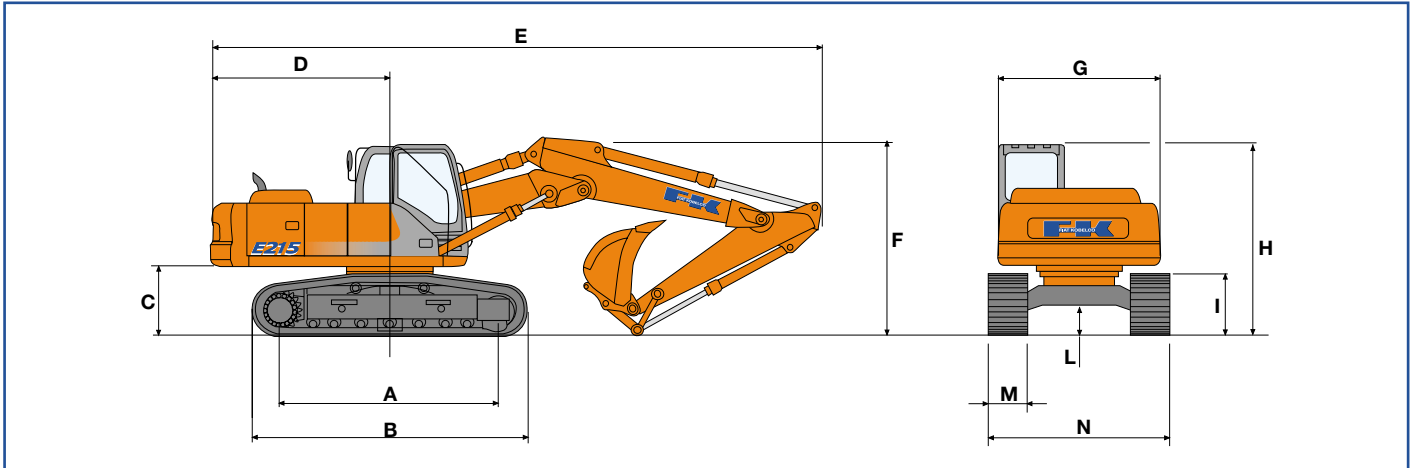
Dipper stick	mm	2080	2400	2900	3500
A	mm	9133	9445	9926	10320
A'	mm	8952	9270	9765	10165
B	mm	5821	6141	6681	7241
B'	mm	5592	5938	6505	7062
C	mm	9235	9450	9670	9579
D	mm	6488	6661	6908	6935
E	mm	3630	3555	3625	3553

Breakout force:					
Bucket	daN	14600	14600	14600	14600
Dipper stick	daN	14300	12400	10300	8500

With:					
Power Boost on:					
Bucket	daN	16000	16000	16000	16000
Dipper stick	daN	15650	13500	11200	9300

Triple articulation

Dimensions (mm) - Operating weight

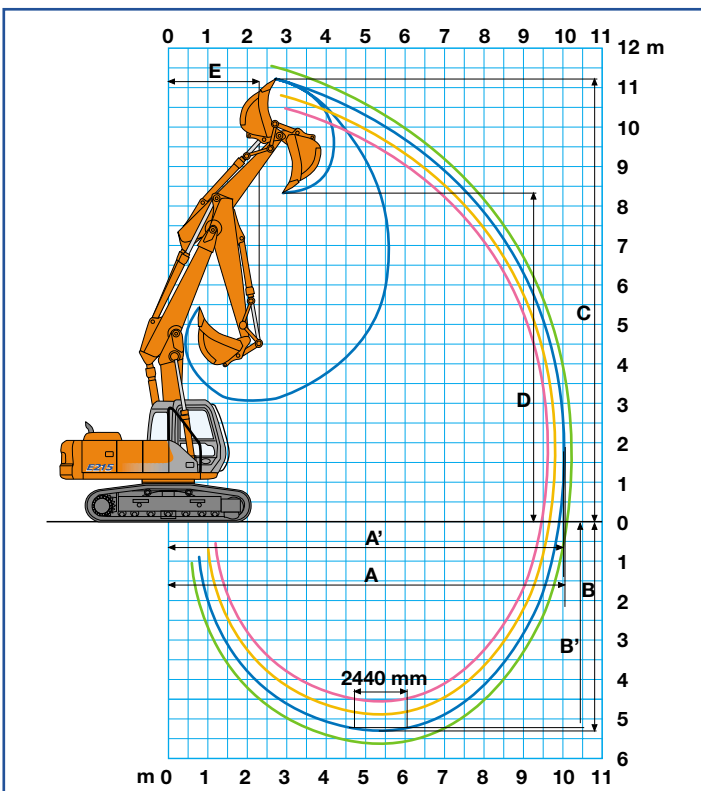


Versions	A	B	C	D	E	F	G	H	I	L
E215	3373	4197	1062	2750	(1) 9520	(1) 3100	2490	2970	952	468
E215E	3373	4197	1076	2720	(1) 9520	(1) 3100	2490	2984	952	482
E215LC	3656	4480	1067	2750	(1) 9520	(1) 3100	2490	2975	952	473

(1) 2400 mm dipper stick

		E215				E215E				E215LC			
M – Shoe width	mm	600	700	800	900	500	600	700	600	700	800	900	
N – maximum width	mm	2800	2900	3000	3100	2490	2590	2690	2990	3090	3190	3290	
Operating weight	kg	22100	22350	22600	22850	21750	22000	22250	22500	22770	23040	23310	
Ground pressure	bar	0.56	0.48	0.43	0.38	0.66	0.55	0.48	0.52	0.45	0.40	0.36	

Digging performance



Dipper stick	mm	2080	2400	2900	3500
A		9210	9530	10030	10444
A'		9033	9357	9866	10291
B		5454	5777	6304	6801
B'		5335	5664	6199	6703
C		10539	10821	11235	11455
D		7612	7902	8311	8529
E		2649	2566	2361	2552

Breakout force:					
Bucket	daN	14600	14600	14600	14600
Dipper stick	daN	14300	12400	10300	8500

With:					
Power Boost on:					
Bucket	daN	16000	16000	16000	16000
Dipper stick	daN	15650	13500	11200	9300

Standard equipment

Auto-idling device
 Batteries, maintenance
 Cell phone holder with recharge socket
 Centralised boom lubrication
 Cyclone pre-filter
 Double pumps flow
 Engine rpm electronic control
 Foot pedal or lever travel control
 Front seal hydraulic piping and connections
 Fuel transfer electrical pump
 Grease bath swing ring
 HD chains
 Horn
 Hydraulically suspended cab with transparent opening roof and automatic air conditioning system
 Main control valve with antidrift valves

Multi-function electronic instrument panel (E.T.S.)
 M.W.S. (Mechatronic Mode Selector)
 One-piece boom or triple articulation
 Power Boost device
 Radio set
 Seat, heated mechanical suspended
 Shoes:
 Version E – 500 mm
 Standard version – 600 mm
 LC version – 600 mm
 S.H.S. (Smart Hydraulic System)
 Swing and travel motors with automatic disc type brakes
 Tier-2 emissioned diesel engine
 Tool kit
 Two-speed intermittent operation windshield wiper
 Two travel speeds with Automatic Down Shift device

Optional equipment

Antitheft device
 Air suspension heated operator seat
 Boom anti-drop valves on lift cylinders
 Boom anti-drop valves on dipper stick cylinder
 2080 mm dipper stick
 2400mm dipper stick
 2900mm dipper stick
 3500mm dipper stick
 Hammer/crusher predisposition
 Hammer piping on booms
 Load handling (including all anti-drop valves and hook)

Multi-purpose, rock and heavy duty buckets with boom/bucket adjustment device
 Northern country equipment
 Piping on booms for supplementary low delivery function
 Shoes:
 Version E - 600 - 700 mm
 STD and LC version - 600 - 700 - 800 – 900mm
 Supplementary cab lights
 Supplementary low delivery hydraulic function predisposition for grass cutter/grapple rotation bucket

Buckets

SAE Capacity	CECE heaped capacity	Width	Weight
0.52 m ³	0.45 m ³	750 mm	503 kg
0.62 m ³	0.53 m ³	850 mm	537 kg
0.78 m ³	0.66 m ³	1000 mm	634 kg
1.00 m ³	0.83 m ³	1200 mm	651 kg
1.10 m ³	0.91 m ³	1300 mm	698 kg
1.31 m ³	1.09 m ³	1500 mm	766 kg

At your own dealership

The information contained in this brochure is intended to be a general nature only. The FIAT KOBELCO company may at any time and from time to time, for technical or other necessary reasons, modify any of the details or specifications of the product described in this brochure. Illustrations do not necessarily show products in standard conditions. The dimensions, weights and capacities shown herein, as well as any conversion data used, are approximate only and are subject to variations within normal manufacturing techniques.

Published by FIAT KOBELCO CONSTRUCTION MACHINERY S.p.A. - <http://www.fiatkobelco.com>
LEADER Firenze - Printed in Italy - SatizMSX (Torino - Italia) - Cod. 60050 - INB Printed 02/03



EVOLVING TECHNOLOGY