

Putzmeister Concrete Pumps GmbH |
P.O. Box 2152 | 72629 Aichtal | Tel. +98
224 286 75-8 | Fax +98 224 228 78 | +98
0912 8 584 584
kormit.abedi@yahoo.com Right to
make amendments reserved | © by
Putzmeister | All rights reserved |
Printed in Germany | 1707
www.saghargostar-co.ir



Truck-mounted concrete pump with
renovation equipment 20-4 Sanima

20-4 Sanima: More equipment for greater flexibility

Putzmeister Concrete Pumps GmbH | P.O. Box 2152 | 72629 Aichtal | Tel. +98 224 286 75-8 | Fax +98 224 228 78 | +98 0912 8 584 584
 kormit.abedi@yahoo.com Right to make amendments reserved | © by Putzmeister | All rights reserved | Printed in Germany | 1707
 www.saghargostar-co.ir

20-4: Truck-mounted concrete pump and renovator in one

The Sanima kit turns your 20-4 truck mounted concrete pump into a renovation expert: Hoses, pipes, reduction pieces and accessories – in short, all require extras are included, neatly stowed away in cases and trays.

Thanks to its modular design, the 20-4 can be easily retrofitted with a Sanima kit.

20-4 Sanima – used wherever other pumps cannot reach

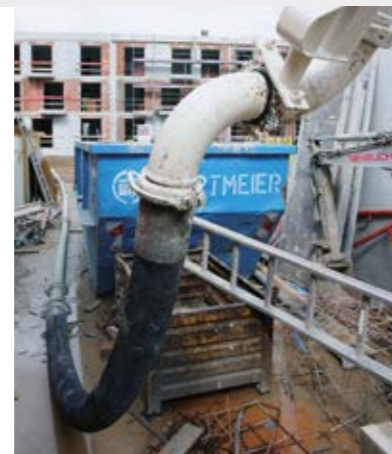
- Extremely nimble with its twin-axle chassis
- Space-efficient thanks to small support dimensions
- With its additional hose and pipe lines, the Sanima feels at home at construction sites without vehicle access and renovation work in town centres.
- Flexible 4-arm folding boom with an unfolding height of just 4 m

Sanima Kit

- Stowage boxes on either side underneath the flatbed for couplings and accessories (fig. 1)
- Brackets between jack and driver's cab (T-reduction pipe)
- Hose magazine, bolted to flatbed, for 21 hoses 4.5 m long DN 65 (fig. 2)
- Storage tray on hose magazine (fig. 3)
- Water box remote control on feeder container (fig. 4)
- Pipe cleaning head, collecting bin for DN 65 hoses, T-reduction pipe from DN 125 to DN 65

Further optional extras

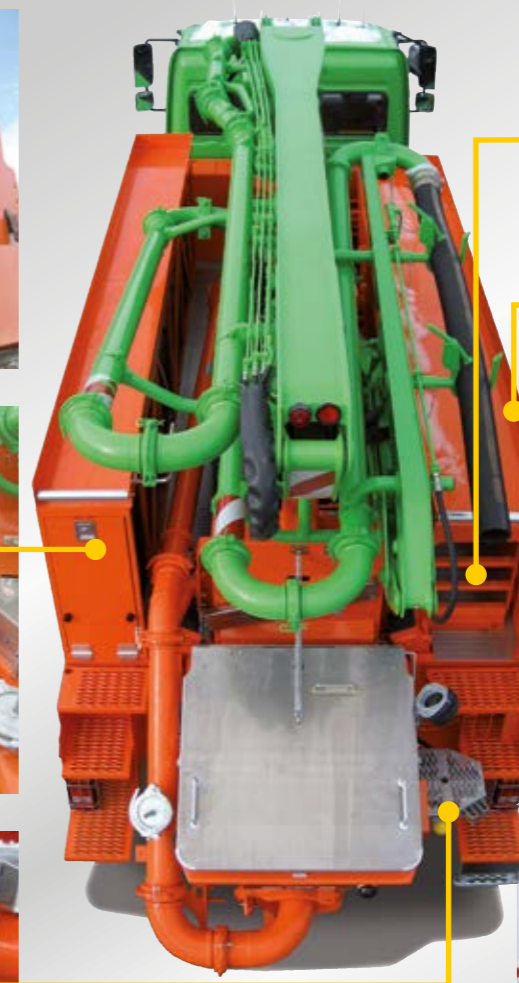
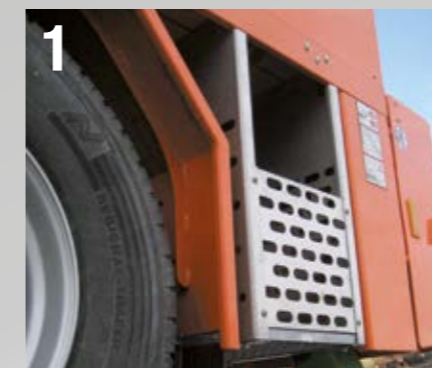
- Pipe mount on right flatbed for 8 or 12 pipes 3 m long DN 125 (fig. 5)
- Storage tray on right pipe mount (fig. 6)
- Removable hose magazine on left with container fasteners
- Loading function with cable winch for simple hose removal at convenient working height (fig. 7)



In closely-spaced housing developments, the 20-4 Sanima is a step ahead: With an extension line connected to one of the boom ends, concrete can be placed over distances that even the long 60 m booms can not span.



The 20-4 Sanima as pure hose pump: With the hinged elbow rotated by 180°, reduction couplings for DN 65 delivery hoses can be connected. Here, the 20-4 Sanima is used in restricted space to pump concrete into cellars through more than 80 m of delivery line.



Ergonic® Pump System EPS: The decisive advantage in renovation work

EPS cuts the risk of blockages

Pumping through long hose lines and the use of "difficult" concrete increases the risk of blockages. By regulating the pressure to a user-set value below the pump's maximum of 78 bar, the standard pump controller EPS (Ergonic® Pump System) reduces the risk of blockages. As soon as the concrete pressure in the delivery line approaches the defined limit value, the EPS reduces the delivery rate by means of a special control circuit. Rather than impending blockages being accelerated through an increase in pressure, the EPS effectively cuts the likelihood of a blockage by reducing the delivery flow to achieve the ideal balance between delivery rate and delivery pressure.

Flow rate metering for precision low-volume placement

For smaller delivery volumes, the maximum delivery rate can be reduced with the EGD (Ergonic® Graphic Display). At a reduction from 100 to 50 percent, for example, the full range of the remote control's rotary knob regulates the concrete flow from 0 to 50 percent of the pump's nominal delivery rate.

Remote control with display for optimal communication between operator and pump

The radio remote control with its built-in LCD display simplifies work wherever the pump operator works at a distance from the pump – a common situation in renovation work. The display provides feedback about machine status – such as delivery rate and pressure – and other data and allows the adjustment of certain parameter directly via the remote control. The radio signal's strength and battery charge status are also indicated.



Putzmeister Concrete Pumps GmbH

Max-Eyth-Straße 10 · 72631 Aichtal / Germany
P.O.Box 2152 · 72629 Aichtal / Germany
Tel. +49 (7127) 599-0 · Fax +49 (7127) 599-520
pmw@putzmeister.com · www.putzmeister.com



Putzmeister Concrete Pumps GmbH | P.O. Box 2152 | 72629 Aichtal | Tel. +98 224 286 75-8 | Fax +98 224 228 78 | +98 0912 8 584 584 kormit.abedi@yahoo.com Right to make amendments reserved | © by Putzmeister | All rights reserved | Printed in Germany | 1707
www.saghargar-co.ir